

Product datasheet

Recombinant Mouse Mast Cell Tryptase protein (His tag) ab236929

3 Images

Description

Product name	Recombinant Mouse Mast Cell Tryptase protein (His tag)		
Purity	> 90 % SDS-PAGE.		
Expression system	Escherichia coli		
Accession	<u>Q02844</u>		
Protein length	Protein fragment		
Animal free	No		
Nature	Recombinant		
Species	Mouse		
Sequence	AHGNKWPWQVSLRANDTYWMHFCGGSLIHPQWVLTAAH CVGPDVADPNKV RVQLRKQYLYHDHLMTVSQIITHPDFYVQDGADIALKLTN PVNISDY VHPVPLPPASETFPSGTLCWVTGWGNIDNGVNLPPPFPL KEVQVPIIENH LCDLKYHKGLITGDNVHMRDDMLCAGNEGHDSCQGDSG GPLVCKVEDTW LQAGVVSWECAQPNRPGIYTRVTYYLDWIHH		
Predicted molecular weight	30 kDa including tags		
Amino acids	35 to 267		
Tags	His tag N-Terminus		
Additional sequence information	N-terminal 6xHis-tagged.		

Specifications

Our Abpromise guarantee covers the use of ab236929 in the following tested applications.	
The application notes include recommended starting dilutions; optimal dilutions/concentrations should be determined by the end user.	
Applications	SDS-PAGE Mass Spectrometry
Mass spectrometry	LC-MS/MS

Form

Liquid

Preparation and Storage

Stability and Storage

Shipped at 4°C. Store at +4°C. Avoid freeze / thaw cycle.
pH: 7.2
Constituents: Tris buffer, 50% Glycerol (glycerin, glycerine)

General Info

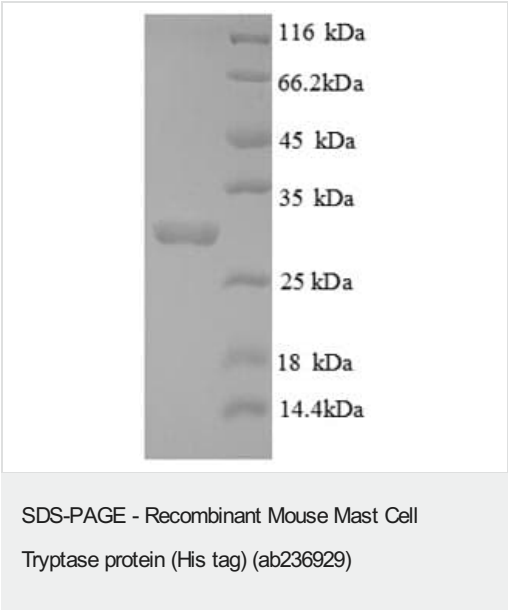
Relevance

Mast cells contain a number of preformed chemical mediators such as histamine, chymase, carboxypeptidase and proteolytic tryptase. Human Mast Cell Tryptase is considered to be an important marker of mast cell activation as well as an important mediator of inflammation.

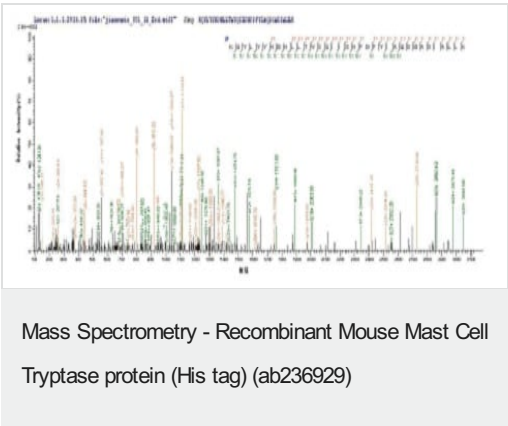
Cellular localization

Secreted. Note: released from the secretory granules upon mast cell activation.

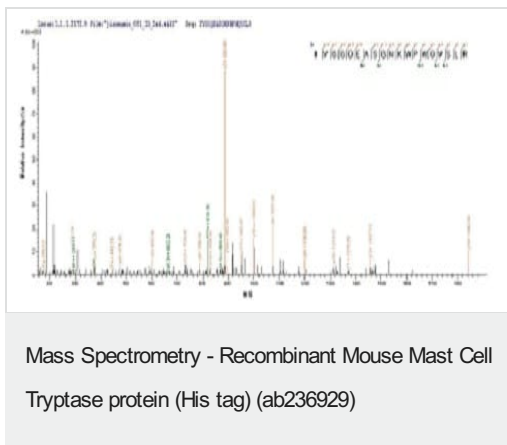
Images



(Tris-Glycine gel) Discontinuous SDS-PAGE (reduced) analysis with 5% enrichment gel and 15% separation gel of ab236929.



Based on the SEQUEST from database of E.coli host and target protein, the LC-MS/MS Analysis result of ab236929 could indicate that this peptide derived from E.coli-expressed *Mus musculus* (Mouse) Mast Cell Tryptase.



Based on the SEQUEST from database of E.coli host and target protein, the LC-MS/MS Analysis result of ab236929 could indicate that this peptide derived from E.coli-expressed *Mus musculus* (Mouse) Mast Cell Tryptase.

Please note: All products are "FOR RESEARCH USE ONLY. NOT FOR USE IN DIAGNOSTIC PROCEDURES"

Our Abpromise to you: Quality guaranteed and expert technical support

- Replacement or refund for products not performing as stated on the datasheet
- Valid for 12 months from date of delivery
- Response to your inquiry within 24 hours
- We provide support in Chinese, English, French, German, Japanese and Spanish
- Extensive multi-media technical resources to help you
- We investigate all quality concerns to ensure our products perform to the highest standards

If the product does not perform as described on this datasheet, we will offer a refund or replacement. For full details of the Abpromise, please visit <https://www.abcam.com/abpromise> or contact our technical team.

Terms and conditions

- Guarantee only valid for products bought direct from Abcam or one of our authorized distributors