

## Product datasheet

# Recombinant mouse PD-L1 protein (Fc Chimera) ab216192

[2 Images](#)

### Description

---

<b>Product name</b>	Recombinant mouse PD-L1 protein (Fc Chimera)
<b>Purity</b>	> 90 % SDS-PAGE.
<b>Expression system</b>	HEK 293 cells
<b>Accession</b>	<b><u>Q9EP73</u></b>
<b>Protein length</b>	Protein fragment
<b>Animal free</b>	No
<b>Nature</b>	Recombinant
<b>Species</b>	Mouse
<b>Sequence</b>	FT ITAPKDLVYV EYGSNVTMEC RFPVERELDL LALVYWEKE DEQVIQFVAG EEDLKPQHSN FRGRASLPKD QLLKGNAALQ ITDVKLQDAG VYCCIISYGG ADYKRITLKV NAPYRKINQR ISVDPATSEH ELICQAEGYP EAEVWMTNSD HQPVSGKRSV TTSRTEGMLL NVTSSLRVNA TANDVFYCTF WRSQPGQNHT AELIPELPA THPPQNRT
<b>Predicted molecular weight</b>	52 kDa including tags
<b>Amino acids</b>	19 to 238
<b>Additional sequence information</b>	Extracellular domain fused at the C-terminus to the Fc portion of mouse IgG2a.

### Specifications

---

Our **Abpromise guarantee** covers the use of **ab216192** in the following tested applications.

The application notes include recommended starting dilutions; optimal dilutions/concentrations should be determined by the end user.

<b>Applications</b>	SDS-PAGE
<b>Form</b>	Liquid
<b>Additional notes</b>	Useful for the study of protein-protein interaction and <i>in vitro</i> and <i>in vivo</i> protein function studies. Storing diluted protein is not recommended, if necessary, use carrier protein (BSA 0.1 – 0.5%).

## Preparation and Storage

### Stability and Storage

Shipped at 4°C. Store at -80°C. Avoid freeze / thaw cycle.

pH: 7.40

Constituents: 20% Glycerol (glycerin, glycerine), 0.02% Potassium chloride, 0.64% Sodium chloride, Phosphate Buffer

This product is an active protein and may elicit a biological response in vivo, handle with caution.

## General Info

### Function

Involved in the costimulatory signal, essential for T-cell proliferation and production of IL10 and IFNG, in an IL2-dependent and a PDCD1-independent manner. Interaction with PDCD1 inhibits T-cell proliferation and cytokine production.

### Tissue specificity

Highly expressed in the heart, skeletal muscle, placenta and lung. Weakly expressed in the thymus, spleen, kidney and liver. Expressed on activated T- and B-cells, dendritic cells, keratinocytes and monocytes.

### Sequence similarities

Belongs to the immunoglobulin superfamily. BTN/MOG family.

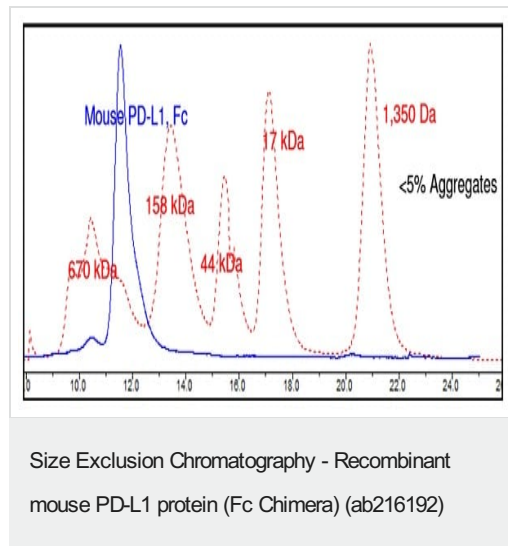
Contains 1 Ig-like C2-type (immunoglobulin-like) domain.

Contains 1 Ig-like V-type (immunoglobulin-like) domain.

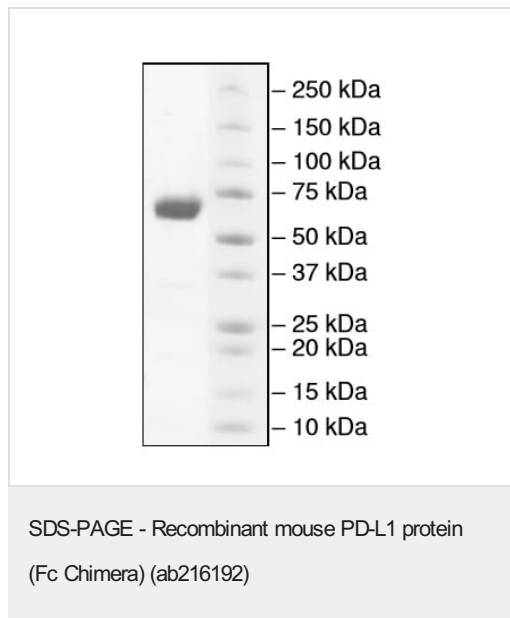
### Cellular localization

Cell membrane and Endomembrane system.

## Images



Gel Filtration Curve.



4-20% SDS-PAGE Coomassie staining:

3 µg ab216192.

**Please note:** All products are "FOR RESEARCH USE ONLY. NOT FOR USE IN DIAGNOSTIC PROCEDURES"

### Our Abpromise to you: Quality guaranteed and expert technical support

---

- Replacement or refund for products not performing as stated on the datasheet
- Valid for 12 months from date of delivery
- Response to your inquiry within 24 hours
- We provide support in Chinese, English, French, German, Japanese and Spanish
- Extensive multi-media technical resources to help you
- We investigate all quality concerns to ensure our products perform to the highest standards

If the product does not perform as described on this datasheet, we will offer a refund or replacement. For full details of the Abpromise, please visit <https://www.abcam.com/abpromise> or contact our technical team.

### Terms and conditions

---

- Guarantee only valid for products bought direct from Abcam or one of our authorized distributors