

Recombinant mouse PD-L1 protein (Fc Chimera Active) ab221310

[3 Images](#)

Description

Product name	Recombinant mouse PD-L1 protein (Fc Chimera Active)	
Biological activity	<p>Measured by its binding ability in a functional ELISA. Immobilized ab221310 at 5 µg/mL (100 µL/well) can bind Recombinant mouse PD1 protein (Active) (Biotin) (ab246151) with a linear range of 0.313-5 µg/mL.</p> <p>Measured by its binding ability in a functional ELISA. Immobilized Recombinant Mouse CD80 protein (Fc Chimera) (ab207101) at 5 µg/mL (100 µL/well) can bind ab221310 with a linear range of 0.16-2.5 µg/mL.</p>	
Purity	> 95 % SDS-PAGE.	
Endotoxin level	< 1.000 Eu/µg	
Expression system	HEK 293 cells	
Accession	Q9EP73	
Protein length	Protein fragment	
Animal free	No	
Nature	Recombinant	
Species	Mouse	
Sequence	<pre>FT ITAPKDLVWV EYGSNVTMEC RFPVERELDL LALVVYWEKE DEQVIQFVAG EEDLKPQHSN FRGRASLPKD QLLKGNAALQ ITDVKLQDAG VYCCIISYGG ADYKRITLKV NAPYRKINQR ISVDPATSEH ELICQAEQYP EAEVIWTNSD HQPVSGKRSV TTSRTEGMLL NVTSSLRVNA TANDVFYCTF WRSQPGQNHT AELIPELPA THPPQNR</pre>	
Predicted molecular weight	52 kDa including tags	
Amino acids	19 to 238	
Tags	Fc tag C-Terminus	
Additional sequence information	This protein carries a mouse IgG2a Fc tag (Glu 98-Lys 330; P01863) at the C-terminus. (NP_068693).	

Specifications

Our **Abpromise guarantee** covers the use of **ab221310** in the following tested applications.

The application notes include recommended starting dilutions; optimal dilutions/concentrations should be determined by the end user.

Applications	SDS-PAGE ELISA
Form	Lyophilized
Additional notes	This product is stable after storage at: -20 °C to -70 °C for 12 months in lyophilized state; -70 °C for 3 months under sterile conditions after reconstitution.

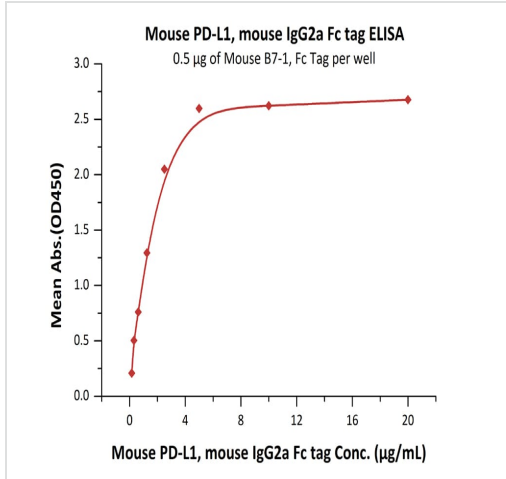
Preparation and Storage

Stability and Storage	Shipped at 4°C. Upon delivery aliquot. Store at -20°C or -80°C. Avoid freeze / thaw cycle. Please see notes section. pH: 7.40 Constituents: 95% PBS, 5% Trehalose Lyophilized from 0.22 µm filtered solution. This product is an active protein and may elicit a biological response in vivo, handle with caution.
Reconstitution	Reconstitute with sterile deionized water to a concentration of 400 µg/ml.

General Info

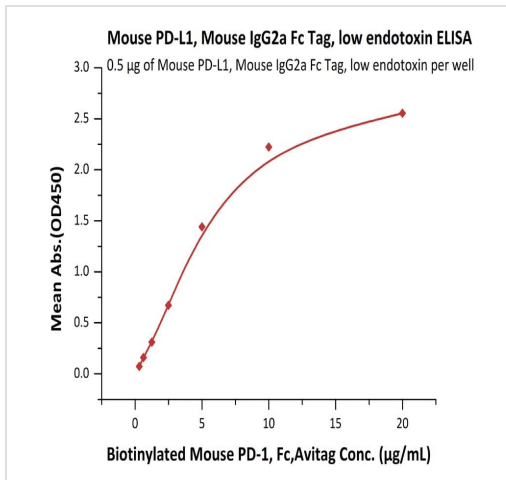
Function	Involved in the costimulatory signal, essential for T-cell proliferation and production of IL10 and IFNG, in an IL2-dependent and a PDCD1-independent manner. Interaction with PDCD1 inhibits T-cell proliferation and cytokine production.
Tissue specificity	Highly expressed in the heart, skeletal muscle, placenta and lung. Weakly expressed in the thymus, spleen, kidney and liver. Expressed on activated T- and B-cells, dendritic cells, keratinocytes and monocytes.
Sequence similarities	Belongs to the immunoglobulin superfamily. BTN/MOG family. Contains 1 Ig-like C2-type (immunoglobulin-like) domain. Contains 1 Ig-like V-type (immunoglobulin-like) domain.
Cellular localization	Cell membrane and Endomembrane system.

Images



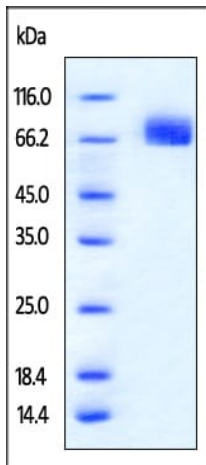
ELISA - Recombinant Mouse PD-L1 protein (Fc Chimera) (ab221310)

Immobilized Recombinant Mouse CD80 protein (Fc Chimera) (**ab207101**) at 5 µg/mL (100 µL/well) can bind ab221310 with a linear range of 0.16-2.5 µg/mL.



ELISA - Recombinant Mouse PD-L1 protein (Fc Chimera) (ab221310)

Immobilized ab221310 at 5 µg/mL (100 µL/well) can bind Recombinant mouse PD1 protein (Active) (Biotin) (**ab246151**) with a linear range of 0.313-5 µg/mL.



SDS-PAGE - Recombinant Mouse PD-L1 protein
(Fc Chimera) (ab221310)

SDS-PAGE analysis of reduced ab221310 stained overnight with Coomassie Blue.

The protein migrates as 65-85 kDa on a SDS-PAGE gel under reducing conditions due to glycosylation.

Please note: All products are "FOR RESEARCH USE ONLY. NOT FOR USE IN DIAGNOSTIC PROCEDURES"

Our Abpromise to you: Quality guaranteed and expert technical support

- Replacement or refund for products not performing as stated on the datasheet
- Valid for 12 months from date of delivery
- Response to your inquiry within 24 hours
- We provide support in Chinese, English, French, German, Japanese and Spanish
- Extensive multi-media technical resources to help you
- We investigate all quality concerns to ensure our products perform to the highest standards

If the product does not perform as described on this datasheet, we will offer a refund or replacement. For full details of the Abpromise, please visit <https://www.abcam.com/abpromise> or contact our technical team.

Terms and conditions

- Guarantee only valid for products bought direct from Abcam or one of our authorized distributors