

## Product datasheet

# Recombinant Mouse PD-L1 protein (Fc Chimera) (Biotin) ab216261

[2 References](#) [2 Images](#)

### Description

<b>Product name</b>	Recombinant Mouse PD-L1 protein (Fc Chimera) (Biotin)
<b>Purity</b>	> 90 % SDS-PAGE. >90% purity as measured by gel filtration.
<b>Expression system</b>	HEK 293 cells
<b>Accession</b>	<b><u>Q9EP73</u></b>
<b>Protein length</b>	Protein fragment
<b>Animal free</b>	No
<b>Nature</b>	Recombinant
<b>Species</b>	Mouse
<b>Sequence</b>	AFTITAPKDLVVEYGSNVTMECRFPVERELDLLALVYVW EKEDEQVIQF VAGEEDLKPQHSNFRGRASLPKDQLLKGNAAALQITDVKL QDAGVYCCIIIS YGGADYKRITLKVNPYRKINQRISVDPATSEHELICQAEGY PEAEVIWT NSDHQPVSGKRSVTTSRTEGMLLNVTSSLRVNATANDVF YCTFWRSQPGQ NHTAELIPELPATHPPQNRT
<b>Predicted molecular weight</b>	54 kDa including tags
<b>Amino acids</b>	18 to 238
<b>Tags</b>	Avi tag C-Terminus
<b>Additional sequence information</b>	Fused at the C-terminus to the Fc portion of mouse IgG2a (NM_021893). Biotinylated using AviTag technology.
<b>Conjugation</b>	Biotin

### Specifications

Our **Abpromise guarantee** covers the use of **ab216261** in the following tested applications.

The application notes include recommended starting dilutions; optimal dilutions/concentrations should be determined by the end user.

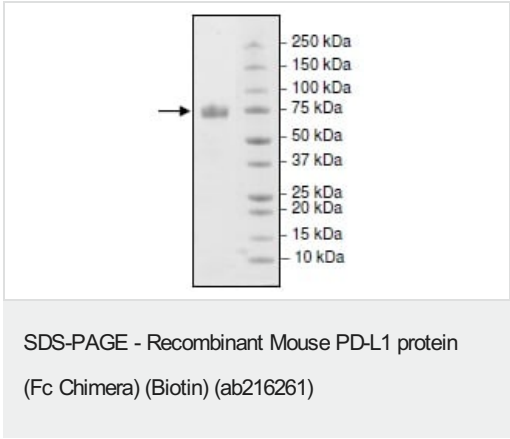
**Applications** SDS-PAGE

**Form** Liquid

Preparation and Storage

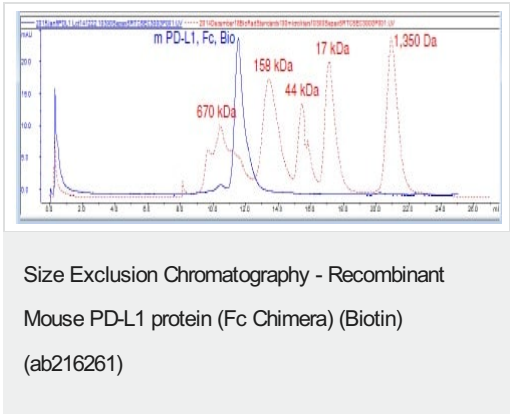
Stability and Storage	<p>Shipped at 4°C. Upon delivery aliquot. Store at -80°C. Avoid freeze / thaw cycle.</p> <p>pH: 7.40</p> <p>Constituents: 0.64% Sodium chloride, 0.02% Potassium chloride, 20% Glycerol (glycerin, glycerine), 79% Phosphate Buffer</p>
General Info	
Function	<p>Involved in the costimulatory signal, essential for T-cell proliferation and production of IL10 and IFNG, in an IL2-dependent and a PD1-independent manner. Interaction with PD1 inhibits T-cell proliferation and cytokine production.</p>
Tissue specificity	<p>Highly expressed in the heart, skeletal muscle, placenta and lung. Weakly expressed in the thymus, spleen, kidney and liver. Expressed on activated T- and B-cells, dendritic cells, keratinocytes and monocytes.</p>
Sequence similarities	<p>Belongs to the immunoglobulin superfamily. BTN/MOG family.</p> <p>Contains 1 Ig-like C2-type (immunoglobulin-like) domain.</p> <p>Contains 1 Ig-like V-type (immunoglobulin-like) domain.</p>
Cellular localization	<p>Cell membrane and Endomembrane system.</p>

Images



4-20% SDS-PAGE analysis of 3 µg ab216261.

This protein runs at an apparent higher molecular weight due to glycosylation.



Gel filtration curve of ab216261.

**Please note:** All products are "FOR RESEARCH USE ONLY. NOT FOR USE IN DIAGNOSTIC PROCEDURES"

### **Our Abpromise to you: Quality guaranteed and expert technical support**

---

- Replacement or refund for products not performing as stated on the datasheet
- Valid for 12 months from date of delivery
- Response to your inquiry within 24 hours
  
- We provide support in Chinese, English, French, German, Japanese and Spanish
- Extensive multi-media technical resources to help you
- We investigate all quality concerns to ensure our products perform to the highest standards

If the product does not perform as described on this datasheet, we will offer a refund or replacement. For full details of the Abpromise, please visit <https://www.abcam.com/abpromise> or contact our technical team.

### **Terms and conditions**

---

- Guarantee only valid for products bought direct from Abcam or one of our authorized distributors