

Recombinant mouse PD1 protein (Active) ab180051

[1 References](#) [2 Images](#)

Description

Product name	Recombinant mouse PD1 protein (Active)
Biological activity	Loaded mouse PD-L1, Fc Tag on Protein A Biosensor, can bind ab180051 with an affinity constant of 6.9 μ M as determined in BLI assay.
Purity	> 90 % SDS-PAGE.
Endotoxin level	< 1.000 Eu/ μ g
Expression system	HEK 293 cells
Accession	<u>Q02242</u>
Protein length	Protein fragment
Animal free	No
Nature	Recombinant
Species	Mouse
Sequence	LEVPNGPWRS LTFYPAWLTV SEGANATFTC SLSNWSIEDLM LNNWRLSPSN QTEKQAAFCN GLSQPVQDAR FQIQLPNRH DFHMNILDTR RNDSGIYLCG AISLHPKAKI EESPGAELVV TERILETSTR YPSPSPKPEG RFQ
Predicted molecular weight	17 kDa including tags
Amino acids	25 to 167
Tags	His tag C-Terminus
Additional sequence information	(NP_032824)

Specifications

Our **Abpromise guarantee** covers the use of **ab180051** in the following tested applications.

The application notes include recommended starting dilutions; optimal dilutions/concentrations should be determined by the end user.

Applications	Functional Studies SDS-PAGE
Form	Lyophilized
Additional notes	Endotoxin Levels determined by LAL method.

Preparation and Storage

Stability and Storage

Shipped at 4°C. Store at 4°C (stable for up to 12 months). Store at -20°C or -80°C. Avoid freeze / thaw cycle. For long term storage it is recommended to add a carrier protein on reconstitution (0.1% HSA or BSA).

pH: 7.40

Constituents: 95% PBS, 5% Trehalose

Lyophilized from 0.22 µm filtered solution.

This product is an active protein and may elicit a biological response in vivo, handle with caution.

Reconstitution

Reconstitute with sterile deionized water to a concentration of 400 µg/ml.

General Info

Function

Possible cell death inducer, in association with other factors.

Involvement in disease

Genetic variation in PDCD1 is associated with susceptibility to systemic lupus erythematosus type 2 (SLEB2) [MIM:605218]. Systemic lupus erythematosus is a chronic, inflammatory and often febrile multisystemic disorder of connective tissue. It affects principally the skin, joints, kidneys and serosal membranes. It is thought to represent a failure of the regulatory mechanisms of the autoimmune system.

Sequence similarities

Contains 1 Ig-like V-type (immunoglobulin-like) domain.

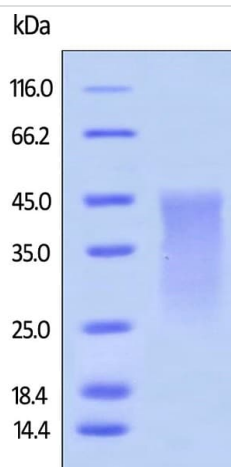
Developmental stage

Induced at programmed cell death.

Cellular localization

Membrane.

Images

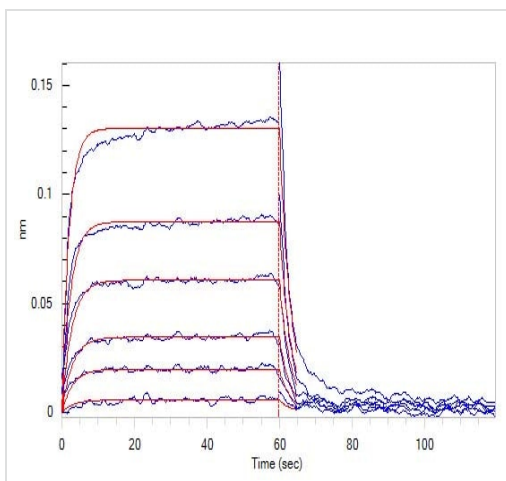


SDS-PAGE - Recombinant mouse PD1 protein
(ab180051)

Reduced ab180051 on SDS-PAGE, stained overnight with Coomassie Blue.

The protein migrates as 25-45 kDa under reducing condition due to glycosylation.

Purity of protein >90%.



Biological Activity - Recombinant mouse PD1
protein (Active) (ab180051)

Loaded Mouse PD-L1, Fc Tag on Protein A Biosensor, can bind Mouse PD-1, His Tag (ab180051) with an affinity constant of 6.9 μM as determined in BLI assay (ForteBio Octet Red96e) (Routinely tested).

Please note: All products are "FOR RESEARCH USE ONLY. NOT FOR USE IN DIAGNOSTIC PROCEDURES"

Our Abpromise to you: Quality guaranteed and expert technical support

- Replacement or refund for products not performing as stated on the datasheet
- Valid for 12 months from date of delivery
- Response to your inquiry within 24 hours
- We provide support in Chinese, English, French, German, Japanese and Spanish
- Extensive multi-media technical resources to help you
- We investigate all quality concerns to ensure our products perform to the highest standards

If the product does not perform as described on this datasheet, we will offer a refund or replacement. For full details of the Abpromise, please visit <https://www.abcam.com/abpromise> or contact our technical team.

Terms and conditions

- Guarantee only valid for products bought direct from Abcam or one of our authorized distributors