

Product datasheet

Recombinant Mouse Peroxiredoxin 6 protein ab195174

[1 References](#) [3 Images](#)

Description

Product name	Recombinant Mouse Peroxiredoxin 6 protein
Purity	> 99 % SDS-PAGE.
Expression system	Escherichia coli
Accession	<u>O08709</u>
Protein length	Full length protein
Animal free	No
Nature	Recombinant
Species	Mouse
Sequence	HHHHHHGSGGSGPGGLLLGDEAPNFEANTTIGRIRFHDFL GDSWGILFSH PRDF TPVCTTELGRAAKLAPEFAKRNVKLIASIDSVEDHLAWS KDIN AYNGETPTEKLPF PIIDDKGRDLAILLGMLDPVEKDDNNMPVTARVVF IFGPDKKLKLKSILYPATTGRNF DEILRVVDSLQLTGTKPVATPVDWKK GESVMVVPTLSEEEAKQCFCPKGVFTKELPS GKKYLRYPQP
Predicted molecular weight	26 kDa including tags
Amino acids	2 to 224
Tags	His tag N-Terminus

Specifications

Our **Abpromise guarantee** covers the use of **ab195174** in the following tested applications.

The application notes include recommended starting dilutions; optimal dilutions/concentrations should be determined by the end user.

Applications	SDS-PAGE Sandwich ELISA
Form	Liquid
Additional notes	Product was previously marketed under the MitoSciences sub-brand.

Preparation and Storage

Stability and Storage

Shipped on Dry Ice. Store at -80°C. Avoid freeze / thaw cycle.

pH: 7.5

Constituents: 0.2% Monobasic dihydrogen potassium phosphate, 2.16% Sodium phosphate dibasic heptahydrate, 0.2% Potassium chloride, 8.06% Sodium chloride, 10% Trehalose

General Info

Function

Involved in redox regulation of the cell. Can reduce H_2O_2 and short chain organic, fatty acid, and phospholipid hydroperoxides. May play a role in the regulation of phospholipid turnover as well as in protection against oxidative injury.

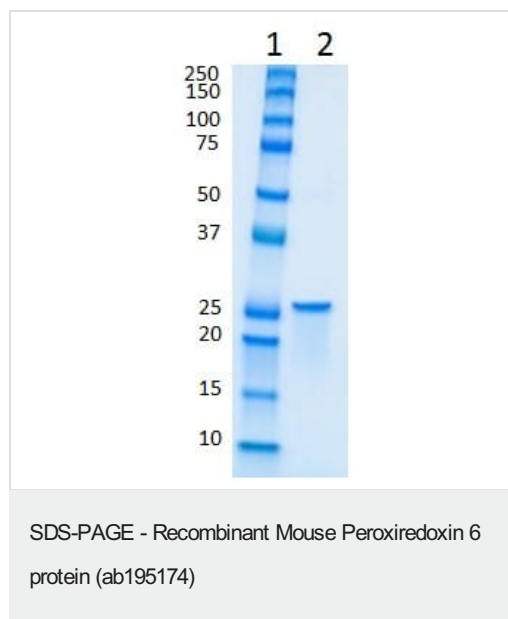
Sequence similarities

Belongs to the ahpC/TSA family. Rehydrin subfamily.
Contains 1 thioredoxin domain.

Cellular localization

Cytoplasm. Lysosome. Cytoplasmic vesicle. Also found in lung secretory organelles.

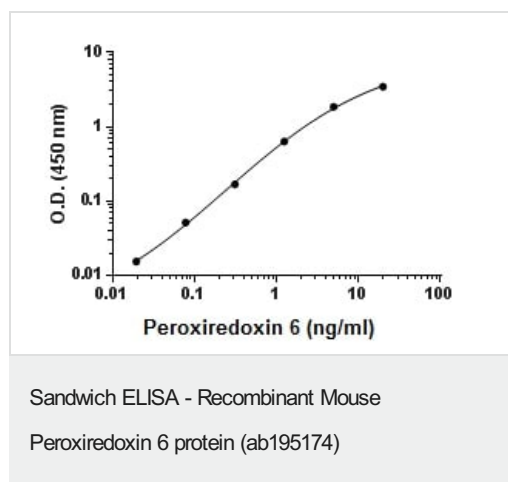
Images



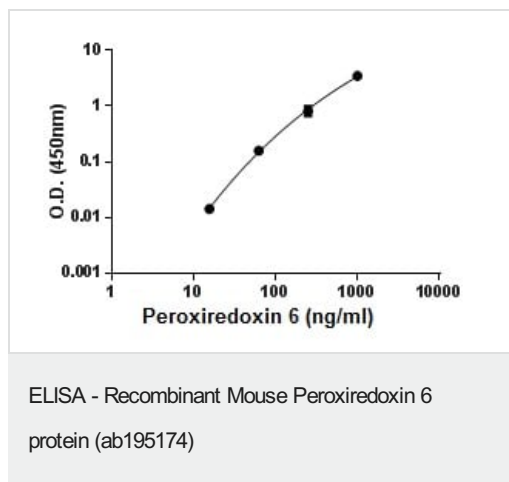
SDS PAGE gel stained with colloidal coomassie blue

Lane 1: Ladder

Lane 2: ab195174, 500ng



Example of data generated using ab195174 in a sandwich ELISA.



Example of data generated using ab195174 in a direct ELISA.

Please note: All products are "FOR RESEARCH USE ONLY. NOT FOR USE IN DIAGNOSTIC PROCEDURES"

Our Abpromise to you: Quality guaranteed and expert technical support

- Replacement or refund for products not performing as stated on the datasheet
- Valid for 12 months from date of delivery
- Response to your inquiry within 24 hours
- We provide support in Chinese, English, French, German, Japanese and Spanish
- Extensive multi-media technical resources to help you
- We investigate all quality concerns to ensure our products perform to the highest standards

If the product does not perform as described on this datasheet, we will offer a refund or replacement. For full details of the Abpromise, please visit <https://www.abcam.com/abpromise> or contact our technical team.

Terms and conditions

- Guarantee only valid for products bought direct from Abcam or one of our authorized distributors