

Product datasheet

Recombinant mouse Prolactin/PRL protein (Active) ab243239

[1 Image](#)

Description

| | | |
|--|--|--|
| Product name | Recombinant mouse Prolactin/PRL protein (Active) | |
| Biological activity | Fully biologically active when compared to standard. The ED50 as determined by its ability to induce cAMP accumulation in murine MC3T3E1 cells is less than 50 ng/ml, corresponding to a specific activity of $> 2.0 \times 10^4$ IU/mg. | |
| Purity | > 98 % SDS-PAGE. $>98\%$ as determined by SDS-PAGE and HPLC. | |
| Endotoxin level | < 1.000 Eu/ μ g | |
| Expression system | Escherichia coli | |
| Accession | <u>P06879</u> | |
| Protein length | Full length protein | |
| Animal free | No | |
| Nature | Recombinant | |
| Species | Mouse | |
| Sequence | LPICSAGDCQTSRLRELFDRVVILSHYIHTLYTDMFIEFDKQY VQDREFMV KVINDCPTSSLATPEDKEQALKVPPEVLLNLILSLVQSSSD PLFQLITGV GGQEAPEYILSRAKEIEEQNKQLLEGVEKIISQAYPEAKGN GMYFVWSQ LPSLQGVDEESKILSLRNTIRCLRRDSHKVDNFLKVLRCQI AHQNNC | |
| Predicted molecular weight | 22 kDa | |
| Amino acids | 30 to 226 | |
| Additional sequence information | Full-length mature chain lacking the signal peptide. | |

Specifications

Our **Abpromise guarantee** covers the use of **ab243239** in the following tested applications.

The application notes include recommended starting dilutions; optimal dilutions/concentrations should be determined by the end user.

Applications HPLC

SDS-PAGE
Functional Studies

Form Lyophilized

Preparation and Storage

Stability and Storage Shipped at 4°C. Store at -20°C or -80°C. Avoid freeze / thaw cycle.

Constituent: PBS

0.2 µm filtered

This product is an active protein and may elicit a biological response in vivo, handle with caution.

Reconstitution

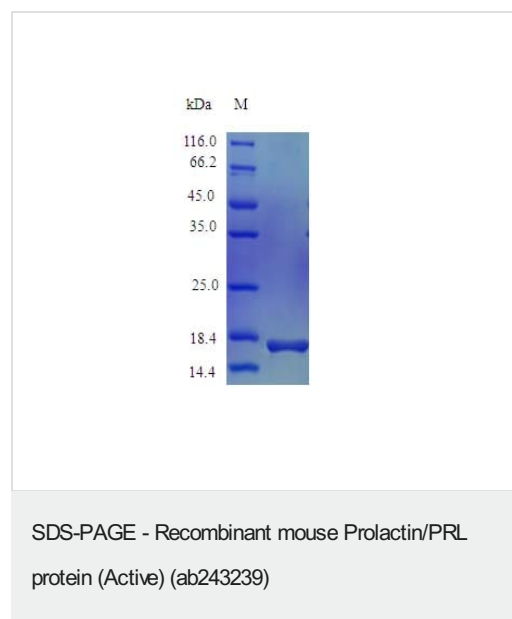
Briefly centrifuge prior to opening to bring the contents to the bottom. Reconstitute in sterile distilled water or aqueous buffer containing 0.1 % BSA to a concentration of 0.1-1.0 mg/mL. Stock solutions should be apportioned into working aliquots and stored at -20 °C or below. Further dilutions should be made in appropriate buffered solutions.

General Info

Relevance Various hormones are secreted from the anterior pituitary during development and growth. Prolactin is a growth factor secreted by the anterior pituitary that is necessary for the proliferation and differentiation of the mammary glands.

Cellular localization Secreted

Images



SDS Page analysis of ab243239

Please note: All products are "FOR RESEARCH USE ONLY. NOT FOR USE IN DIAGNOSTIC PROCEDURES"

Our Abpromise to you: Quality guaranteed and expert technical support

- Replacement or refund for products not performing as stated on the datasheet
- Valid for 12 months from date of delivery
- Response to your inquiry within 24 hours

- We provide support in Chinese, English, French, German, Japanese and Spanish
- Extensive multi-media technical resources to help you
- We investigate all quality concerns to ensure our products perform to the highest standards

If the product does not perform as described on this datasheet, we will offer a refund or replacement. For full details of the Abpromise, please visit <https://www.abcam.com/abpromise> or contact our technical team.

Terms and conditions

- Guarantee only valid for products bought direct from Abcam or one of our authorized distributors