

Product datasheet

Recombinant mouse SCF protein (Active) ab259390

[4 Images](#)

Description

Product name	Recombinant mouse SCF protein (Active)
Biological activity	Fully biologically active when compared to standard. ED ₅₀ is ≤ 2.223 ng /ml, corresponding to a specific activity of 4.50 x 10 ⁵ units/mg.
Purity	≥ 95 % SDS-PAGE. Purity by HPLC ≥ 95%.
Endotoxin level	≤ 0.005 Eu/μg
Expression system	HEK 293 cells
Accession	<u>P20826</u>
Protein length	Protein fragment
Animal free	Yes
Carrier free	Yes
Nature	Recombinant
Species	Mouse
Sequence	KEICGNPVTD NVKDITKLVA NLPNDYMITL NYVAGMDVLP SHCWLRDMVIQLSLSLTLL DKFSNISEGL SNYSIIDKLG KMDDLVLCEENAPKNIKE SPKRPETRSF TPEEFFSIFN RSIDAFKDFM VASDTSDCVL SSTLGPEKDS RVSVTKPFML PPV
Predicted molecular weight	18 kDa
Molecular weight information	M+0.49 Da (calc MW 18284.51) (+569 Da: Hex(1)HexNAc(2))
Amino acids	26 to 188
Additional sequence information	N-terminal glycine

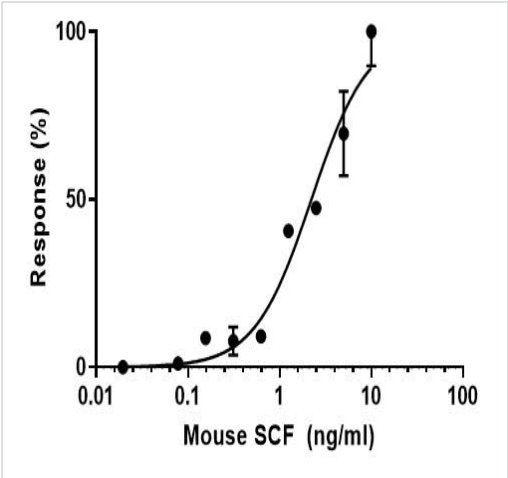
Specifications

Our **Abpromise guarantee** covers the use of **ab259390** in the following tested applications.

The application notes include recommended starting dilutions; optimal dilutions/concentrations should be determined by the end user.

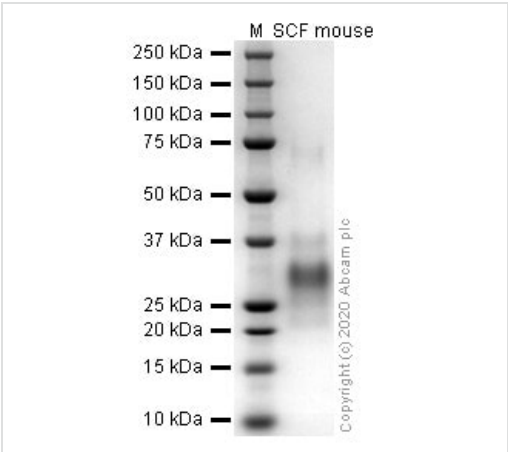
Applications	Functional Studies
	Mass Spectrometry
	HPLC

	SDS-PAGE
	Cell Culture
Form	Lyophilized
Additional notes	This protein is filter sterilised prior to aliquoting and lyophilisation. All aliquoting and lyophilisation steps are performed in a sterile environment
Preparation and Storage	
Stability and Storage	<p>Shipped at Room Temperature. Store at Room Temperature.</p> <p>pH: 6.00</p> <p>Constituents: 0.727% Dibasic monohydrogen potassium phosphate, 0.248% Monobasic dihydrogen potassium phosphate, 10.26% Trehalose</p> <p>Buffer reconstituted from</p> <p>This product is an active protein and may elicit a biological response in vivo, handle with caution.</p>
Reconstitution	Reconstitute in PBS, aliquot and store at -80 C for 12 months or 4 C for 1 week. Avoid repeated freeze thaw. Lyophilized contents may appear as either a translucent film or a white powder. This variance does not affect the quality of the product.
General Info	
Function	Ligand for the receptor-type protein-tyrosine kinase KIT. Plays an essential role in the regulation of cell survival and proliferation, hematopoiesis, stem cell maintenance, gametogenesis, mast cell development, migration and function, and in melanogenesis. KITLG/SCF binding can activate several signaling pathways. Promotes phosphorylation of PIK3R1, the regulatory subunit of phosphatidylinositol 3-kinase, and subsequent activation of the kinase AKT1. KITLG/SCF and KIT also transmit signals via GRB2 and activation of RAS, RAF1 and the MAP kinases MAPK1/ERK2 and/or MAPK3/ERK1. KITLG/SCF and KIT promote activation of STAT family members STAT1, STAT3 and STAT5. KITLG/SCF and KIT promote activation of PLCG1, leading to the production of the cellular signaling molecules diacylglycerol and inositol 1,4,5-trisphosphate. KITLG/SCF acts synergistically with other cytokines, probably interleukins.
Involvement in disease	Hyperpigmentation with or without hypopigmentation, familial progressive Deafness, congenital, unilateral or asymmetric
Sequence similarities	Belongs to the SCF family.
Developmental stage	Acts in the early stages of hematopoiesis.
Post-translational modifications	<p>A soluble form (sKITLG) is produced by proteolytic processing of isoform 1 in the extracellular domain.</p> <p>Found in two differentially glycosylated forms, LMW-SCF and HMW-SCF. LMW-SCF is fully N-glycosylated at Asn-145, partially N-glycosylated at Asn-90, O-glycosylated at Ser-167, Thr-168 and Thr-180, and not glycosylated at Asn-97 or Asn-118. HMW-SCF is N-glycosylated at Asn-118, Asn-90 and Asn-145, O-glycosylated at Ser-167, Thr-168 and Thr-180, and not glycosylated at Asn-97.</p> <p>A soluble form exists as a cleavage product of the extracellular domain.</p>
Cellular localization	Secreted; Cell membrane and Cytoplasm. Cytoplasm, cytoskeleton. Cell membrane. Cell projection, lamellipodium. Cell projection, filopodium.



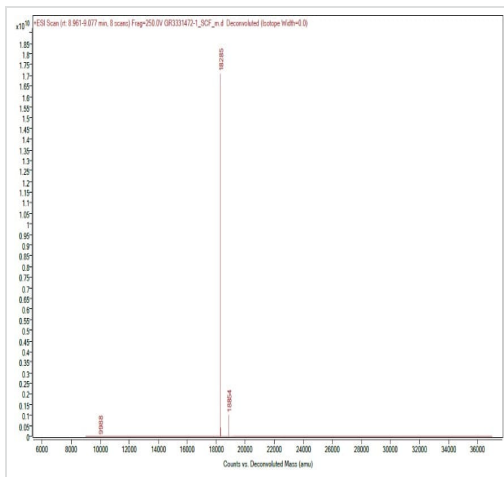
Functional Studies - Recombinant mouse SCF protein (Active) (ab259390)

Fully biologically active when compared to standard. Determined by dose-dependant stimulation of human TF-1 cells. ED₅₀ is ≤ 2.223 ng /ml, corresponding to a specific activity of 4.50×10^5 units/mg.



SDS-PAGE - Recombinant mouse SCF protein (Active) (ab259390)

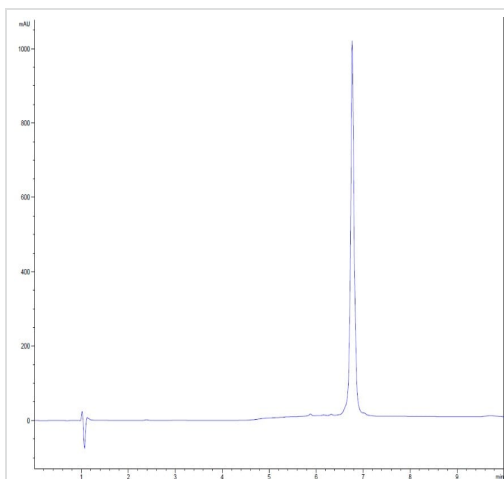
SDS-PAGE analysis of ab259390.



Mass Cytometry - Recombinant mouse SCF protein
(Active) (ab259390)

M + 0.49 Da (calc mass 18284.51) (+569 Da: Hex(1)HexNAc(2))

The spectrum was recorded with a 6545XT AdvanceBio LC/Q-TOF (Agilent Technologies) and a MabPac RP column (42.1x50 mm, 4 μ m, Thermo Scientific). 5 μ L of purified protein was injected and the gradient run from 85 % water:FA (99.9:0.1 v/v) and 15 % acetonitrile:FA (90:9.9:0.1 v/v/v) to 55 % water:FA (99.9:0.1 v/v) and 45 % acetonitrile:FA (90:9.9:0.1 v/v/v) within 3 minutes followed by an isocratic step for another 2.5 min. Flow rate was 0.4 mL/min and the column compartment temperature was 60 $^{\circ}$ C. Data was analysed and deconvoluted using the Bioconfirm software (Agilent Technologies).



HPLC - Recombinant mouse SCF protein (Active)
(ab259390)

Purity: 95%

The spectrum was recorded using a 1260 Infinity II HPLC system with DAD and a MabPac RP column (3.0x100 mm, 4 μ m). 5 μ L of purified protein was injected and the gradient run from 80 % water:TFA (99.9:0.1 v/v) and 20 % acetonitrile:water:TFA (90:9.9:0.1 v/v/v) to 20 % water:TFA (99.9:0.1 v/v) and 80 % acetonitrile:water:TFA (90:9.9:0.1 v/v/v) within 3 minutes followed by an isocratic step for another 3 min. Flow rate was 0.5 mL/min and the column compartment temperature was 50 $^{\circ}$ C.

Please note: All products are "FOR RESEARCH USE ONLY. NOT FOR USE IN DIAGNOSTIC PROCEDURES"

Our Abpromise to you: Quality guaranteed and expert technical support

- Replacement or refund for products not performing as stated on the datasheet
- Valid for 12 months from date of delivery
- Response to your inquiry within 24 hours
- We provide support in Chinese, English, French, German, Japanese and Spanish
- Extensive multi-media technical resources to help you
- We investigate all quality concerns to ensure our products perform to the highest standards

If the product does not perform as described on this datasheet, we will offer a refund or replacement. For full details of the Abpromise, please visit <https://www.abcam.com/abpromise> or contact our technical team.

Terms and conditions

- Guarantee only valid for products bought direct from Abcam or one of our authorized distributors