

Product datasheet

Recombinant pig IL-2 protein (Active) ab238302

[1 References](#) [2 Images](#)

Description

Product name	Recombinant pig IL-2 protein (Active)	
Biological activity	CTLL-2 cell proliferation ED ₅₀ ≤ 1 ng/mL (≥ 1.0 x 10 ⁶ units/mg).	
Purity	> 95 % SDS-PAGE.	
Endotoxin level	≤1.000 Eu/μg	
Expression system	Escherichia coli	
Accession	<u>P26891</u>	
Protein length	Full length protein	
Animal free	No	
Nature	Recombinant	
Species	Pig	
Sequence	MAPTSSSTKNTKKQLEPLLLDLQLLLKEVKNYENADLSRM LTFKFYMPKQ ATELKHLQCLVEELKALEGVLNLGQSKNSDSANIKESMNN INVTVLELKG SETSFKCEYDDETVTAVEFLNKWITFCQSIYSTLT	
Predicted molecular weight	15 kDa	
Amino acids	21 to 154	
Additional sequence information	Full length mature chain without signal peptide. Source: Genetically modified E.coli.	

Specifications

Our **Abpromise guarantee** covers the use of **ab238302** in the following tested applications.

The application notes include recommended starting dilutions; optimal dilutions/concentrations should be determined by the end user.

Applications	Functional Studies SDS-PAGE
Form	Lyophilized
Additional notes	12 months from date of receipt when stored at -20°C to -80°C as supplied. 1 month when stored at 4°C after reconstituting as directed. 3 months when stored at -20°C to -80°C after reconstituting as directed.

Preparation and Storage

Stability and Storage

Shipped at 4°C. Store at -20°C or -80°C. Avoid freeze / thaw cycle.

Constituent: 0.16% Sodium phosphate

Lyophilized from a sterile (0.2 micron) filtered aqueous solution

This product is an active protein and may elicit a biological response in vivo, handle with caution.

Reconstitution

Sterile water at 0.1 mg/mL. Centrifuge vial before opening. Suspend the product by gently pipetting the above recommended solution down the sides of the vial. DO NOT VORTEX. Allow several minutes for complete reconstitution. For prolonged storage, dilute to working aliquots in a 0.1% BSA solution, store at -80°C, and avoid repeat freeze thaws.

General Info

Function

Produced by T-cells in response to antigenic or mitogenic stimulation, this protein is required for T-cell proliferation and other activities crucial to regulation of the immune response. Can stimulate B-cells, monocytes, lymphokine-activated killer cells, natural killer cells, and glioma cells.

Involvement in disease

Note=A chromosomal aberration involving IL2 is found in a form of T-cell acute lymphoblastic leukemia (T-ALL). Translocation t(4;16)(q26;p13) with involves TNFRSF17.

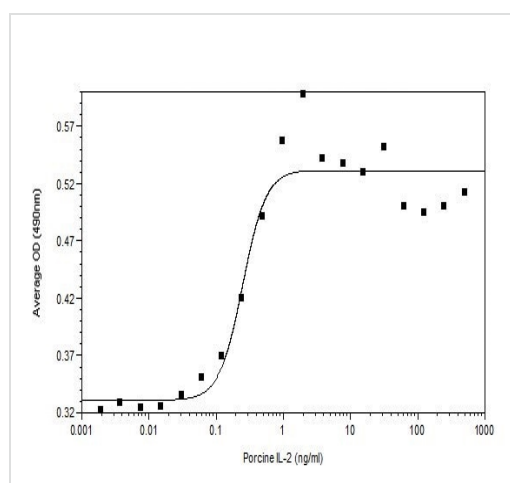
Sequence similarities

Belongs to the IL-2 family.

Cellular localization

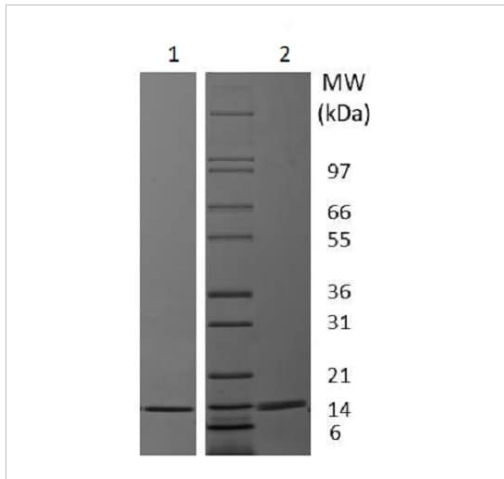
Secreted.

Images



CTLL-2 cell proliferation $ED_{50} \leq 1 \text{ ng/mL}$ ($\geq 1.0 \times 10^6 \text{ units/mg}$).

Functional Studies - Recombinant pig IL-2 protein
(Active) (ab238302)



SDS-PAGE - Recombinant pig IL-2 protein (Active)
(ab238302)

Recombinant pig IL2 protein (Active) (ab238302) used at 1 µg.

4-20% Tris-Glycine gel, stained with Coomassie Blue.

Lane 1: Non-reducing conditions.

Lane 2: Reducing conditions.

Please note: All products are "FOR RESEARCH USE ONLY. NOT FOR USE IN DIAGNOSTIC PROCEDURES"

Our Abpromise to you: Quality guaranteed and expert technical support

- Replacement or refund for products not performing as stated on the datasheet
- Valid for 12 months from date of delivery
- Response to your inquiry within 24 hours
- We provide support in Chinese, English, French, German, Japanese and Spanish
- Extensive multi-media technical resources to help you
- We investigate all quality concerns to ensure our products perform to the highest standards

If the product does not perform as described on this datasheet, we will offer a refund or replacement. For full details of the Abpromise, please visit <https://www.abcam.com/abpromise> or contact our technical team.

Terms and conditions

- Guarantee only valid for products bought direct from Abcam or one of our authorized distributors