

Product datasheet

Recombinant Protein G ab155724

[1 References](#) [2 Images](#)

Description

Product name	Recombinant Protein G
Purity	> 98 % SDS-PAGE. Lyophilized from 650 µL bulk protein in a 0.2 µm filtered solution of 0.1 M NaH ₂ PO ₄ , pH8.5 with 10% trehalose as protectant.
Endotoxin level	< 1.000 Eu/µg
Expression system	Escherichia coli
Accession	<u>P19909</u>
Protein length	Protein fragment
Animal free	No
Nature	Recombinant
Predicted molecular weight	31 kDa
Tags	His tag N-Terminus
Additional sequence information	Contains only one single cysteine at the C-terminus, which is designed for single point attachment coupling for immobilization.

Specifications

Our **Abpromise guarantee** covers the use of **ab155724** in the following tested applications.

The application notes include recommended starting dilutions; optimal dilutions/concentrations should be determined by the end user.

Applications	SDS-PAGE
Form	Lyophilized

Preparation and Storage

Stability and Storage	Shipped at 4°C. Store at +4°C short term (1-2 weeks). Upon delivery aliquot. Store at -20°C or -80°C. Avoid freeze / thaw cycle. pH: 8.5 Constituents: 1.1998% Sodium Phosphate Monobasic, 10% D-(+)-Trehalose dihydrate
Reconstitution	Reconstitute with sterile deionized water to a final concentration of 20mg/ml.

General Info

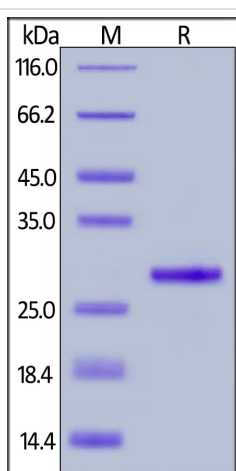
Relevance

Protein G is a bacterial protein derived from the cell wall of certain strains of β -hemolytic Streptococci. It binds with high affinity to the Fc portion of various classes and subclasses of immunoglobulins from a variety of species. Protein G binds to all IgG subclasses from human, mouse and rat species. It also binds to total IgG from guinea pig, rabbit, goat, cow, sheep, and horse. Protein G binds preferentially to the Fc portion of IgG, but can also bind to the Fab region, making it useful for purification of F(ab') fragments of IgG. Due to its affinity for the Fc region of many mammalian immunoglobulins, protein G is considered a universal reagent in biochemistry and immunology.

Cellular localization

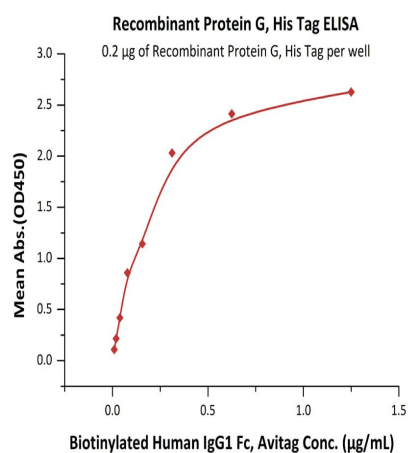
Cell Wall and Secreted

Images



SDS-PAGE analysis of reduced ab155724 stained overnight with Coomassie Blue.

SDS-PAGE - Recombinant Protein G (ab155724)



Immobilized Recombinant Protein G, His Tag (ab155724) at 2 µg/mL (100 µL/well) can bind Biotinylated Human IgG1 Fc, Avitag ([ab246197](#)) with a linear range of 0.01-0.313 µg/mL

ELISA - Recombinant Protein G (ab155724)

Please note: All products are "FOR RESEARCH USE ONLY. NOT FOR USE IN DIAGNOSTIC PROCEDURES"

Our Abpromise to you: Quality guaranteed and expert technical support

- Replacement or refund for products not performing as stated on the datasheet
- Valid for 12 months from date of delivery
- Response to your inquiry within 24 hours

- We provide support in Chinese, English, French, German, Japanese and Spanish
- Extensive multi-media technical resources to help you
- We investigate all quality concerns to ensure our products perform to the highest standards

If the product does not perform as described on this datasheet, we will offer a refund or replacement. For full details of the Abpromise, please visit <https://www.abcam.com/abpromise> or contact our technical team.

Terms and conditions

- Guarantee only valid for products bought direct from Abcam or one of our authorized distributors