

Recombinant Rabbit IL-2 Protein (Active) ab307411

[4 Images](#)

Description

Product name	Recombinant Rabbit IL-2 Protein (Active)	
Biological activity	Fully biologically active determined by the dose dependent proliferation of CTLL-2 cells. ED50 is ≤ 1.35 ng/ml, corresponding to a specific activity of 7.4×10^5 units/mg.	
Purity	<p>≥ 95 % HPLC.</p> <p>SDS-PAGE ≥ 95%</p>	
Endotoxin level	≤ 0.005 Eu/ μ g	
Expression system	HEK 293 cells	
Accession	<u>O77620</u>	
Protein length	Full length protein	
Animal free	Yes	
Carrier free	Yes	
Nature	Recombinant	
Species	Rabbit	
Sequence	<p>APTSSSTKETQEQLDQLLLDLQVLLKGVNDYKNSKLSRML</p> <p>TFKFYMPKKV</p> <p>TELKHLQCLEEELKPLEEVLNLAQGKNSHGGNTRESISNIN</p> <p>VTVLKLGKGS ETFMCEYDETVTMEFLNRWITFCQSIISSSS</p>	
Predicted molecular weight	15 kDa	
Actual molecular weight	15 kDa	
Molecular weight information	Predicted MW is 15162.36 Da (+/- 10 Da by ESI-TOF). Observed MW is 15162.91 Da.	
Amino acids	21 to 153	
Additional sequence information	N-terminal glycine (On N-Term)	

Specifications

Our **Abpromise guarantee** covers the use of **ab307411** in the following tested applications.

The application notes include recommended starting dilutions; optimal dilutions/concentrations should be determined by the end user.

Applications	HPLC
	SDS-PAGE
	Mass Spectrometry

Form Lyophilized

Preparation and Storage

Stability and Storage Shipped at Room Temperature. Store at Room Temperature.

pH: 7.40

Constituents: 0.727% Dibasic monohydrogen potassium phosphate, 0.248% Monobasic dihydrogen potassium phosphate, 10.26% Trehalose

This product is an active protein and may elicit a biological response in vivo, handle with caution.

Reconstitution

Lyophilized contents may appear as either a translucent film or a white powder. This variance does not affect the quality of the product. Store lyophilized form at room temperature. Reconstitute in phosphate buffered saline, aliquot and store at -80°C for 12 months or +4°C for 1 week. Avoid repeated freeze-thaw.

General Info

Function

Produced by T-cells in response to antigenic or mitogenic stimulation, this protein is required for T-cell proliferation and other activities crucial to regulation of the immune response. Can stimulate B-cells, monocytes, lymphokine-activated killer cells, natural killer cells, and glioma cells.

Involvement in disease

Note=A chromosomal aberration involving IL2 is found in a form of T-cell acute lymphoblastic leukemia (T-ALL). Translocation t(4;16)(q26;p13) with involves TNFRSF17.

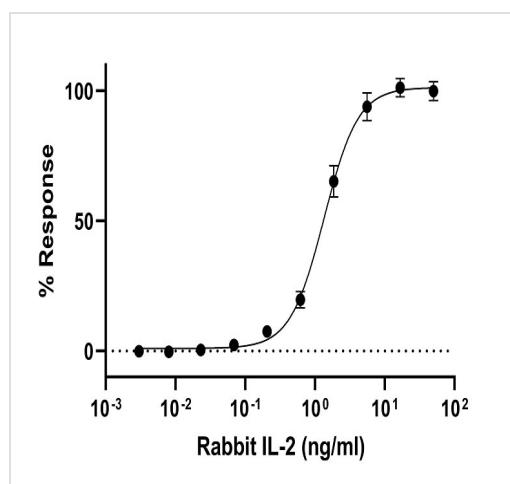
Sequence similarities

Belongs to the IL-2 family.

Cellular localization

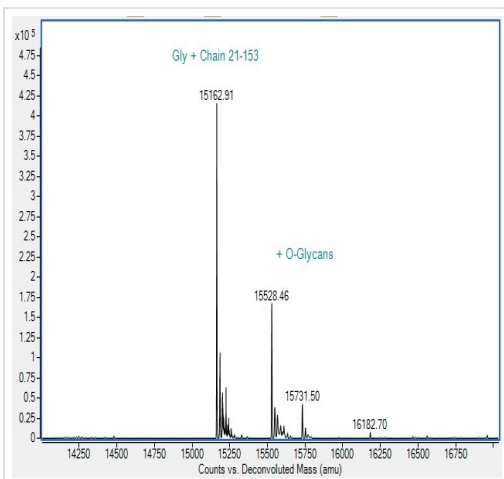
Secreted.

Images



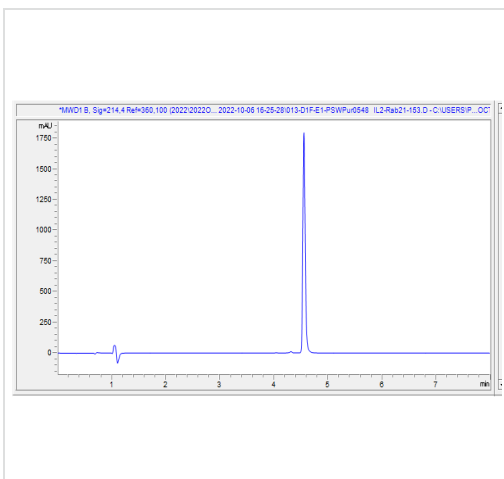
Fully biologically active determined by the dose dependent proliferation of CTLL-2 cells. ED₅₀ is ≤ 1.35 ng/ml, corresponding to a specific activity of 7.4 × 10⁵ units/mg.

Biological Activity - Recombinant Rabbit IL-2 Protein
(Active) (ab307411)



Mass Spectrometry - Recombinant Rabbit IL-2 Protein (ab307411)

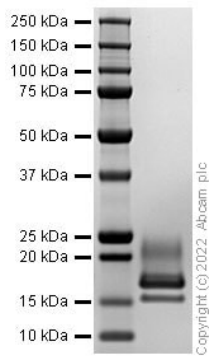
Mass determination by ESI-TOF. Predicted MW is 15162.36 Da (+/-10 Da by ESI-TOF). Observed MW is 15162.91 Da.



HPLC - Recombinant Rabbit IL-2 Protein (ab307411)

HPLC analysis of ab307411

SDS-PAGE analysis of ab307411



SDS-PAGE - Recombinant Rabbit IL-2 Protein
(ab307411)

Please note: All products are "FOR RESEARCH USE ONLY. NOT FOR USE IN DIAGNOSTIC PROCEDURES"

Our Abpromise to you: Quality guaranteed and expert technical support

- Replacement or refund for products not performing as stated on the datasheet
- Valid for 12 months from date of delivery
- Response to your inquiry within 24 hours
- We provide support in Chinese, English, French, German, Japanese and Spanish
- Extensive multi-media technical resources to help you
- We investigate all quality concerns to ensure our products perform to the highest standards

If the product does not perform as described on this datasheet, we will offer a refund or replacement. For full details of the Abpromise, please visit <https://www.abcam.com/abpromise> or contact our technical team.

Terms and conditions

- Guarantee only valid for products bought direct from Abcam or one of our authorized distributors