

Product datasheet

Recombinant rat BVR protein ab91622

[3 Images](#)

Description

Product name	Recombinant rat BVR protein
Biological activity	BVR Assay: Positive (> 180 units/mg) 1 unit of BVR will transform 1 nanomole of biliverdin to bilirubin in an NADPH dependent reaction at pH 8.5 at 37°C in 1 minute.
Purity	> 95 % SDS-PAGE. Purified by Multi-Step Chromatography. > 95% pure as determined by SDS-PAGE and Western Blot analysis.
Expression system	Escherichia coli
Protein length	Full length protein
Animal free	No
Nature	Recombinant
Species	Rat

Specifications

Our **[Abpromise guarantee](#)** covers the use of **ab91622** in the following tested applications.

The application notes include recommended starting dilutions; optimal dilutions/concentrations should be determined by the end user.

Applications	Western blot Functional Studies SDS-PAGE
Form	Liquid
Additional notes	BVR Assay: Positive (> 180 units/mg) 1 unit of BVR will transform 1 nanomole of biliverdin to bilirubin in an NADPH dependent reaction at pH 8.5 at 37°C in 1 minute. Protein previously labeled as Biliverdin Reductase.

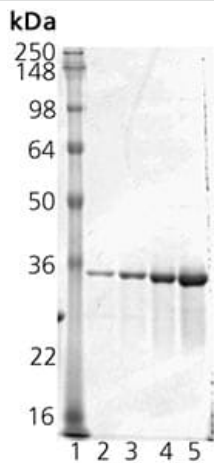
Preparation and Storage

Stability and Storage	Shipped on dry ice. Upon delivery aliquot and store at -80°C. Avoid freeze / thaw cycles. Constituents: 0.077% (R*,R*)-1,4-Dimercaptobutan-2,3-diol, 0.79% Tris HCl, 0.0292% EDTA This product is an active protein and may elicit a biological response in vivo, handle with caution.
------------------------------	--

General Info

Function	Reduces the gamma-methene bridge of the open tetrapyrrole, biliverdin IX alpha, to bilirubin with the concomitant oxidation of a NADH or NADPH cofactor.
Tissue specificity	Liver.
Pathway	Porphyrin-containing compound metabolism; protoheme degradation.
Involvement in disease	Hyperbiliverdinemia
Sequence similarities	Belongs to the Gfo/lah/MocA family. Biliverdin reductase subfamily.
Cellular localization	Cytoplasm.

Images



SDS-PAGE - Recombinant rat BVR protein
(ab91622)

SDS-PAGE Analysis:

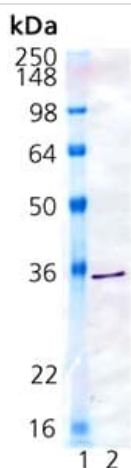
Lane 1: Molecular weight marker

Lane 2: 0.5 µg ab91622

Lane 3: 1.0 µg ab91622

Lane 4: 2.0 µg ab91622

Lane 5: 5.0 µg ab91622

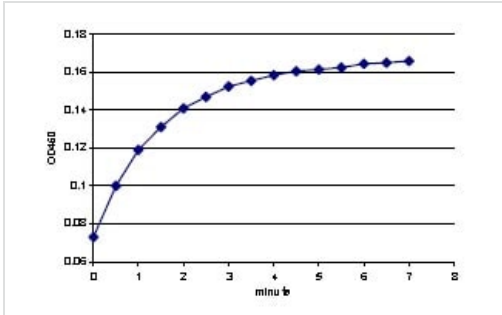


Western blot - Recombinant rat BVR protein
(ab91622)

All lanes : BVR Polyclonal Antibody

Lane 1 : Molecular weight markers

Lane 2 : ab91622 at 0.1 µg



BVR Activity: 1 μ g of ab91622 was incubated with biliverdin in the presence of NADPH at pH 8.5, 37°C. Product formation was monitored with a spectrometer at 450 nm.

Functional Studies - Recombinant rat BVR protein (ab91622)

Please note: All products are "FOR RESEARCH USE ONLY. NOT FOR USE IN DIAGNOSTIC PROCEDURES"

Our Abpromise to you: Quality guaranteed and expert technical support

- Replacement or refund for products not performing as stated on the datasheet
- Valid for 12 months from date of delivery
- Response to your inquiry within 24 hours
- We provide support in Chinese, English, French, German, Japanese and Spanish
- Extensive multi-media technical resources to help you
- We investigate all quality concerns to ensure our products perform to the highest standards

If the product does not perform as described on this datasheet, we will offer a refund or replacement. For full details of the Abpromise, please visit <https://www.abcam.com/abpromise> or contact our technical team.

Terms and conditions

- Guarantee only valid for products bought direct from Abcam or one of our authorized distributors