

Product datasheet

Recombinant Rat Cyclophilin A protein ab207156

1 Image

Description	
Product name	Recombinant Rat Cyclophilin A protein
Purity	> 95 % Densitometry.
Endotoxin level	< 1.000 Eu/µg
Expression system	Escherichia coli
Accession	<b><u>P10111</u></b>
Protein length	Full length protein
Animal free	No
Nature	Recombinant
Species	Rat
Sequence	MKHHHHHHASVNPTVFFDITADGEPLGRVCFELFADKVP KTAENFRALST GEKGFGYKGSSFHRIIPGFMCQGGDFTRHNGTGKKSIYGE KFEDENFILK HTGPGILSMANAGPNTNGSQFFICTAKTEWLDGKHVVFGK VKEGMSIVEA MERFGSRNGKTSKKITISDCGQL
Predicted molecular weight	19 kDa including tags
Amino acids	2 to 164
Tags	His tag N-Terminus

Specifications	
Our <b><u>Abpromise guarantee</u></b> covers the use of <b>ab207156</b> in the following tested applications.	
The application notes include recommended starting dilutions; optimal dilutions/concentrations should be determined by the end user.	
Applications	Mass Spectrometry SDS-PAGE
Mass spectrometry	LC-MS/MS
Form	Lyophilized

Preparation and Storage

## Stability and Storage

Shipped at 4°C. Upon delivery aliquot. Store at -80°C. Avoid freeze / thaw cycle.

Constituents: 5% Trehalose, 95% PBS

Lyophilised from a 0.4 µm filtered solution.

## Reconstitution

Add deionized water to prepare a working stock solution of approximately 0.5 mg/ml and let the lyophilised pellet dissolve completely.

## General Info

### Function

PPlases accelerate the folding of proteins. It catalyzes the cis-trans isomerization of proline imidic peptide bonds in oligopeptides.

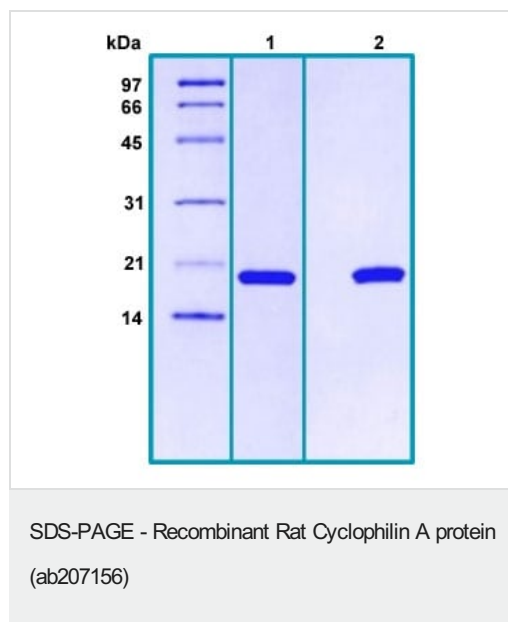
### Sequence similarities

Belongs to the cyclophilin-type PPlase family. PPlase A subfamily.  
Contains 1 PPlase cyclophilin-type domain.

### Cellular localization

Cytoplasm.

## Images



14 % SDS-PAGE analysis of ab207156.

Lane 1: Reduced and boiled sample, 2.5 µg/lane.

Lane 2: Non-reduced and non-boiled sample, 2.5 µg/lane.

**Please note:** All products are "FOR RESEARCH USE ONLY. NOT FOR USE IN DIAGNOSTIC PROCEDURES"

## Our Abpromise to you: Quality guaranteed and expert technical support

- Replacement or refund for products not performing as stated on the datasheet
- Valid for 12 months from date of delivery
- Response to your inquiry within 24 hours
- We provide support in Chinese, English, French, German, Japanese and Spanish
- Extensive multi-media technical resources to help you
- We investigate all quality concerns to ensure our products perform to the highest standards

If the product does not perform as described on this datasheet, we will offer a refund or replacement. For full details of the Abpromise, please visit <https://www.abcam.com/abpromise> or contact our technical team.

#### **Terms and conditions**

---

- Guarantee only valid for products bought direct from Abcam or one of our authorized distributors