

## Product datasheet

# Recombinant rat Cyclophilin F protein (Active) ab219422

[1 Image](#)

### Description

|  |  |
|--|--|
| <b>Product name</b>                    | Recombinant rat Cyclophilin F protein (Active)   |
| <b>Biological activity</b>             | Specific activity is > 1,300 nmol/min/mg, and is defined as the amount of enzyme that cleaves 1 nmol of suc-AAPF-PNA per minute at 37°C in Tris-HCl pH 8.0 using chymotrypsin.   |
| <b>Purity</b>                          | > 90 % SDS-PAGE.<br>Purified by using conventional chromatography techniques.  |
| <b>Expression system</b>               | Escherichia coli   |
| <b>Accession</b>                       | <b><u>P29117</u></b>   |
| <b>Protein length</b>                  | Full length protein  |
| <b>Animal free</b>                     | No   |
| <b>Nature</b>                          | Recombinant  |
| <b>Species</b>                         | Rat  |
| <b>Sequence</b>                        | MGSSHHHHHH SSGLVPRGSH MGSCSDGGAR<br>GANSSSQNPL VYLDVGADGQ PLGRVVLELK<br>ADVVPKTAEN FRALCTGEKG FGKYGSTFHR<br>VIPAFMCQAG DFTNHNGTGG KSIYGSRFPD<br>ENFTLKHVGP GVLSMANAGP NTNGSQFFIC<br>TIKTDWLDGK HVVFGHVKEG MDVVKKIESF<br>GSKSGKTSKK MITDCGQLS |
| <b>Predicted molecular weight</b>      | 21 kDa including tags  |
| <b>Amino acids</b>                     | 29 to 206  |
| <b>Tags</b>                            | His tag N-Terminus   |
| <b>Additional sequence information</b> | Mature full length form without signal peptide.  |

### Specifications

Our **Abpromise guarantee** covers the use of **ab219422** in the following tested applications.

The application notes include recommended starting dilutions; optimal dilutions/concentrations should be determined by the end user.

|                     |                    |
|---------------------|--------------------|
| <b>Applications</b> | Mass Spectrometry  |
|                     | Functional Studies |

|                          |           |
|--------------------------|-----------|
|                          | SDS-PAGE  |
| <b>Mass spectrometry</b> | MALDI-TOF |
| <b>Form</b>              | Liquid    |

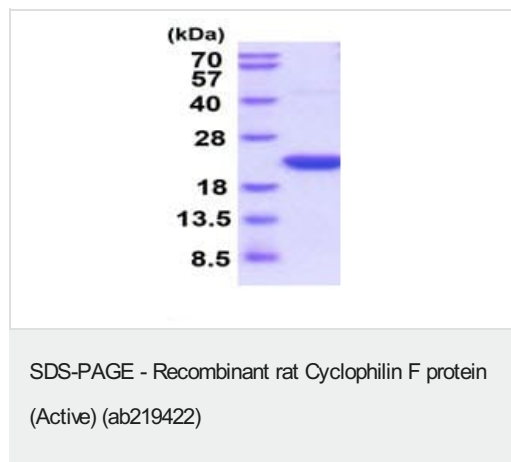
## Preparation and Storage

|                              |   |
|------------------------------|---|
| <b>Stability and Storage</b> | <p>Shipped at 4°C. Store at +4°C short term (1-2 weeks). Upon delivery aliquot. Store at -20°C or -80°C. Avoid freeze / thaw cycle.</p> <p>pH: 7.40</p> <p>Constituents: PBS, 10% Glycerol (glycerin, glycerine), 0.02% DTT</p> <p>This product is an active protein and may elicit a biological response in vivo, handle with caution.</p> |
|------------------------------|---|

## General Info

|                              |   |
|------------------------------|---|
| <b>Function</b>              | PPases accelerate the folding of proteins. It catalyzes the cis-trans isomerization of proline imidic peptide bonds in oligopeptides. |
| <b>Sequence similarities</b> | <p>Belongs to the cyclophilin-type PPase family.</p> <p>Contains 1 PPase cyclophilin-type domain.</p>                                 |
| <b>Cellular localization</b> | Mitochondrion matrix.   |

## Images



15% SDS-PAGE - Recombinant rat Cyclophilin F protein (Active) (ab219422) at 3 µg.

**Please note:** All products are "FOR RESEARCH USE ONLY. NOT FOR USE IN DIAGNOSTIC PROCEDURES"

## Our Abpromise to you: Quality guaranteed and expert technical support

- Replacement or refund for products not performing as stated on the datasheet
- Valid for 12 months from date of delivery
- Response to your inquiry within 24 hours
- We provide support in Chinese, English, French, German, Japanese and Spanish

- Extensive multi-media technical resources to help you
- We investigate all quality concerns to ensure our products perform to the highest standards

If the product does not perform as described on this datasheet, we will offer a refund or replacement. For full details of the Abpromise, please visit <https://www.abcam.com/abpromise> or contact our technical team.

#### **Terms and conditions**

---

- Guarantee only valid for products bought direct from Abcam or one of our authorized distributors