

Product datasheet

Recombinant Rat Factor D/CFD protein (Tagged) ab226230

[1 Image](#)

Description

Product name	Recombinant Rat Factor D/CFD protein (Tagged)
Purity	> 90 % SDS-PAGE.
Expression system	Mammalian
Accession	<u>P32038</u>
Protein length	Full length protein
Animal free	No
Nature	Recombinant
Species	Rat
Sequence	ILGGQEAMAHARPYMASVQVNGTHVCGGTLVDEQWVLS AAHCMDGVTKDE VVQVLLGAHSLSSPEPYKHLVDVQSVVLHPGSRPDSVED DLMLFKLSHNA SLGPHVRPLPLQREDREVKPGTLCDVAGWGVVTHAGRR PDVLQQLTVSIM DRNTCNLRTYHDGAIKNNMCAESNRRDTCRGDSGGPLV CGDAVEAVVTW GSRVCGNRRKPGVFTRVATYVPWIENVLSGNVSVNVT
Predicted molecular weight	30 kDa including tags
Amino acids	26 to 263
Tags	His tag N-Terminus
Additional sequence information	Full-length mature chain with N-terminal 1-xHis tag and C-terminal Myc tag.

Specifications

Our **Abpromise guarantee** covers the use of **ab226230** in the following tested applications.

The application notes include recommended starting dilutions; optimal dilutions/concentrations should be determined by the end user.

Applications	SDS-PAGE
Form	Liquid
Additional notes	This product was previously labelled as Factor D

Preparation and Storage

Stability and Storage

Shipped at 4°C. Upon delivery aliquot. Store at -20°C or -80°C. Avoid freeze / thaw cycle.

pH: 7.2

Constituents: 50% Glycerol (glycerin, glycerine), Tris buffer

General Info

Function

Factor D cleaves factor B when the latter is complexed with factor C3b, activating the C3bbb complex, which then becomes the C3 convertase of the alternate pathway. Its function is homologous to that of C1s in the classical pathway.

Involvement in disease

Defects in CFD are the cause of complement factor D deficiency (CFD deficiency) [MIM:134350]. CFD deficiency predisposes to invasive meningococcal disease.

Sequence similarities

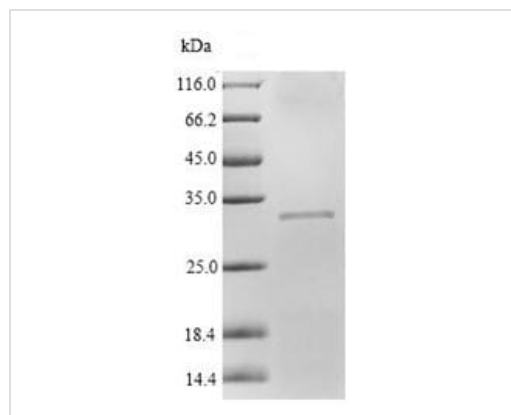
Belongs to the peptidase S1 family.

Contains 1 peptidase S1 domain.

Cellular localization

Secreted.

Images



SDS-PAGE - Recombinant Rat Factor D/CFD protein (Tagged) (ab226230)

(Tris-Glycine gel) Discontinuous SDS-PAGE (reduced) with 5% enrichment gel and 15% separation gel.

Please note: All products are "FOR RESEARCH USE ONLY. NOT FOR USE IN DIAGNOSTIC PROCEDURES"

Our Abpromise to you: Quality guaranteed and expert technical support

- Replacement or refund for products not performing as stated on the datasheet
- Valid for 12 months from date of delivery
- Response to your inquiry within 24 hours

- We provide support in Chinese, English, French, German, Japanese and Spanish
- Extensive multi-media technical resources to help you
- We investigate all quality concerns to ensure our products perform to the highest standards

If the product does not perform as described on this datasheet, we will offer a refund or replacement. For full details of the Abpromise, please visit <https://www.abcam.com/abpromise> or contact our technical team.

Terms and conditions

- Guarantee only valid for products bought direct from Abcam or one of our authorized distributors