

Product datasheet

Recombinant rat IL-17A protein (Active) ab282393

[5 Images](#)

Description

Product name	Recombinant rat IL-17A protein (Active)	
Biological activity	Fully biologically active determined by the dose dependent induction of IL-6 secretion in NIH-3T3 cells. ED50 for this effect is ≤ 75.83 ng/ml, corresponding to specific activity of 1.32×10^4 units/mg.	
Purity	>= 95 % SDS-PAGE. =95% by HPLC	
Endotoxin level	≤ 0.005 Eu/ μ g	
Expression system	HEK 293 cells	
Accession	<u>Q61453</u>	
Protein length	Full length protein	
Animal free	Yes	
Carrier free	Yes	
Nature	Recombinant	
Species	Rat	
Sequence	AVLIPQSSVCPNAEANNFLQNVKVNKVINSLSSKASSRR PSDYLNIRSTS PWTLSRNEDPDRYPSVWEAQCRHQRCVNAEGKLDHHM NSVLIQQEILVL KREPEKCPFTRVEKMLVGVGCTCVSSIVRHAS	
Predicted molecular weight	15 kDa	
Amino acids	18 to 150	
Additional sequence information	N-terminal glycine	
Description	Recombinant rat IL-17A protein	

Specifications

Our **Abpromise guarantee** covers the use of **ab282393** in the following tested applications.

The application notes include recommended starting dilutions; optimal dilutions/concentrations should be determined by the end user.

Applications	HPLC
	Mass Spectrometry

SDS-PAGE
Functional Studies
Sandwich ELISA
Cell Culture

Form Lyophilized

Preparation and Storage

Stability and Storage Shipped at Room Temperature. Store at Room Temperature.
pH: 7.4
Constituents: 0.727% Dibasic monohydrogen potassium phosphate, 0.428% Monobasic dihydrogen potassium phosphate, 10.26% Trehalose
This product is an active protein and may elicit a biological response in vivo, handle with caution.

Reconstitution Store lyophilized form at room temperature. Reconstitute in PBS, aliquot and store at -80°C for 12 months or +4°C for 1 week. Avoid repeated freeze-thaw. Lyophilized contents may appear as either a translucent film or a white powder. This variance does not affect the quality of the product.

General Info

Function Induces stromal cells to produce proinflammatory and hematopoietic cytokines. Enhances the surface expression of the intracellular adhesion molecule-1 (ICAM-1) in fibroblasts.

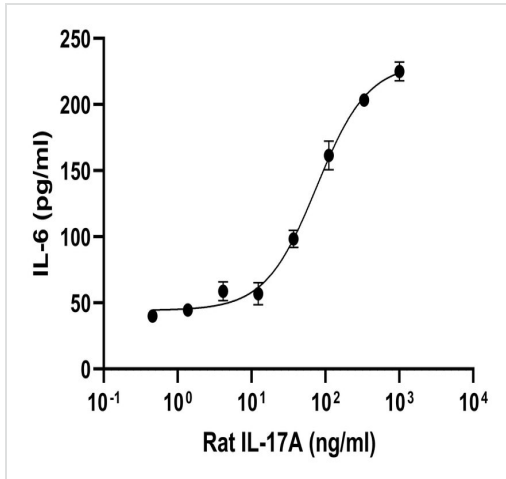
Tissue specificity Restricted to activated memory T-cells.

Sequence similarities Belongs to the IL-17 family.

Post-translational modifications Found both in glycosylated and nonglycosylated forms.

Cellular localization Secreted.

Images



Functional Studies - Recombinant rat IL-17A protein
(Active) (ab282393)

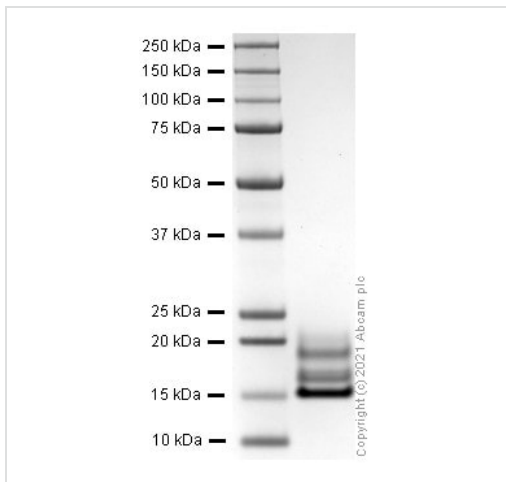
Functional analysis of ab282393.

Fully biologically active determined by the dose dependent induction of IL-6 secretion in NIH-3T3 cells.

ED50 for this effect is ≤ 75.83 ng/ml, corresponding to specific activity of 1.32×10^4 units/mg.

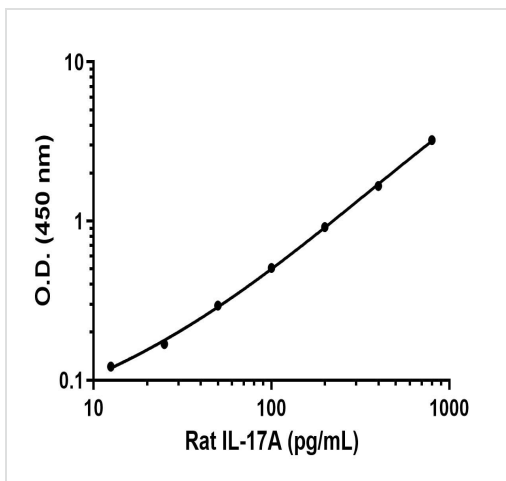
Cell based assay testing is performed on the first lot of protein only and is provided as a reference for protein activity; subsequent lots of protein must pass all biophysical quality control parameters that meet the same parameters as the first lot.

Lot: GR3393274-4



SDS-PAGE - Recombinant rat IL-17A protein
(Active) (ab282393)

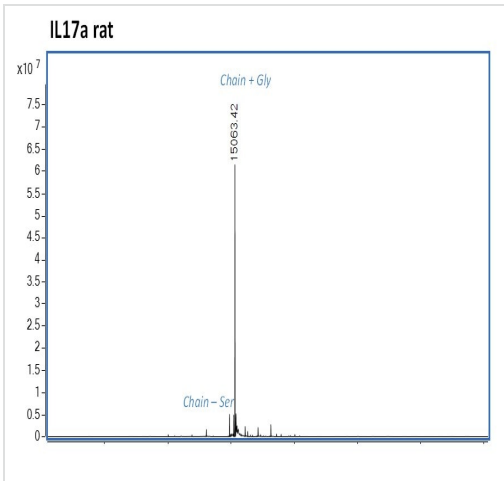
SDS-page analysis of ab282393.



Sandwich ELISA - Recombinant rat IL-17A protein
(Active) (ab282393)

Sandwich ELISA - Recombinant rat IL-17A protein standard curve.

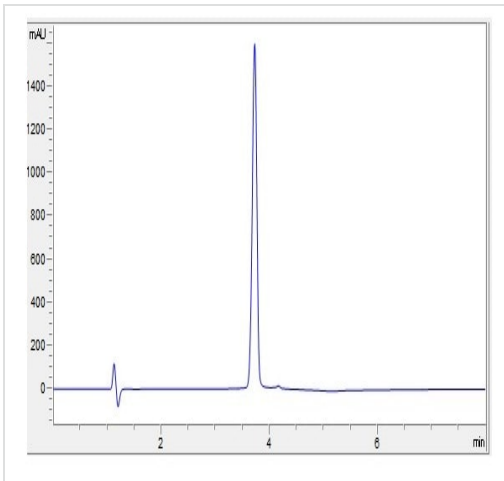
Background subtracted standard curve using Rat IL-17A Antibody Pair - BSA and Azide free (**ab242039**) and Recombinant rat IL-17A protein (Active) (ab282393) in sandwich ELISA. The ELISA was performed using the components of the corresponding SimpleStep® kit, which uses the same antibody pair with a different formulation and format.



Mass Spectrometry - Recombinant rat IL-17A protein (Active) (ab282393)

Mass determination by ESI-TOF.

Predicted MW is 15062.23 Da (+/- 10 Da by ESI-TOF). Observed MW is 15063.42.



HPLC - Recombinant rat IL-17A protein (Active) (ab282393)

HPLC analysis of ab282393.

Please note: All products are "FOR RESEARCH USE ONLY. NOT FOR USE IN DIAGNOSTIC PROCEDURES"

Our Abpromise to you: Quality guaranteed and expert technical support

- Replacement or refund for products not performing as stated on the datasheet
- Valid for 12 months from date of delivery
- Response to your inquiry within 24 hours
- We provide support in Chinese, English, French, German, Japanese and Spanish
- Extensive multi-media technical resources to help you
- We investigate all quality concerns to ensure our products perform to the highest standards

If the product does not perform as described on this datasheet, we will offer a refund or replacement. For full details of the Abpromise, please visit <https://www.abcam.com/abpromise> or contact our technical team.

Terms and conditions

- Guarantee only valid for products bought direct from Abcam or one of our authorized distributors