

## Product datasheet

### Recombinant REBOV GP protein ab190132

[2 Images](#)

#### Description

<b>Product name</b>	Recombinant REBOV GP protein
<b>Purity</b>	> 70 % SDS-PAGE.
<b>Expression system</b>	Baculovirus infected Sf9 cells
<b>Accession</b>	<u><b>Q66799</b></u>
<b>Protein length</b>	Protein fragment
<b>Animal free</b>	No
<b>Nature</b>	Recombinant
<b>Predicted molecular weight</b>	72 kDa
<b>Tags</b>	His tag C-Terminus
<b>Additional sequence information</b>	Mature recombinant Reston ebolavirus glycoprotein (GP) minus the transmembrane domain.

#### Specifications

Our **Abpromise guarantee** covers the use of **ab190132** in the following tested applications.

The application notes include recommended starting dilutions; optimal dilutions/concentrations should be determined by the end user.

<b>Applications</b>	Western blot SDS-PAGE
<b>Form</b>	Liquid
<b>Additional notes</b>	The theoretical molecular weight of the protein is ~72 kDa including the His tag, without glycosylation. Because of the glycosylated nature of this protein, migration in an SDS-PAGE gel results in a broad band.

#### Preparation and Storage

<b>Stability and Storage</b>	Shipped at 4°C. Store at -80°C. Constituents: 89% PBS, 10% Glycerol  Supplemented with arginine and glutamic acid.
------------------------------	-----------------------------------------------------------------------------------------------------------------------------

General Info

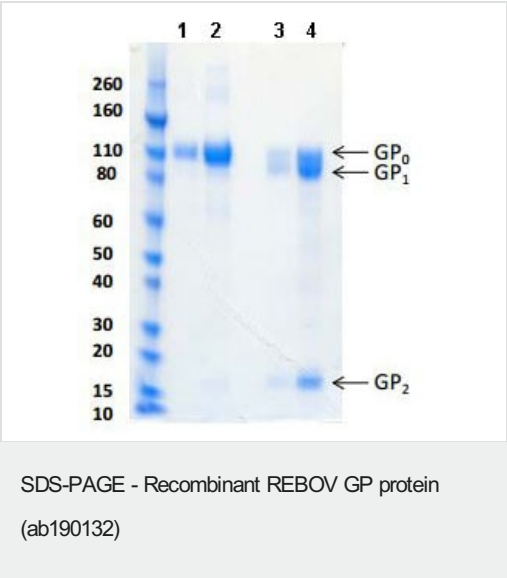
Relevance

REBOV GP seems to possess an anti-inflammatory activity as it can reverse the barrier-decreasing effects of TNF alpha. Might therefore contribute to the lack of inflammatory reaction seen during infection in spite the of extensive necrosis and massive virus production. Does not seem to be involved in activation of primary macrophages. Does not seem to interact specifically with neutrophils. Delta-peptide does not seem to be involved in activation of primary macrophages B REBOV GP is a homodimer; disulfide-linked. The homodimers are linked by two disulfide bonds in a parallel orientation. Delta-peptide is a monome

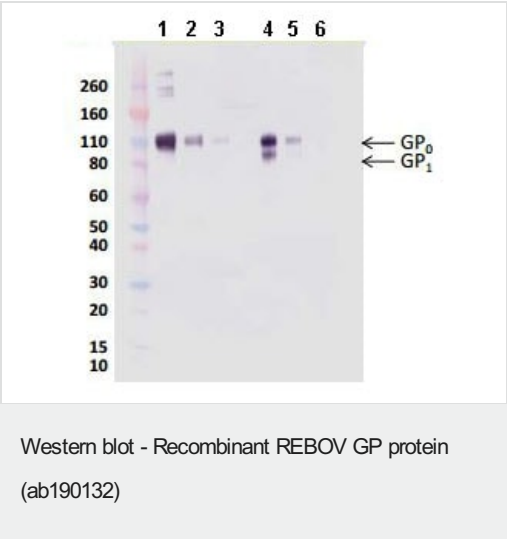
Cellular localization

Secreted

Images



SDS-PAGE analysis of 1 µg (lanes 1 and 3) and 5 µg (lanes 2 and 4) of ab190132 under non-reducing (lanes 1 and 2) and reducing conditions (lanes 3 and 4).



**All lanes :** Rabbit anti-REBOV GP pAb at 0.5 µg/ml

**Lanes 1 & 4 :** Recombinant REBOV GP protein (ab190132) at 0.5 µg

**Lanes 2 & 5 :** Recombinant REBOV GP protein (ab190132) at 0.1 µg

**Lanes 3 & 6 :** Recombinant REBOV GP protein (ab190132) at 0.05 µg

Secondary

**All lanes :** Anti-rabbit IgG-AP conjugate

Nonreducing conditions (lanes 1-3) and reducing conditions (lanes 4-6).

**Please note:** All products are "FOR RESEARCH USE ONLY. NOT FOR USE IN DIAGNOSTIC PROCEDURES"

### **Our Abpromise to you: Quality guaranteed and expert technical support**

---

- Replacement or refund for products not performing as stated on the datasheet
- Valid for 12 months from date of delivery
- Response to your inquiry within 24 hours
- We provide support in Chinese, English, French, German, Japanese and Spanish
- Extensive multi-media technical resources to help you
- We investigate all quality concerns to ensure our products perform to the highest standards

If the product does not perform as described on this datasheet, we will offer a refund or replacement. For full details of the Abpromise, please visit <https://www.abcam.com/abpromise> or contact our technical team.

### **Terms and conditions**

---

- Guarantee only valid for products bought direct from Abcam or one of our authorized distributors