

Product datasheet

Recombinant rhesus monkey CD40 protein (Fc Chimera) ab208480

[2 Images](#)

Description

Product name	Recombinant rhesus monkey CD40 protein (Fc Chimera)
Biological activity	Measured by its binding ability in a functional ELISA. Immobilized ab208480 at 2µg/mL (100 µl/well), can bind Recombinant Human CD40LG /CD40 Ligand Protein with a linear of 5-50 ng/mL.
Purity	> 95 % SDS-PAGE.
Endotoxin level	< 1.000 Eu/µg
Expression system	HEK 293 cells
Accession	<u>H9ZFM8</u>
Protein length	Protein fragment
Animal free	No
Nature	Recombinant
Species	Rhesus monkey
Sequence	EPPTACREKQYLINSQCCSLCQPGQKLVS DCTEFTETEC L PCSESEFLDT WNRETRCHQHKYCDPNLGLRVQQKGTSETDTICTCEEGL HCMSESCESC V PHRSCLPGFGVKQIATGVSDTICEPCPVGFFSNVSSAFEK CRPWTSCETK DLVVQQAGTNKTDVVCGPQDRQR
Predicted molecular weight	46 kDa including tags
Amino acids	21 to 193
Additional sequence information	Chimera fused with a Human IgG1 Fc tag at the C-terminus (NP_001252791.1).

Specifications

Our **Abpromise guarantee** covers the use of **ab208480** in the following tested applications.

The application notes include recommended starting dilutions; optimal dilutions/concentrations should be determined by the end user.

Applications	Functional Studies
	SDS-PAGE

Form Lyophilized

Preparation and Storage

Stability and Storage

Shipped at 4°C. Store at -80°C.

pH: 7.40

Constituents: 0.61% Tris, 0.75% Glycine, 5% Trehalose, 0.44% L-Arginine, 0.87% Sodium chloride

Note: 5-10% trehalose is commonly used for freeze drying, and after reconstitution, the trehalose is mostly about 3-5%.

This product is an active protein and may elicit a biological response in vivo, handle with caution.

Reconstitution

Reconstitute with sterile deionized water to a concentration of 250 µg/ml.

General Info

Function

Receptor for TNFSF5/CD40LG.

Tissue specificity

B-cells and in primary carcinomas.

Involvement in disease

Defects in CD40 are the cause of hyper-IgM immunodeficiency syndrome type 3 (HIGM3) [MIM:606843]; also known as hyper-IgM syndrome 3. HIGM3 is an autosomal recessive disorder which includes an inability of B cells to undergo isotype switching, one of the final differentiation steps in the humoral immune system, an inability to mount an antibody-specific immune response, and a lack of germinal center formation.

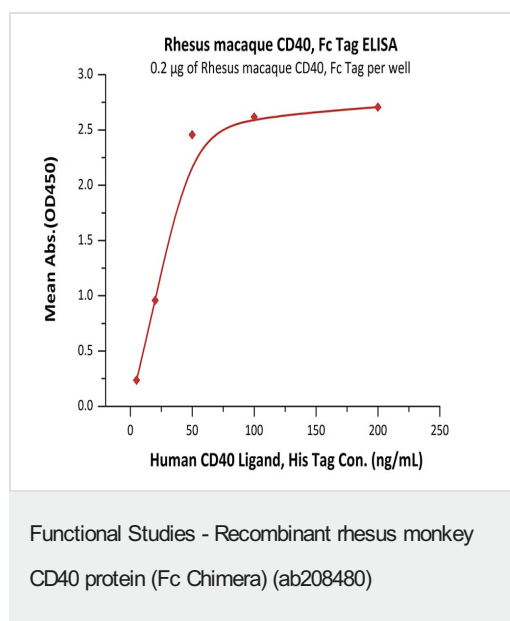
Sequence similarities

Contains 4 TNFR-Cys repeats.

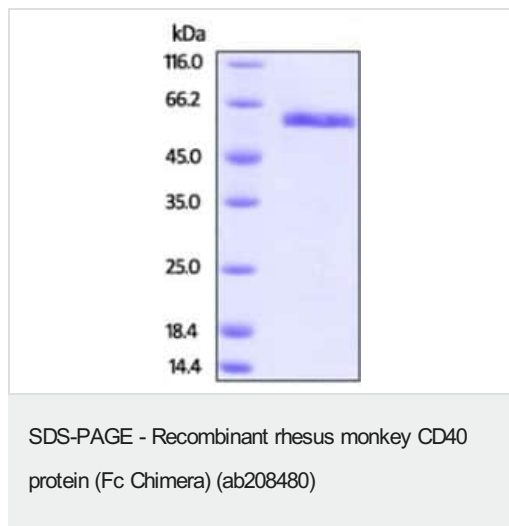
Cellular localization

Secreted and Cell membrane.

Images



Immobilized Rhesus macaque CD40, Fc Tag at 2 µg/mL (100 µL/well) can bind Human CD40 Ligand, His Tag with a linear range of 5-50 ng/mL.



SDS-PAGE analysis of reduced ab208480 stained overnight with Coomassie Blue.

Note: DTT-reduced Protein migrates as 56 kDa in SDS-PAGE.

Please note: All products are "FOR RESEARCH USE ONLY. NOT FOR USE IN DIAGNOSTIC PROCEDURES"

Our Abpromise to you: Quality guaranteed and expert technical support

- Replacement or refund for products not performing as stated on the datasheet
- Valid for 12 months from date of delivery
- Response to your inquiry within 24 hours
- We provide support in Chinese, English, French, German, Japanese and Spanish
- Extensive multi-media technical resources to help you
- We investigate all quality concerns to ensure our products perform to the highest standards

If the product does not perform as described on this datasheet, we will offer a refund or replacement. For full details of the Abpromise, please visit <https://www.abcam.com/abpromise> or contact our technical team.

Terms and conditions

- Guarantee only valid for products bought direct from Abcam or one of our authorized distributors