

# Recombinant rhesus monkey PCSK9 protein (Active) ab221401

3 Images

Description

Product name	Recombinant rhesus monkey PCSK9 protein (Active)
Biological activity	<p>Measured by its binding ability in a functional ELISA. Immobilized Human LDL R Strep Tag at 2 µg/mL (100 µL/well) can bind Rhesus macaque PCSK9 (His Tag) (ab221401) with a linear range of 1-16 ng/mL.</p> <p>Measured by its binding ability in a BLI assay. Loaded Recombinant human LDL Receptor protein (<b>ab220570</b>) on Protein A Biosensor, can bind Recombinant rhesus monkey PCSK9 protein (ab221401) with an affinity constant of 1.36 nM.</p>
Purity	> 95 % SDS-PAGE.
Endotoxin level	< 1.000 Eu/µg
Expression system	HEK 293 cells
Accession	<b>A8T666</b>
Protein length	Full length protein
Animal free	No
Nature	Recombinant
Species	Rhesus monkey
Sequence	

QEDEDGDYEELVLALRSEEDGLADAPEHGATATFHRCAK  
DPWRLPGTYVV  
VLKEETHRSQSERTARRLQAQAARRGYLTKILHVFHHLLP  
GFLVKMSGDL  
LELALKLPHVDYIEEDSSVFAQSIPWNLERITPARYRADEY  
QPPKGGSLV  
EYLLDTSIQSDHREIEGRVMVTD FESVPEEDGTRFHRQA  
SKCDSHGTHL  
AGVVSGRDAGVAKGAGLRSLRVLNCQGKGTVSGTLIGLE  
FIRKSQLVQPV  
GPLVVLLPLAGGYSRVFNAACQRLARAGVVLVTAAGNFR  
DDACLYSPASA  
PEVITVGATNAQDQPVTLTGLGTNFGRCVDL FAPGEDIIIGA  
SSDCSTCFV  
SRSGTSQAAAHVAGIAAMMLSAEPELTLAELRQRLIH FSA

KDVINEAWFP  
EDQRLVTPNLVAALPPSTHRAGWQLFCRTVWSAHSGPT  
RMATAVARCAQD  
EELLSCSSFSSRSRKRRGERIEAQGGKRVCRAHNAFGGEG  
VYAIARCCLLP  
QVNCVHTAPPAGASMGTRVHCHQQGHVLTGCSSHWE  
VEDLGTHKPPVLR  
PRGQPNQCVGHREASIHASCCHAPGLECKVKEHGIPAPQ  
EQVIVACEDGW  
TLTGCSPLPGTSHVLGAYAVDNTCVVRSRDVSTTGSTSK  
EAVAAVAICCR SRHLVQASQELQ

<b>Predicted molecular weight</b>	73 kDa including tags
<b>Amino acids</b>	31 to 692
<b>Tags</b>	His tag C-Terminus
<b>Additional sequence information</b>	Mature protein with propeptide but without signal peptide.

## Specifications

---

Our **Abpromise guarantee** covers the use of **ab221401** in the following tested applications.

The application notes include recommended starting dilutions; optimal dilutions/concentrations should be determined by the end user.

<b>Applications</b>	SDS-PAGE Functional Studies ELISA
<b>Form</b>	Lyophilized
<b>Additional notes</b>	This product is stable after storage at: -20°C to -70°C for 12 months in lyophilized state; -70°C for 3 months under sterile conditions after reconstitution.

## Preparation and Storage

---

<b>Stability and Storage</b>	Shipped at 4°C. Upon delivery aliquot. Store at -20°C or -80°C. Avoid freeze / thaw cycle. Please see notes section. pH: 7.40 Constituents: PBS, 5% Trehalose This product is an active protein and may elicit a biological response in vivo, handle with caution.
<b>Reconstitution</b>	Reconstitute with sterile deionized water to a concentration of 100 µg/ml.

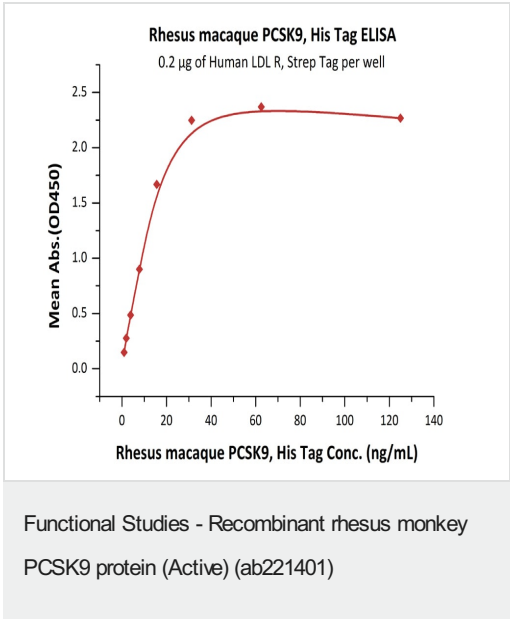
## General Info

---

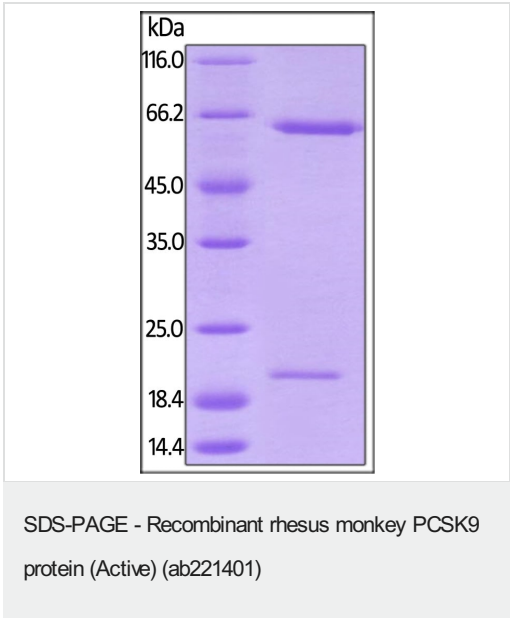
<b>Function</b>	May be implicated in the differentiation of cortical neurons and may play a role in cholesterol homeostasis.
<b>Tissue specificity</b>	Expressed in neuro-epithelioma, colon carcinoma, hepatic and pancreatic cell lines, and in Schwann cells.
<b>Involvement in disease</b>	Defects in PCSK9 are the cause of familial hypercholesterolemia 3 (FH3) [MIM:603776]. FH3 inheritance is autosomal dominant.

Sequence similarities	Belongs to the peptidase S8 family. Contains 1 peptidase S8 domain.
Post-translational modifications	The soluble zymogen undergoes autocatalytic intramolecular processing in the endoplasmic reticulum, resulting in the cleavage of its propeptide that remains associated with the secreted enzyme.
Cellular localization	Secreted.

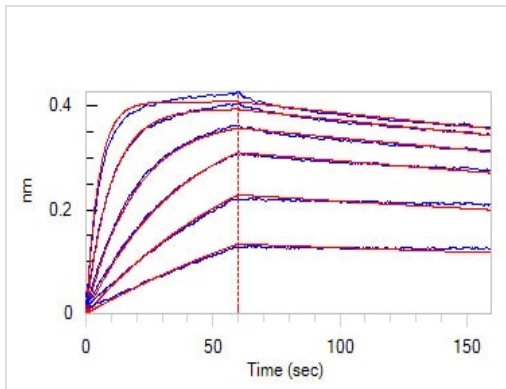
Images



Immobilized Recombinant human LDL Receptor protein (**ab220582**) at 2 µg/mL (100 µL/well) can bind Recombinant rhesus monkey PCSK9 protein (ab221401) with a linear range of 1-16 ng/mL.



SDS-PAGE of reduced ab221401 stained overnight with Coomassie Blue. The protein migrates as 21 kDa and 64 kDa under reducing conditions due to glycosylation.



Functional Studies - Recombinant rhesus monkey  
PCSK9 protein (Active) (ab221401)

Loaded Recombinant human LDL Receptor protein (**ab220570**) on Protein A Biosensor, can bind Recombinant rhesus monkey PCSK9 protein (ab221401) with an affinity constant of 1.36 nM as determined in BLI assay.

**Please note:** All products are "FOR RESEARCH USE ONLY. NOT FOR USE IN DIAGNOSTIC PROCEDURES"

### Our Abpromise to you: Quality guaranteed and expert technical support

- Replacement or refund for products not performing as stated on the datasheet
- Valid for 12 months from date of delivery
- Response to your inquiry within 24 hours
- We provide support in Chinese, English, French, German, Japanese and Spanish
- Extensive multi-media technical resources to help you
- We investigate all quality concerns to ensure our products perform to the highest standards

If the product does not perform as described on this datasheet, we will offer a refund or replacement. For full details of the Abpromise, please visit <https://www.abcam.com/abpromise> or contact our technical team.

### Terms and conditions

- Guarantee only valid for products bought direct from Abcam or one of our authorized distributors