

Product datasheet

Recombinant *S. cerevisiae* 2-deoxyglucose-6-phosphate phosphatase 1 protein (His tag) ab241228

3 Images

Description

Product name	Recombinant <i>S. cerevisiae</i> 2-deoxyglucose-6-phosphate phosphatase 1 protein (His tag)		
Purity	> 90 % SDS-PAGE.		
Expression system	Yeast		
Accession	<u>P38774</u>		
Protein length	Full length protein		
Animal free	No		
Nature	Recombinant		
Species	<i>Saccharomyces cerevisiae</i>		
Sequence	MAEFSADLCLFLDLDGTVSTTVAAEKAWTKLCYEYGVDPSELFKHSHGARTQEVLRFFPKLDDTDNKGVLALEKDIAHSYLDTVSLIPGAENLLLSLDVDTETQKKLPERKWAMTSGSPYLAFSWFETILKNVGKPKVFITGFDVKNGKPDPEGYSRARDLLRQDLQLTGKQDLKYVVFEDAPVGIKAGKAMGAITVGITSSYDKSVLFDAGADYVVCDLTQVSVVKNNENGMIQVNNPLTRA		
Predicted molecular weight	29 kDa including tags		
Amino acids	1 to 246		
Tags	His tag N-Terminus		
Additional sequence information	Strain ATCC 204508 / S288c (Baker's yeast).		
Description	Recombinant <i>S. cerevisiae</i> 2-deoxyglucose-6-phosphate phosphatase 1 protein (His tag)		

Specifications

Our **Abpromise guarantee** covers the use of **ab241228** in the following tested applications.

The application notes include recommended starting dilutions; optimal dilutions/concentrations should be determined by the end user.

Applications	SDS-PAGE
--------------	----------

	Mass Spectrometry
Mass spectrometry	LC-MS/MS
Form	Liquid

Preparation and Storage

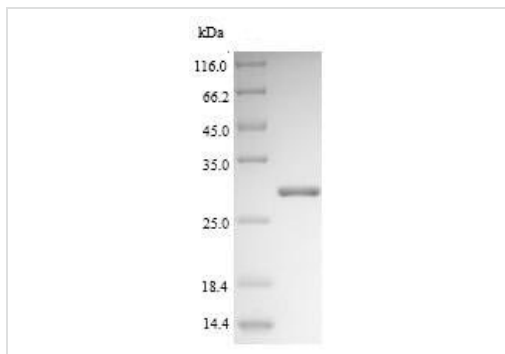
Stability and Storage

Shipped at 4°C. Store at -20°C or -80°C. Avoid freeze / thaw cycle.

pH: 7.2

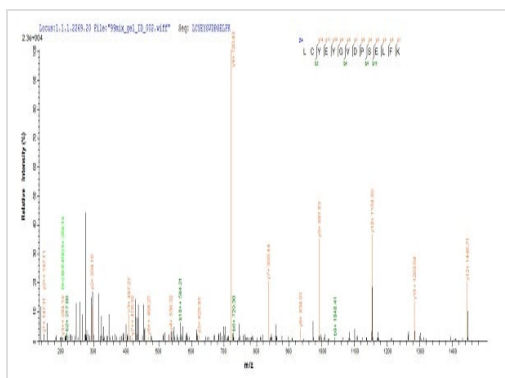
Constituents: Tris buffer, 50% Glycerol (glycerin, glycerine)

Images



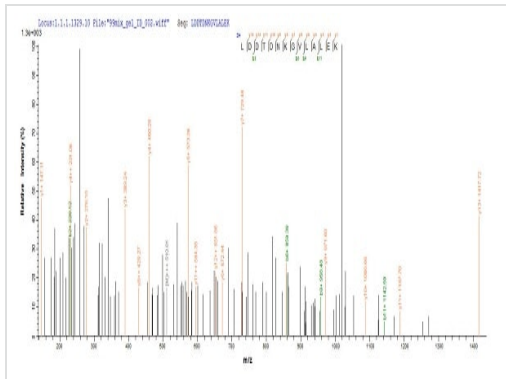
SDS-PAGE - Recombinant *S. cerevisiae* 2-deoxyglucose-6-phosphate phosphatase 1 protein (His tag) (ab241228)

(Tris-Glycine gel) Discontinuous SDS-PAGE (reduced) analysis with 5% enrichment gel and 15% separation gel of ab241228.



Mass Spectrometry - Recombinant *S. cerevisiae* 2-deoxyglucose-6-phosphate phosphatase 1 protein (His tag) (ab241228)

Based on the SEQUEST from database of Yeast host and target protein, the LC-MS/MS analysis result of ab241228 could indicate that this peptide derived from Yeast-expressed *Saccharomyces cerevisiae* (strain ATCC 204508 / S288c) (Baker's yeast) 2-deoxyglucose-6-phosphate phosphatase 1.



Mass Spectrometry - Recombinant *S. cerevisiae* 2-deoxyglucose-6-phosphate phosphatase 1 protein (His tag) (ab241228)

Based on the SEQUEST from database of Yeast host and target protein, the LC-MS/MS analysis result of ab241228 could indicate that this peptide derived from Yeast-expressed *Saccharomyces cerevisiae* (strain ATCC 204508 / S288c) (Baker's yeast) 2-deoxyglucose-6-phosphate phosphatase 1.

Please note: All products are "FOR RESEARCH USE ONLY. NOT FOR USE IN DIAGNOSTIC PROCEDURES"

Our Abpromise to you: Quality guaranteed and expert technical support

- Replacement or refund for products not performing as stated on the datasheet
- Valid for 12 months from date of delivery
- Response to your inquiry within 24 hours
- We provide support in Chinese, English, French, German, Japanese and Spanish
- Extensive multi-media technical resources to help you
- We investigate all quality concerns to ensure our products perform to the highest standards

If the product does not perform as described on this datasheet, we will offer a refund or replacement. For full details of the Abpromise, please visit <https://www.abcam.com/abpromise> or contact our technical team.

Terms and conditions

- Guarantee only valid for products bought direct from Abcam or one of our authorized distributors