

## Product datasheet

# Recombinant *S. japonicum* GST protein ab81793

[4 References](#) [1 Image](#)

### Description

---

|                                |  |
|--------------------------------|--|
| <b>Product name</b>            | Recombinant <i>S. japonicum</i> GST protein  |
| <b>Purity</b>                  | > 95 % SDS-PAGE.   |
| <b>Expression system</b>       | Escherichia coli   |
| <b>Accession</b>               | <a href="#">AAA57089.1</a>   |
| <b>Protein length</b>          | Full length protein  |
| <b>Animal free</b>             | No   |
| <b>Nature</b>                  | Recombinant  |
| <b>Species</b>                 | <i>Schistosoma japonicum</i>   |
| <b>Sequence</b>                | MSPILGYWKIKGLVQPTRLLEYLEEKYEEHLYERDEGDK<br>WRNKKFELGL<br>EFPNLPYYIDGDVKLTQSMAIRYADKHNMLGGCPKERAEL<br>SMLEGAVL<br>DIRYGVSRIAYSKDFETLKVDFLSKLPEMLKMFEDRLCHKT<br>YLNQDHSVTH<br>PDFMLYDALDVVLYMDPMCLDAFPKLVCFKKRIEAIQIDK<br>YLKSSKYIA<br>WPLQGQWQATFGGGDHPPKSDLVPRGSPGIHRD |
| <b>Actual molecular weight</b> | 27 kDa   |
| <b>Amino acids</b>             | 1 to 232   |
| <b>Description</b>             | Recombinant <i>S. japonicum</i> GST protein  |

### Specifications

---

Our [Abpromise guarantee](#) covers the use of **ab81793** in the following tested applications.

The application notes include recommended starting dilutions; optimal dilutions/concentrations should be determined by the end user.

|                     |                                |
|---------------------|--------------------------------|
| <b>Applications</b> | SDS-PAGE<br>Functional Studies |
| <b>Form</b>         | Liquid                         |

### Preparation and Storage

---

## Stability and Storage

Shipped on dry ice. Upon delivery aliquot and store at -80°C. Avoid freeze / thaw cycles.

pH: 7.9

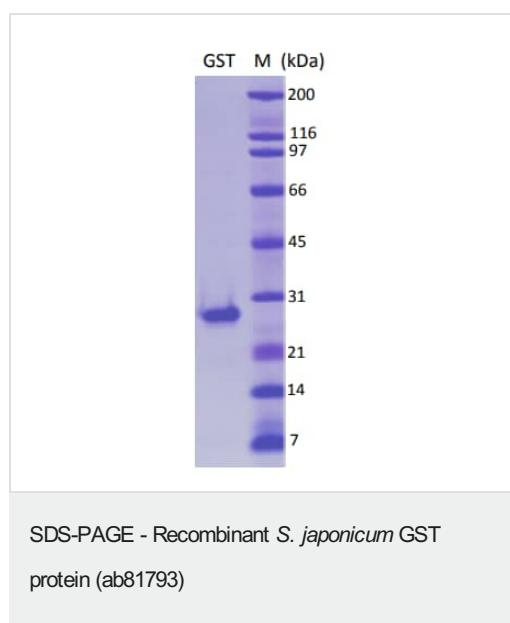
Constituents: 0.75% Potassium chloride, 0.0154% DTT, 0.316% Tris HCl, 0.00584% EDTA, 20% Glycerol (glycerin, glycerine)

## General Info

### Relevance

GST (Glutathione S-Transferase) is a 26kDa protein encoded by the parasitic helminth *Schistosoma japonicum* and widely used in the pGEX family of GST plasmid expression vectors as a fusion protein with foreign proteins.

## Images



**Please note:** All products are "FOR RESEARCH USE ONLY. NOT FOR USE IN DIAGNOSTIC PROCEDURES"

## Our Abpromise to you: Quality guaranteed and expert technical support

- Replacement or refund for products not performing as stated on the datasheet
- Valid for 12 months from date of delivery
- Response to your inquiry within 24 hours
- We provide support in Chinese, English, French, German, Japanese and Spanish
- Extensive multi-media technical resources to help you
- We investigate all quality concerns to ensure our products perform to the highest standards

If the product does not perform as described on this datasheet, we will offer a refund or replacement. For full details of the Abpromise, please visit <https://www.abcam.com/abpromise> or contact our technical team.

## Terms and conditions

---

- Guarantee only valid for products bought direct from Abcam or one of our authorized distributors