

## Product datasheet

# Recombinant *S. japonicum* GST protein (Active) ab89494

[1 References](#) [1 Image](#)

### Description

<b>Product name</b>	Recombinant <i>S. japonicum</i> GST protein (Active)
<b>Biological activity</b>	Specific activity is > 10 units/mg, and is defined as the amount of enzyme that conjugate 1.0 umole of 1-chloro-2,4-dinitrobenzene (CDNB) with reduced glutathione per minute at pH 6.5 at 25°C
<b>Purity</b>	> 95 % SDS-PAGE. ab89494 is purified using conventional chromatography techniques.
<b>Expression system</b>	Escherichia coli
<b>Accession</b>	<b><u>P08515</u></b>
<b>Protein length</b>	Full length protein
<b>Animal free</b>	No
<b>Nature</b>	Recombinant
<b>Species</b>	Schistosoma japonicum
<b>Sequence</b>	MGSSHHHHHH SSGLVPRGSH MSPILGYWKI KGLVQPTRL L LEYLEEKYEE HLYERDEGDK WRNKKFELGL EFPNLPYYID GDVKLTQSMA IIRYADKHN MLGGCPKERA EISMLEGAVL DIRYGVSRIA YSKDFETLKV DFLSKLPEML KMFEDRLCHK TYLNGDHVTH PDFMLYDALD VVLYMDPMCL DAFPKLVCFK KRIAIPQID KYLKSSKYIA WPLQGWQATF GGGDHPPKSD LVPR
<b>Predicted molecular weight</b>	28 kDa
<b>Amino acids</b>	1 to 218
<b>Tags</b>	His tag N-Terminus
<b>Additional sequence information</b>	(AAB59203.1)
<b>Description</b>	Recombinant <i>S. japonicum</i> GST protein (Active)

### Specifications

Our **Abpromise guarantee** covers the use of **ab89494** in the following tested applications.

The application notes include recommended starting dilutions; optimal dilutions/concentrations should be determined by the end user.

<b>Applications</b>	Functional Studies SDS-PAGE
<b>Form</b>	Liquid
<b>Additional notes</b>	MW confirmed by MALDI-TOF.

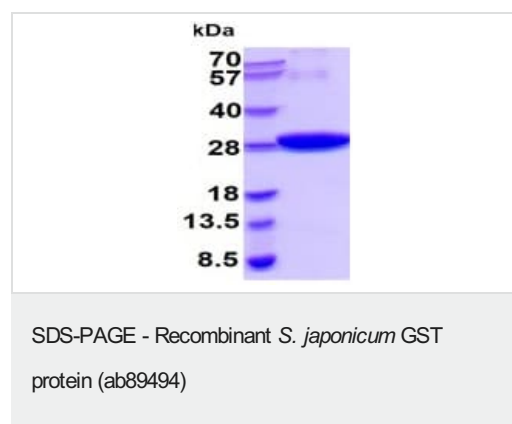
## Preparation and Storage

<b>Stability and Storage</b>	Shipped at 4°C. Store at +4°C short term (1-2 weeks). Upon delivery aliquot. Store at -20°C or -80°C. Avoid freeze / thaw cycle.  pH: 7.40 Constituents: PBS, 10% Glycerol (glycerin, glycerine)  This product is an active protein and may elicit a biological response in vivo, handle with caution.
------------------------------	---

## General Info

<b>Relevance</b>	GST (Glutathione S-Transferase) is a 26kDa protein encoded by the parasitic helminth <i>Schistosoma japonicum</i> and widely used in the pGEX family of GST plasmid expression vectors as a fusion protein with foreign proteins.
------------------	---

## Images



3ug of reduced ab89494 on SDS-PAGE, stained with Coomassie Blue.

**Please note:** All products are "FOR RESEARCH USE ONLY. NOT FOR USE IN DIAGNOSTIC PROCEDURES"

## Our Abpromise to you: Quality guaranteed and expert technical support

- Replacement or refund for products not performing as stated on the datasheet
- Valid for 12 months from date of delivery
- Response to your inquiry within 24 hours
- We provide support in Chinese, English, French, German, Japanese and Spanish
- Extensive multi-media technical resources to help you
- We investigate all quality concerns to ensure our products perform to the highest standards

If the product does not perform as described on this datasheet, we will offer a refund or replacement. For full details of the Abpromise, please visit <https://www.abcam.com/abpromise> or contact our technical team.

#### **Terms and conditions**

---

- Guarantee only valid for products bought direct from Abcam or one of our authorized distributors