

Product datasheet

Recombinant Sheep IL-6 protein (Tagged) ab235819

[1 Image](#)

Description

Product name	Recombinant Sheep IL-6 protein (Tagged)
Purity	> 90 % SDS-PAGE.
Expression system	Escherichia coli
Accession	<u>P29455</u>
Protein length	Full length protein
Animal free	No
Nature	Recombinant
Species	Sheep
Sequence	GPLGEDFKNDTTPSRLLLTTPTEKTEALIKHIVDKISAIRKEIC EKNDECE NSKETLAENKCLKPKMEEKDGCFQSGFNQAICLIKTTAGLL EYQIYLDLFL QNEFEGNQETVMELQSSIRTLIQLKEKIAGLITTPATHDML EKMQSSN EWVKNKAKVIIILRSLENFLQFSLRAIRMK
Predicted molecular weight	48 kDa including tags
Amino acids	30 to 208
Tags	GST tag N-Terminus
Additional sequence information	This product is the mature full length protein from aa 30 to 208. The signal peptide is not included.

Specifications

Our **Abpromise guarantee** covers the use of **ab235819** in the following tested applications.

The application notes include recommended starting dilutions; optimal dilutions/concentrations should be determined by the end user.

Applications SDS-PAGE

Form Liquid

Preparation and Storage

Stability and Storage Shipped at 4°C. Store at -20°C or -80°C. Avoid freeze / thaw cycle.
pH: 7.2

Constituents: Tris buffer, 50% Glycerol (glycerin, glycerine)

General Info

Function

Cytokine with a wide variety of biological functions. It is a potent inducer of the acute phase response. Plays an essential role in the final differentiation of B-cells into Ig-secreting cells. Involved in lymphocyte and monocyte differentiation. It induces myeloma and plasmacytoma growth and induces nerve cells differentiation. Acts on B-cells, T-cells, hepatocytes, hematopoietic progenitor cells and cells of the CNS. Also acts as a myokine. It is discharged into the bloodstream after muscle contraction and acts to increase the breakdown of fats and to improve insulin resistance.

Involvement in disease

Genetic variations in IL6 are associated with susceptibility to rheumatoid arthritis systemic juvenile (RASJ) [MIM:604302]. An inflammatory articular disorder with systemic-onset beginning before the age of 16. It represents a subgroup of juvenile arthritis associated with severe extraarticular features and occasionally fatal complications. During active phases of the disorder, patients display a typical daily spiking fever, an evanescent macular rash, lymphadenopathy, hepatosplenomegaly, serositis, myalgia and arthritis.

Note=A IL6 promoter polymorphism is associated with a lifetime risk of development of Kaposi sarcoma in HIV-infected men.

Sequence similarities

Belongs to the IL-6 superfamily.

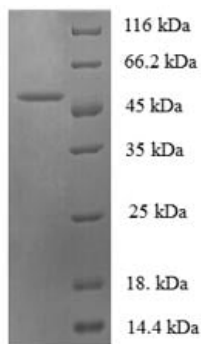
Post-translational modifications

N- and O-glycosylated.

Cellular localization

Secreted.

Images



SDS-PAGE - Recombinant Sheep IL-6 protein
(Tagged) (ab235819)

(Tris-Glycine gel) Discontinuous SDS-PAGE (reduced) analysis with 5% enrichment gel and 15% separation gel of ab235819.

Please note: All products are "FOR RESEARCH USE ONLY. NOT FOR USE IN DIAGNOSTIC PROCEDURES"

Our Promise to you: Quality guaranteed and expert technical support

- Replacement or refund for products not performing as stated on the datasheet

- Valid for 12 months from date of delivery
- Response to your inquiry within 24 hours
- We provide support in Chinese, English, French, German, Japanese and Spanish
- Extensive multi-media technical resources to help you
- We investigate all quality concerns to ensure our products perform to the highest standards

If the product does not perform as described on this datasheet, we will offer a refund or replacement. For full details of the Abpromise, please visit <https://www.abcam.com/abpromise> or contact our technical team.

Terms and conditions

- Guarantee only valid for products bought direct from Abcam or one of our authorized distributors