

Product datasheet

Recombinant Tobacco Osmotin protein (His tag)
ab224842

3 Images

Description

Product name	Recombinant Tobacco Osmotin protein (His tag)		
Purity	> 90 % SDS-PAGE.		
Expression system	Escherichia coli		
Accession	P14170		
Protein length	Full length protein		
Animal free	No		
Nature	Recombinant		
Species	Tobacco		
Sequence	ATIEVRNNCPYTVWAASTPIGGRRRLDRGQTWWINAPRGT KMARVWGRTN CNFNAAGRGTCQTGDCGGVLQCTGWGKPPNTLAEYALD QFSGLD FWDISL VDGFNIPMTFAPTNPSSGGKCHAIHCTANINGECPREL RVP GGC NNPCTTF GGQQYCCTQGPGPTFFSKFFKQRCPDAYSYPQDDPTS TFTCPGGSTNYR VIFCPNGQAHPNFLEMPGSDEVAK		
Predicted molecular weight	40 kDa including tags		
Amino acids	22 to 246		
Tags	His tag N-Terminus		
Additional sequence information	This product is the mature full length protein from aa 22 to 246 with 6xHis-SUMO tag at the N-terminus. The signal peptide is not included.		

Specifications

Our **Abpromise guarantee** covers the use of **ab224842** in the following tested applications.

The application notes include recommended starting dilutions; optimal dilutions/concentrations should be determined by the end user.

Applications	Mass Spectrometry SDS-PAGE
Mass spectrometry	LC-MS/MS

Form

Liquid

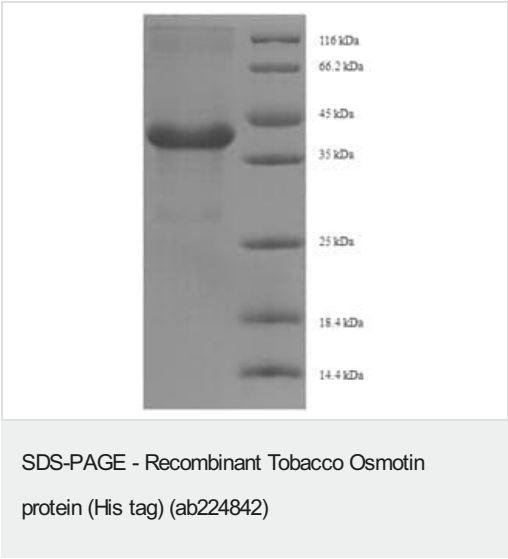
Preparation and Storage

Stability and Storage

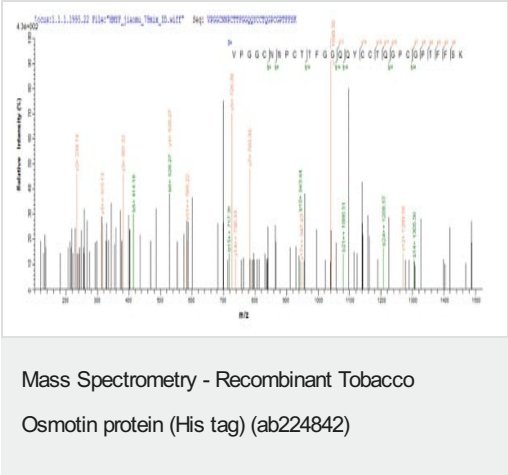
Shipped at 4°C. Upon delivery aliquot. Store at -20°C or -80°C. Avoid freeze / thaw cycle.
pH: 7.2
Constituents: 50% Glycerol (glycerin, glycerine), Tris buffer

General Info

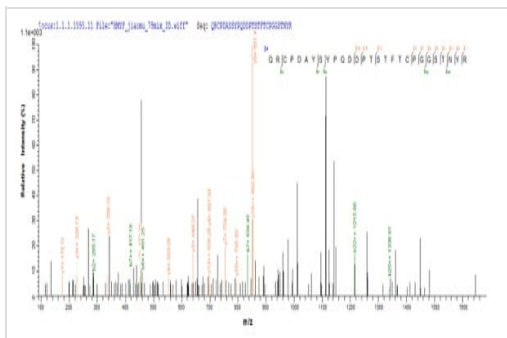
Images



(Tris-Glycine gel) Discontinuous SDS-PAGE (reduced) analysis of ab224842 with 5% enrichment gel and 15% separation gel.



Based on the SEQUEST from database of E.coli host and target protein, the LC-MS/MS analysis result of ab224842 could indicate that this peptide derived from E.coli-expressed tobacco Osmotin protein.



Mass Spectrometry - Recombinant Tobacco
Osmotin protein (His tag) (ab224842)

Based on the SEQUEST from database of E.coli host and target protein, the LC-MS/MS analysis result of ab224842 could indicate that this peptide derived from E.coli-expressed tobacco Osmotin protein.

Please note: All products are "FOR RESEARCH USE ONLY. NOT FOR USE IN DIAGNOSTIC PROCEDURES"

Our Abpromise to you: Quality guaranteed and expert technical support

- Replacement or refund for products not performing as stated on the datasheet
- Valid for 12 months from date of delivery
- Response to your inquiry within 24 hours
- We provide support in Chinese, English, French, German, Japanese and Spanish
- Extensive multi-media technical resources to help you
- We investigate all quality concerns to ensure our products perform to the highest standards

If the product does not perform as described on this datasheet, we will offer a refund or replacement. For full details of the Abpromise, please visit <https://www.abcam.com/abpromise> or contact our technical team.

Terms and conditions

- Guarantee only valid for products bought direct from Abcam or one of our authorized distributors