

Product datasheet

Recombinant vacA protein (His tag) ab225655

3 Images

Description

| | |
|-----------------------------------|--|
| Product name | Recombinant vacA protein (His tag) |
| Purity | > 90 % SDS-PAGE. |
| Expression system | Escherichia coli |
| Accession | <u>P55981</u> |
| Protein length | Protein fragment |
| Animal free | No |
| Nature | Recombinant |
| Species | Helicobacter pylori |
| Sequence | TTVIIPAVGGIATGAAVGTVSGLLGWGLKQAEAEANKTPDK PDKVWRIQA GKGFNEFPNKEYDLYRLLSSKIDGGWDWGNAATHYWVK GGQWNKLEVDM KDAVGTYNLSGLRNFTGGDLVNMQKATLRLGQFNGNSF TSYKDSADRTT RVDFNAKNILIDNFLEINNRVGSAGRKASSTVLTQASEGI TSSKNAEI SLYDGATLN |
| Predicted molecular weight | 27 kDa including tags |
| Amino acids | 37 to 245 |
| Tags | His tag N-Terminus |

Specifications

Our **Abpromise guarantee** covers the use of **ab225655** in the following tested applications.

The application notes include recommended starting dilutions; optimal dilutions/concentrations should be determined by the end user.

| | |
|---------------------|-------------------------------|
| Applications | SDS-PAGE Mass Spectrometry |
| Form | Liquid |

Preparation and Storage

Stability and Storage

Shipped at 4°C. Upon delivery aliquot. Store at -20°C or -80°C. Avoid freeze / thaw cycle.

pH: 7.20

Constituents: 50% Glycerol (glycerin, glycerine), Tris buffer

General Info

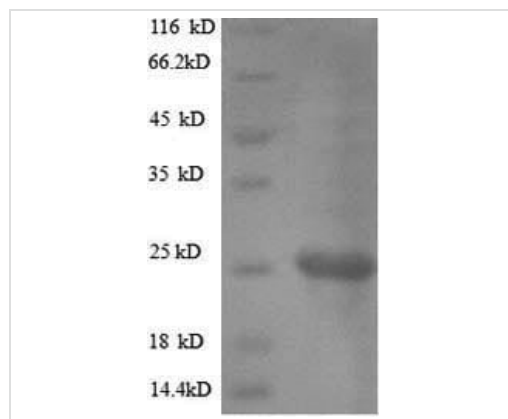
Relevance

Induces vacuolation of eukaryotic cells. Causes ulceration and gastric lesions.

Cellular localization

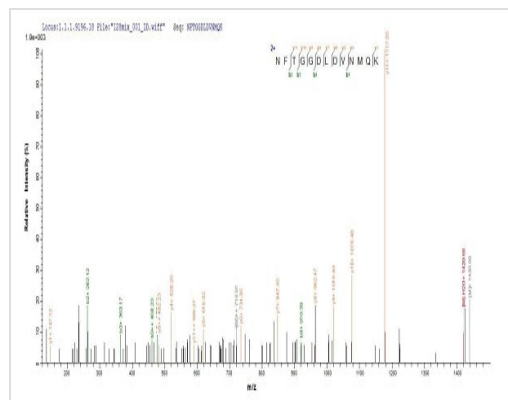
Cell Membrane and Secreted

Images



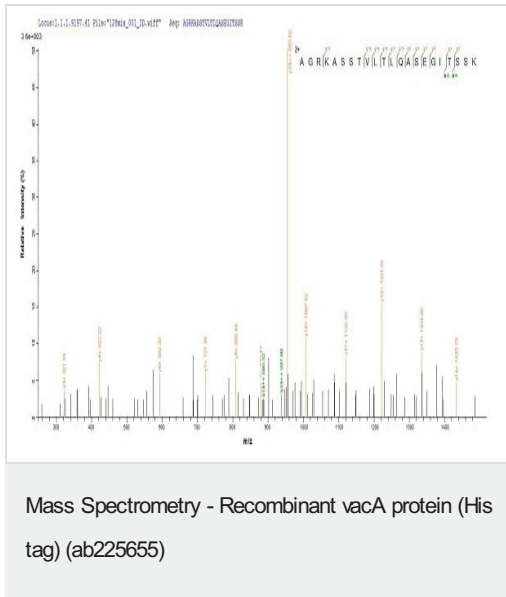
SDS-PAGE - Recombinant vacA protein (His tag)
(ab225655)

Discontinuous SDS-PAGE(Tris-Glycine gel) (reduced) with 5% enrichment gel and 15% separation gel.



Mass Spectrometry - Recombinant vacA protein (His tag)
(ab225655)

Based on the SEQUEST from database of E.coli host and target protein, the LC-MS/MS Analysis result of ab225655 could indicate that this peptide derived from E.coli-expressed *Helicobacter pylori* (strain ATCC 700392 / 26695) (*Campylobacter pylori*) vacA.



Based on the SEQUEST from database of E.coli host and target protein, the LC-MS/MS Analysis result of ab225655 could indicate that this peptide derived from E.coli-expressed Helicobacter pylori (strain ATCC 700392 / 26695) (Campylobacter pylori) vacA.

Please note: All products are "FOR RESEARCH USE ONLY. NOT FOR USE IN DIAGNOSTIC PROCEDURES"

Our Abpromise to you: Quality guaranteed and expert technical support

- Replacement or refund for products not performing as stated on the datasheet
- Valid for 12 months from date of delivery
- Response to your inquiry within 24 hours
- We provide support in Chinese, English, French, German, Japanese and Spanish
- Extensive multi-media technical resources to help you
- We investigate all quality concerns to ensure our products perform to the highest standards

If the product does not perform as described on this datasheet, we will offer a refund or replacement. For full details of the Abpromise, please visit <https://www.abcam.com/abpromise> or contact our technical team.

Terms and conditions

- Guarantee only valid for products bought direct from Abcam or one of our authorized distributors