

Product datasheet

Recombinant *X. laevis* PKC alpha protein ab60839

[5 Images](#)

Description

Product name	Recombinant <i>X. laevis</i> PKC alpha protein
Purity	> 80 % Densitometry. Affinity purified.
Expression system	Baculovirus infected Sf9 cells
Protein length	Full length protein
Animal free	No
Nature	Recombinant
Species	<i>Xenopus laevis</i>
Description	Recombinant <i>X. laevis</i> PKC alpha protein

Specifications

Our **Abpromise guarantee** covers the use of **ab60839** in the following tested applications.

The application notes include recommended starting dilutions; optimal dilutions/concentrations should be determined by the end user.

Applications	Functional Studies SDS-PAGE
Form	Liquid
Additional notes	ab204856 (CREB peptide) can be utilized as a substrate for assessing kinase activity

Preparation and Storage

Stability and Storage	Shipped on dry ice. Upon delivery aliquot and store at -80°C. Avoid freeze / thaw cycles. pH: 7.50 Constituents: 0.0038% EGTA, 0.00174% PMSF, 0.00385% DTT, 0.79% Tris HCl, 0.00292% EDTA, 25% Glycerol (glycerin, glycerine), 0.87% Sodium chloride This product is an active protein and may elicit a biological response in vivo, handle with caution.
------------------------------	--

General Info

Function	This is a calcium-activated, phospholipid-dependent, serine- and threonine-specific enzyme. May
-----------------	---

play a role in cell motility by phosphorylating CSPG4.

PKC is activated by diacylglycerol which in turn phosphorylates a range of cellular proteins. PKC also serves as the receptor for phorbol esters, a class of tumor promoters.

Sequence similarities

Belongs to the protein kinase superfamily. AGC Ser/Thr protein kinase family. PKC subfamily.

Contains 1 AGC-kinase C-terminal domain.

Contains 1 C2 domain.

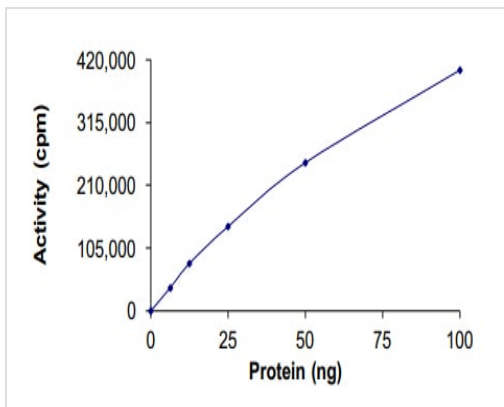
Contains 2 phorbol-ester/DAG-type zinc fingers.

Contains 1 protein kinase domain.

Cellular localization

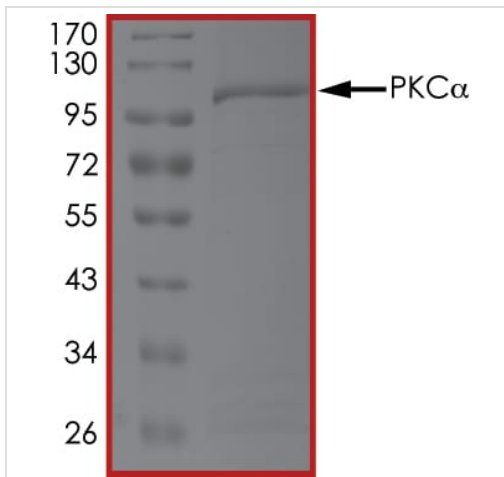
Cytoplasm. Cell membrane. Nucleus.

Images



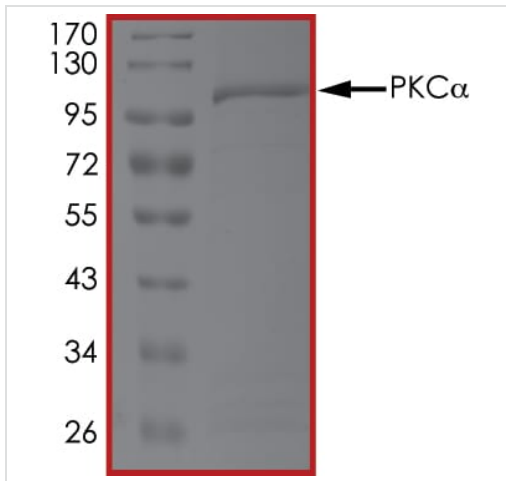
The specific activity of PKC alpha (ab60839) was determined to be 250 nmol/min/mg as per activity assay protocol

Functional Studies - Recombinant *X. laevis* PKC alpha protein (ab60839)



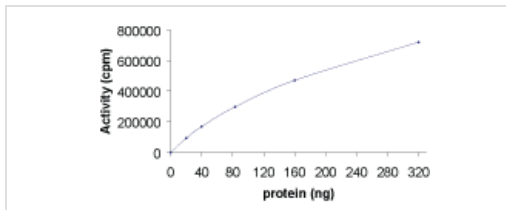
SDS PAGE analysis of ab60839

SDS-PAGE - Recombinant *X. laevis* PKC alpha protein (ab60839)



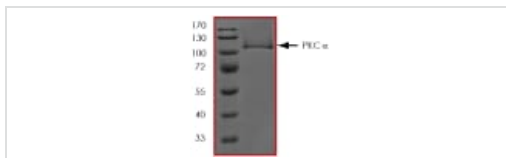
SDS PAGE analysis of ab60839

SDS-PAGE - Recombinant *X. laevis* PKC alpha protein (ab60839)



Sample Kinase Activity Plot.

Functional Studies - Recombinant *X. laevis* PKC alpha protein (ab60839)



ab60839 on SDS-PAGE, MW ~103 kDa.

SDS-PAGE - Recombinant *X. laevis* PKC alpha protein (ab60839)

Please note: All products are "FOR RESEARCH USE ONLY. NOT FOR USE IN DIAGNOSTIC PROCEDURES"

Our Abpromise to you: Quality guaranteed and expert technical support

- Replacement or refund for products not performing as stated on the datasheet
- Valid for 12 months from date of delivery
- Response to your inquiry within 24 hours
- We provide support in Chinese, English, French, German, Japanese and Spanish

- Extensive multi-media technical resources to help you
- We investigate all quality concerns to ensure our products perform to the highest standards

If the product does not perform as described on this datasheet, we will offer a refund or replacement. For full details of the Abpromise, please visit <https://www.abcam.com/abpromise> or contact our technical team.

Terms and conditions

- Guarantee only valid for products bought direct from Abcam or one of our authorized distributors