

# InstantBlue® Coomassie Protein Stain (ISB1L) ab119211

★★★★★ [4 Abreviews](#) [492 References](#) [3 Images](#)

## Overview

---

**Product name** InstantBlue® Coomassie Protein Stain (ISB1L)

**General notes** InstantBlue® is a ready to use Coomassie protein stain for polyacrylamide gels. Its unique mechanism of action stains proteins in 15 minutes, while leaving a clear background eliminating the need to fix, wash or destain. Formulated for safe use and easy disposal, it's ready to use straight out of the bottle and comes in convenient premixed one liter bottles.

### Why InstantBlue® Protein Stain?

There is no need to wash, fix, microwave or destain gels when using InstantBlue™. Homemade stains and premade solutions require several or all of these extra steps. InstantBlue uses a simple one step protocol.

The unique patented mechanism for rapid Coomassie blue staining of protein gels begins in moments, and results are achieved within 15 minutes. Some premade and traditional homemade Coomassie R-250 protein stains can take three hours or more to fully stain gels, and then require destaining typically overnight.

Unparalleled sensitivity allows protein levels as low as 5ng per band to be detected (BSA) when staining overnight. This is thanks to InstantBlue's protein specific staining, which gives a clear background, improving the signal / noise ratio of the stain. Despite the staining power, gels can be left in InstantBlue for weeks and still come out with a crystal clear background, all without the need for destaining or protein stain remover.

The nontoxic formula is sink disposable and thanks to its methanol free composition will not shrink gels. Other stains require solvent disposal procedures and can require microwaving, which produces dangerous fumes. The effective staining and safe composition of InstantBlue means that there's no need for microwaving, solvent disposal, or fume hoods.

InstantBlue will stain at least 40 mini gels per bottle, boasting economical staining with only 25ml per mini gel. As a result, this allows you to use less protein staining solution when compared to 50–100ml of stain per gel for homemade solutions and some premixed solutions.

Fully compatible with mass spectrometry, gels can be destained using standard procedures. The protein staining solution's acetic acid free formulation means it will not methylate or acetylate protein during the protein staining protocol.

### Key Benefits

**Ultra fast staining** – Results in 15 minutes or less

**One step procedure** – No washing, fixing, microwaving or destaining

**High sensitivity** – 5ng bands detectable

**Clear background** – High signal / noise ratio

**Flexible** – No overstaining

**Reliable** – Stringent batch to batch consistency

**Efficient** – Only 25ml per gel

**Safe composition** – Nontoxic; no fume hood or solvent disposal required

**Methanol free** – No gel shrinkage or protein methylation

**Acetic acid free** – No protein acetylation

**Mass spectrometry compatible** – Destainable. No residual methylation or acetylation

This product is manufactured by Expedeon, an Abcam company. Expedeon product code ISB1L was previously called InstantBlue Protein Stain 1 L and is the same as the 1000 ml size of this product.

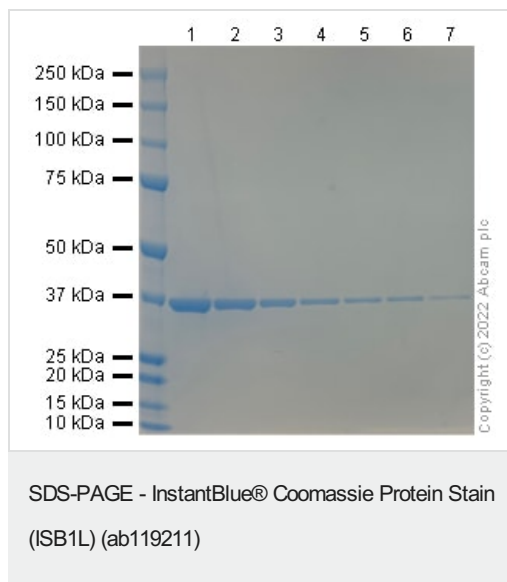
Manufactured under patent numbers : US 12/226,797 ; SG 201103010-3 ; SG 200807953-5 ; JP 2009-507182 ; IN 5722/CHENP/2008 ; GB 0608377.8 ; EP 10187154.9; EP 07733647.7 ; CN 200780021434.8 ; CA 2,649,835 ; AU 2007245443

*INSTANTBLUE is a registered trademark of Abcam in the US and an unregistered trademark elsewhere*

## Properties

<b>Form</b>	Liquid
<b>Storage instructions</b>	Shipped at Room Temperature. Store at +4°C.
<b>Storage buffer</b>	Constituents: 0.56% Ethanol, 15.19% Phosphoric acid

## Images



**Lane 1:** Recombinant Human GAPDH protein ([ab77109](#)) at 3 ug + Instant Blue stain (ab119211)

**Lane 2:** Recombinant Human GAPDH protein ([ab77109](#)) at 2 ug + Instant Blue stain (ab119211)

**Lane 3:** Recombinant Human GAPDH protein ([ab77109](#)) at 1 ug + Instant Blue stain (ab119211)

**Lane 4:** Recombinant Human GAPDH protein ([ab77109](#)) at 0.5 ug + Instant Blue stain (ab119211)

**Lane 5:** Recombinant Human GAPDH protein ([ab77109](#)) at 0.3 ug + Instant Blue stain (ab119211)

**Lane 6:** Recombinant Human GAPDH protein ([ab77109](#)) at 0.2 ug + Instant Blue stain (ab119211)

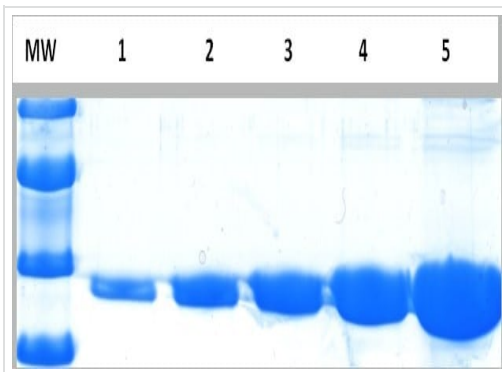
**Lane 7:** Recombinant Human GAPDH protein ([ab77109](#)) at 0.1 ug + Instant Blue stain (ab119211)

**Predicted band size:** 36 kDa

**Observed band size:** 36 kDa

SDS-PAGE image showing molecular weight marker (MW) and Recombinant Human GAPDH protein in lanes 1-7 stained with

InstantBlue. The gel was stained for 30 minutes and then rinsed once with distilled water to remove the stain.

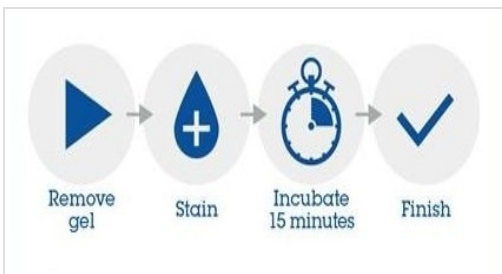


SDS-PAGE image showing molecular weight marker (MW) and His-tag recombinant protein fractions purified in Ni-NTA resin in lanes 1-5 stained with InstantBlue. InstantBlue was easy to handle and use - just pour a small amount onto your gel and within 10 minutes you can see the protein bands! No methanol and glacial acetic acid - no smell!

Western blot - InstantBlue® Coomassie Protein

Stain (ISB1L) (ab119211)

This image is courtesy of an anonymous abreview.



Western blot - InstantBlue® Coomassie Protein

Stain (ISB1L) (ab119211)

**Please note:** All products are "FOR RESEARCH USE ONLY. NOT FOR USE IN DIAGNOSTIC PROCEDURES"

### Our Abpromise to you: Quality guaranteed and expert technical support

- Replacement or refund for products not performing as stated on the datasheet
- Valid for 12 months from date of delivery
- Response to your inquiry within 24 hours
- We provide support in Chinese, English, French, German, Japanese and Spanish
- Extensive multi-media technical resources to help you
- We investigate all quality concerns to ensure our products perform to the highest standards

If the product does not perform as described on this datasheet, we will offer a refund or replacement. For full details of the Abpromise, please visit <https://www.abcam.com/abpromise> or contact our technical team.

### Terms and conditions

- Guarantee only valid for products bought direct from Abcam or one of our authorized distributors