

## Product datasheet

# Pepsin Solution (Antigen Retrieval) ab64201

1 Image

### Overview

---

<b>Product name</b>	Pepsin Solution (Antigen Retrieval)
<b>Tested applications</b>	<b>Suitable for:</b> IHC-P
<b>General notes</b>	<p>Pepsin for protease-induced antigen retrieval (PIER) during IHC procedures (ab64201). Ready-to-use formulation. Tris buffer pH 2.0</p> <p><b>Staining Protocol:</b></p> <ul style="list-style-type: none"><li>Incubate tissue section for 10 minutes at 37°C.</li><li>Rinse and proceed with immunostaining.</li></ul> <p>Pepsin is a commonly used digestive enzyme for immunohistochemical procedures.</p> <p><b>Other products for IHC</b></p> <p>Other enzymes for antigen retrieval include: <b><u><a href="#">Proteinase K Antigen Retrieval Solution ab64220</a></u></b> and <b><u><a href="#">Trypsin Antigen Retrieval Kit ab259256</a></u></b>.</p> <p>Find more kits and reagents for antigen retrieval, blocking, signal amplification, visualization, counterstaining, and mounting in the <b><u><a href="#">IHC kits and reagents guide</a></u></b>.</p>

### Properties

---

<b>Form</b>	Liquid
<b>Storage instructions</b>	Store at +4°C.
<b>Storage buffer</b>	<p>pH: 1.90</p> <p>Preservative: 0.5% Sodium azide</p> <p>Constituents: 0.25% Pepsin, 0.22% Polyoxyethylene lauryl ether, 1.5% Hydrochloric acid</p>
<b>Reagent notes</b>	Pepsin is a commonly used digestive enzyme for immunohistochemical procedures.
<b>Function</b>	Shows particularly broad specificity; although bonds involving phenylalanine and leucine are preferred, many others are also cleaved to some extent.
<b>Sequence similarities</b>	Belongs to the peptidase A1 family.
<b>Cellular localization</b>	Secreted.
<b>Cellular localization</b>	Secreted.

### Applications

---

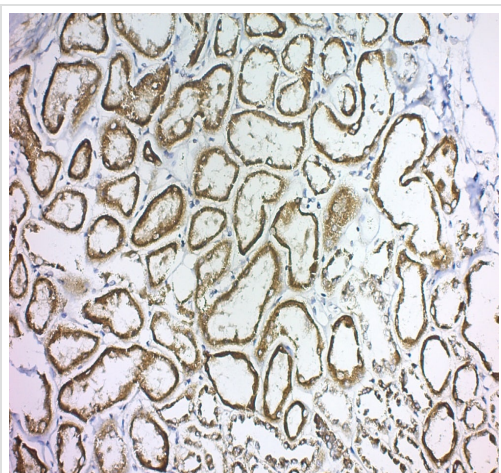
## The Abpromise guarantee

Our **Abpromise guarantee** covers the use of ab64201 in the following tested applications.

The application notes include recommended starting dilutions; optimal dilutions/concentrations should be determined by the end user.

Application	Abreviews	Notes
IHC-P		Use at an assay dependent concentration.

## Images



ab64201 Pepsin Solution used with Laminin on Human Kidney

Immunohistochemistry (Formalin/PFA-fixed paraffin-embedded sections) - Pepsin Solution (ab64201)

**Please note:** All products are "FOR RESEARCH USE ONLY. NOT FOR USE IN DIAGNOSTIC PROCEDURES"

## Our Abpromise to you: Quality guaranteed and expert technical support

- Replacement or refund for products not performing as stated on the datasheet
- Valid for 12 months from date of delivery
- Response to your inquiry within 24 hours
- We provide support in Chinese, English, French, German, Japanese and Spanish
- Extensive multi-media technical resources to help you
- We investigate all quality concerns to ensure our products perform to the highest standards

If the product does not perform as described on this datasheet, we will offer a refund or replacement. For full details of the Abpromise, please visit <https://www.abcam.com/abpromise> or contact our technical team.

## Terms and conditions

- Guarantee only valid for products bought direct from Abcam or one of our authorized distributors