

Product datasheet

Prestained Protein Ladder – Extra broad molecular weight (6.5 – 270 kDa) ab234592

[1 References](#) [1 Image](#)

Overview

Product name	Prestained Protein Ladder – Extra broad molecular weight (6.5 – 270 kDa)
Tested applications	Suitable for: WB, SDS-PAGE
General notes	<p>Prestained Protein Ladder ab234592 is a three-color protein standard with 10 pre-stained proteins covering a range of MW from 6.5-270 kDa. This prestained protein ladder allows you to monitor protein separation during SDS-polyacrylamide gel electrophoresis and verifying Western transfer efficiency on membranes (PVDF, nylon, or nitrocellulose) and for approximating the size of proteins.</p> <p>Key product features:</p> <p>Broad range: 6.5-270 kDa</p> <p>Ready to use: The ladder is supplied in the gel loading buffer and is ready to use.</p> <p>Easily identified: Proteins are covalently coupled with a blue chromophore except three reference bands (two orange bands at 30 kDa and 270 kDa and one green band at 52 kDa). 3 µl or 5 µl per loading for clear visualization during electrophoresis on 15-well or 10-well mini-gel, respectively. 2.5 µl per well for general Western transferring.</p> <p>Review other protein ladders in the unstained and prestained protein ladder guide.</p>

Properties

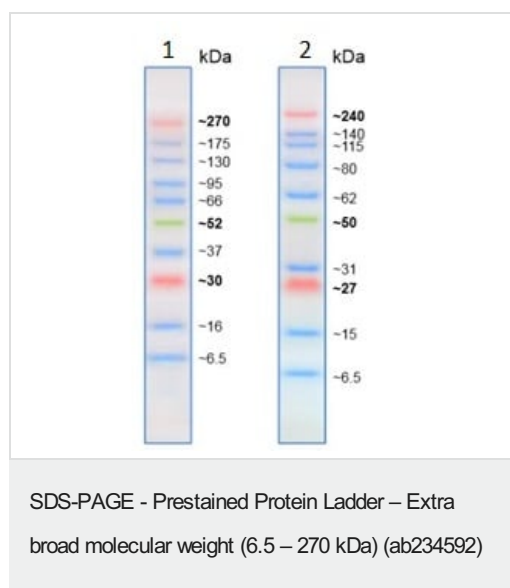
Form	Liquid
Storage instructions	Shipped at 4°C. Store at +4°C short term (1-2 weeks). Store at -20°C long term.
Storage buffer	pH: 7.50 Preservative: 0.01% Sodium azide Constituents: 1.37% Tris phosphate, 0.03% EDTA, 2% Sodium lauryl sulfate, 0.15% DTT, 33% Glycerol

Applications

The Abpromise guarantee Our **Abpromise guarantee** covers the use of ab234592 in the following tested applications. The application notes include recommended starting dilutions; optimal dilutions/concentrations should be determined by the end user.

Application	Abreviews	Notes
WB		Use at an assay dependent concentration. For monitoring protein transfer onto membranes and sizing of proteins on WB. Recommended loading amounts: 2.5 µl.
SDS-PAGE		Use at an assay dependent concentration. For monitoring protein migration and sizing of proteins on SDS-PAGE. Recommended loading amounts: 3-5 µl per well for 15-well or 10-well mini-gel, respectively.

Images



SDS-PAGE analysis with ab234592.

Gel 1: Tris-Glycine 4-20%

Gel 2: Bis-Tris 4-12% MES buffer.

The apparent molecular weight (kDa) of each protein has been determined by calibration against unstained protein standards; supplemental data should be considered for more accurate adjustment in different electrophoresis conditions.

Please note: All products are "FOR RESEARCH USE ONLY. NOT FOR USE IN DIAGNOSTIC PROCEDURES"

Our Abpromise to you: Quality guaranteed and expert technical support

- Replacement or refund for products not performing as stated on the datasheet
- Valid for 12 months from date of delivery
- Response to your inquiry within 24 hours
- We provide support in Chinese, English, French, German, Japanese and Spanish
- Extensive multi-media technical resources to help you
- We investigate all quality concerns to ensure our products perform to the highest standards

If the product does not perform as described on this datasheet, we will offer a refund or replacement. For full details of the Abpromise, please visit <https://www.abcam.com/abpromise> or contact our technical team.

Terms and conditions

- Guarantee only valid for products bought direct from Abcam or one of our authorized distributors