

Cell Surface Protein Isolation Kit ab206998

[8 References](#) [2 Images](#)

Overview

Product name	Cell Surface Protein Isolation Kit
Sample type	Adherent cells, Suspension cells
Assay time	3h 00m
Product overview	Cell surface protein isolation kit (ab206998) enables the isolation of cell surface proteins for various downstream applications such as western blotting and other structural and functional studies. The cell surface protein isolation kit provides a simple and efficient method for the isolation of cell surface proteins.

In this method, cells are first labeled with Sulfo-NHS-SS-Biotin, an amine-reactive, thiol-cleavable, biotinylation reagent. Cells are subsequently lysed and the labeled cell surface proteins are isolated using streptavidin beads. The bound proteins are then released from beads by incubating with DTT solution. The biotinylation reagent is cell membrane-impermeable, with an extended spacer arm to reduce steric hindrances associated with streptavidin binding.

Cell surface protein isolation protocol summary:

- remove culture media and wash cells
- add biotin solution and incubate for 30 min
- add quenching solution and incubate for 5 min
- collect cells and spin at 500 g for 3 min
- wash cell pellet twice
- resuspend pellet in lysis buffer and incubate for 30 min
- spin at 10,000 g for 2 min and retain supernatant
- add supernatant to streptavidin beads and incubate for 1 hr
- spin at 800 g for 1 min
- wash beads twice and spin at 800 g
- add elution buffer and incubate for 30 min
- spin down beads and collect supernatant for analysis

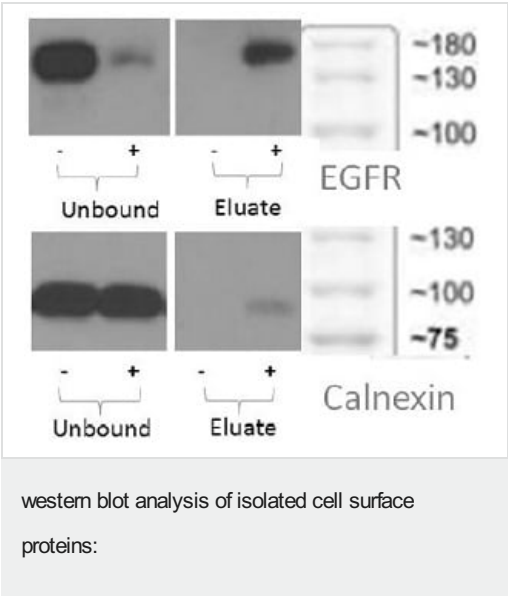
Notes	This product is manufactured by BioVision, an Abcam company and was previously called K295 Cell Surface Protein Isolation Kit. K295-10 is the same size as the 10 test size of ab206998.
--------------	--

Properties

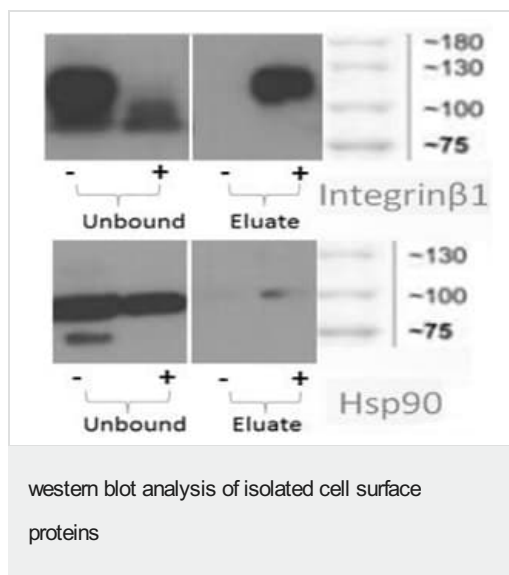
Storage instructions	Store at +4°C. Please refer to protocols.
-----------------------------	---

Components	10 tests
DTT II	1 x 100µl
Lysis Buffer VIII	1 x 6.5ml
PBS Tablet	1 tablet
Quenching Solution I	1 x 10ml
Streptavidin Beads	1 x 1.5ml
Sulfo-NHS-SS-Biotin	5 vials
TBS Tablet	1 tablet
Wash Buffer VII	1 x 12ml

Images



western blot analysis of cell surface proteins isolated using ab206998 Cell surface proteins were isolated from HeLa cells in the presence (+) and absence (-) of Sulfo-NHS-SS-Biotin. The blots were probed with antibodies to Endoplasmic Growth Factor Receptor (EGFR), a plasma membrane marker (top) and Calnexin, a cytosolic marker (bottom).



western blot analysis of isolated cell surface proteins HeLa cells were used to isolate the cell surface proteins, in the presence (+) and absence (-) of Sulfo-NHS-SS-Biotin. (b) Integrin β 1 and Hsp90 as plasma membrane and cytosolic markers, respectively. Isolation was performed following the kit protocol.

Please note: All products are "FOR RESEARCH USE ONLY. NOT FOR USE IN DIAGNOSTIC PROCEDURES"

Our Abpromise to you: Quality guaranteed and expert technical support

- Replacement or refund for products not performing as stated on the datasheet
- Valid for 12 months from date of delivery
- Response to your inquiry within 24 hours
- We provide support in Chinese, English, French, German, Japanese and Spanish
- Extensive multi-media technical resources to help you
- We investigate all quality concerns to ensure our products perform to the highest standards

If the product does not perform as described on this datasheet, we will offer a refund or replacement. For full details of the Abpromise, please visit <https://www.abcam.com/abpromise> or contact our technical team.

Terms and conditions

- Guarantee only valid for products bought direct from Abcam or one of our authorized distributors