

Product datasheet

HeLa Apoptosis Lysate Set: Staurosporine-Treated and Vehicle-Treated Control ab136806

1 Image

Overview

Product name	HeLa Apoptosis Lysate Set: Staurosporine-Treated and Vehicle-Treated Control
Product overview	<p>Staurosporine is a broad-spectrum inhibitor of serine/threonine kinases and tyrosine kinases. It is commonly used to induce apoptosis in experimental settings, although the mechanism is not fully understood.</p> <p>The staurosporine-treated HeLa lysate is designed for use as a western blot positive control for antibodies against apoptosis-specific proteins or for experimental treatments to induce apoptosis.</p>
Notes	<p>Confluent HeLa cells were treated with either the vehicle (DMSO, 0.2%) or staurosporine (1 μM) for 4 hours. Cells were pelleted then lysed with Lysis Buffer (50 mM Tris-HCl pH 7.5, 150 mM NaCl, 10 mM NaF, 1x Protease Inhibitors, 1% SDS) and the lysate cleared by sonication. The protein concentration was measured by BCA assay. Modified 5x SDS sample buffer was added to the lysate before storage at -80°C. The lysates were validated by western blotting with the ab136812 Apoptosis WB cocktail (cleaved PARP, actin, caspase 3).</p>
Tested applications	Suitable for: WB, SDS-PAGE

Properties

Storage instructions Store at -80°C. Please refer to protocols.

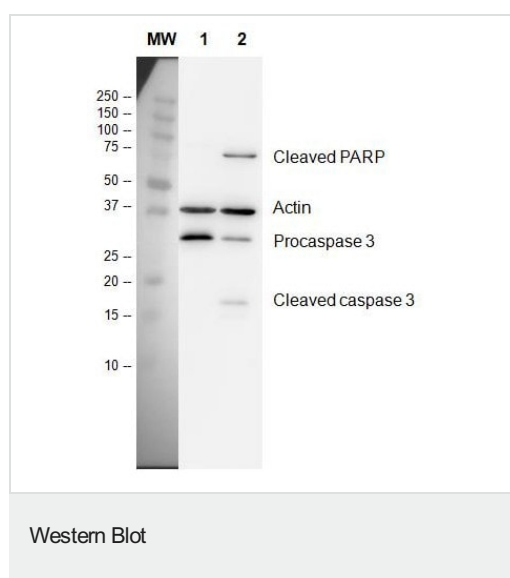
Components	2 units
Staurosporine-Treated HeLa Lysate	1 x 200 μ g
Control for Staurosporine-Treated Lysate	1 x 200 μ g

Applications

The Abpromise guarantee Our [Abpromise guarantee](#) covers the use of ab136806 in the following tested applications. The application notes include recommended starting dilutions; optimal dilutions/concentrations should be determined by the end user.

Application	Abreviews	Notes
WB		Use at an assay dependent concentration. Suggested working concentration: 2.0 mg/mL, Load 20 µg/lane. User may choose to boil the sample before loading, at their discretion.
SDS-PAGE		Use at an assay dependent concentration. Suggested working concentration: 2.0 mg/mL, Load 20µg/lane. User may choose to boil the sample before loading, at their discretion.

Images



Lane 1: HeLa, vehicle (DMSO) treated for 4 hours Lane 2: HeLa 1 µM staurosporine, 4 hours Load 20 µg/lane 5% milk/PBST for block and antibody diluent Primary antibodies (2 hours, room temp) All lanes: **ab136812** 250X Primary Antibodies Cocktail, 1/250 dilution Secondary antibodies (1 hour, room temp) All lanes: **ab136812** 100X HRP-Conjugated Secondary Antibodies Cocktail, 1/100 dilution

Please note: All products are "FOR RESEARCH USE ONLY. NOT FOR USE IN DIAGNOSTIC PROCEDURES"

Our Abpromise to you: Quality guaranteed and expert technical support

- Replacement or refund for products not performing as stated on the datasheet
- Valid for 12 months from date of delivery
- Response to your inquiry within 24 hours
- We provide support in Chinese, English, French, German, Japanese and Spanish
- Extensive multi-media technical resources to help you
- We investigate all quality concerns to ensure our products perform to the highest standards

If the product does not perform as described on this datasheet, we will offer a refund or replacement. For full details of the Abpromise, please visit <https://www.abcam.com/abpromise> or contact our technical team.

Terms and conditions

- Guarantee only valid for products bought direct from Abcam or one of our authorized distributors