

Product datasheet

Mitochondria Isolation Kit for Cultured Cells (with Dounce Homogenizer) ab110171

★★★★★ [1 Abreviews](#) [24 References](#) [1 Image](#)

Overview

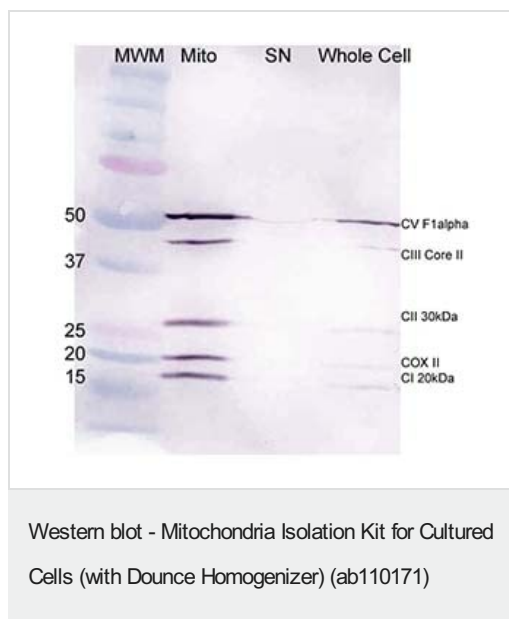
Product name	Mitochondria Isolation Kit for Cultured Cells (with Dounce Homogenizer)
Assay type	Quantitative
Species reactivity	<b>Reacts with:</b> Mammals
Product overview	ab110171 contains sufficient reagents for up to 20 benchtop mitochondria isolations from mammalian cultured cells. Isolated mitochondria can be analyzed by Western Blotting, Immunocapture, or Activity assay.

Properties

Storage instructions                      Store at +4°C. Please refer to protocols.

Components	1 kit
Dounce Homogenizer (2 ml size) with pestles	1 unit
Reagent A	1 x 50ml
Reagent B	1 x 50ml
Reagent C	1 x 10ml

Images



Isolated mitochondria show enriched signal when compared to the whole cell extract. In lane 1, MRC5 mitochondria isolated with Abcam's ab110171/MS853 Mitochondria Isolation Kit for Cultured Cells (with Dounce Homogenizer) were loaded at 20 µg. In lanes 2 and 3, post-spin supernatant (SN) and whole cell extract were loaded at 20 µg.

**Please note:** All products are "FOR RESEARCH USE ONLY. NOT FOR USE IN DIAGNOSTIC PROCEDURES"

### Our Abpromise to you: Quality guaranteed and expert technical support

- Replacement or refund for products not performing as stated on the datasheet
- Valid for 12 months from date of delivery
- Response to your inquiry within 24 hours
- We provide support in Chinese, English, French, German, Japanese and Spanish
- Extensive multi-media technical resources to help you
- We investigate all quality concerns to ensure our products perform to the highest standards

If the product does not perform as described on this datasheet, we will offer a refund or replacement. For full details of the Abpromise, please visit <https://www.abcam.com/abpromise> or contact our technical team.

### Terms and conditions

- Guarantee only valid for products bought direct from Abcam or one of our authorized distributors