

Thrombin cleavage kit ab207000

[2 References](#) [2 Images](#)

Overview

Product name	Thrombin cleavage kit
Product overview	<p>Abcam's Thrombin cleavage kit (ab207000) efficiently removes tags from recombinant fusion proteins containing an accessible thrombin cleavage sequence.</p> <p>Thrombin is a valuable biochemical tool due to its high proteolytic specificity. A thrombin cleavage site (e.g., Leu-Val-Pro-Arg-II-Gly-Ser; where II denotes the cleavage site) is widely incorporated within the linker region of fusion or affinity tagged recombinant proteins. After successful cleavage with thrombin, affinity tags or fused proteins can be separated from the target protein. Abcam's Thrombin cleavage kit provides an easy approach to test and optimize cleavage conditions of a target fusion or affinity-tagged protein containing a thrombin-specific cleavage site. The kit contains active thrombin enzyme sufficient to cleave up to 5 mg of the target protein. A 6x His-tagged protein containing the thrombin cleavage site is included as a cleavage control protein. Following cleavage of the target protein, thrombin can be removed by passing the reaction mix through a Heparin Sepharose® column.</p>
Notes	<p>This product is manufactured by BioVision, an Abcam company and was previously called K377 Thrombin Cleavage Kit. K377-500 is the same size as the 500 test size of ab207000.</p>
Tested applications	Suitable for: Purification

Properties

Storage instructions Store at -20°C. Please refer to protocols.

Components	500 tests
Active Thrombin	1 vial
Thrombin Cleavage Buffer	1 x 25ml
Thrombin Cleavage Control	1 vial
Thrombin Dilution Buffer	1 x 1ml

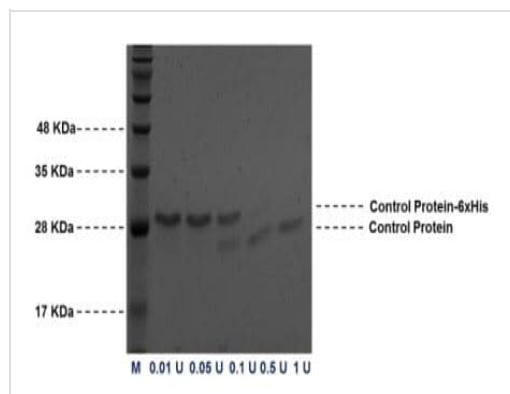
Applications

The Abpromise guarantee

Our **Abpromise guarantee** covers the use of ab207000 in the following tested applications.

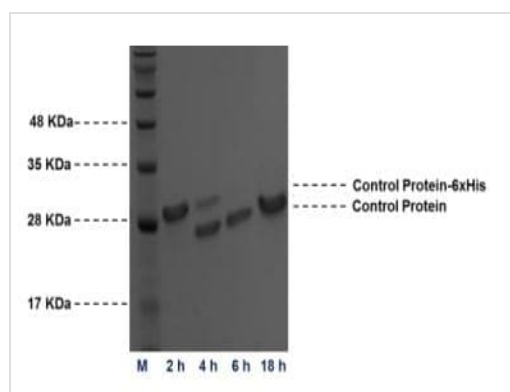
The application notes include recommended starting dilutions; optimal dilutions/concentrations should be determined by the end user.

Application	Abreviews	Notes
Purification		Use at an assay dependent concentration.

Images

SDS-PAGE analysis of thrombin cleavage using different amount of thrombin and ab207000: Cleavage of 10 µg of 6x His-tagged Cleavage Control Protein with different amounts (0.01-1 U/µL) of thrombin at room temperature for 18 hours.

SDS-PAGE analysis of Cleavage Control Protein.



SDS-PAGE analysis of thrombin cleavage at different time points using ab207000: Cleavage of 10 µg of 6x His-tagged Cleavage Control Protein.

SDS-PAGE analysis of Cleavage Control Protein.

Please note: All products are "FOR RESEARCH USE ONLY. NOT FOR USE IN DIAGNOSTIC PROCEDURES"

Our Abpromise to you: Quality guaranteed and expert technical support

- Replacement or refund for products not performing as stated on the datasheet
- Valid for 12 months from date of delivery
- Response to your inquiry within 24 hours
- We provide support in Chinese, English, French, German, Japanese and Spanish
- Extensive multi-media technical resources to help you

- We investigate all quality concerns to ensure our products perform to the highest standards

If the product does not perform as described on this datasheet, we will offer a refund or replacement. For full details of the Abpromise, please visit <https://www.abcam.com/abpromise> or contact our technical team.

Terms and conditions

- Guarantee only valid for products bought direct from Abcam or one of our authorized distributors