

## Product datasheet

# Donkey Anti-Goat IgG H&L (HRP) ab97110

★★★★★ [4 Abreviews](#) [80 References](#) [2 Images](#)

### Overview

---

<b>Product name</b>	Donkey Anti-Goat IgG H&L (HRP)
<b>Host species</b>	Donkey
<b>Target species</b>	Goat
<b>Specificity</b>	By immunoelectrophoresis and ELISA this antibody reacts specifically with Goat IgG and with light chains common to other Goat immunoglobulins. No antibody was detected against non immunoglobulin serum proteins. This antibody may cross react with IgG from other species.
<b>Tested applications</b>	<b>Suitable for:</b> IHC-P, ELISA, WB, ICC
<b>Immunogen</b>	Other Immunogen Type corresponding to Goat IgG. Contains both the heavy and light chain
<b>Conjugation</b>	HRP

### Properties

---

<b>Form</b>	Liquid
<b>Storage instructions</b>	Shipped at 4°C. Store at +4°C.
<b>Storage buffer</b>	pH: 6.8 Constituent: 0.05% CMIT/MIT based preservative
<b>Purity</b>	Immunogen affinity purified
<b>Purification notes</b>	This antibody was isolated by affinity chromatography using antigen coupled to agarose beads and conjugated to Horse Radish Peroxidase (HRP).
<b>Conjugation notes</b>	Molar enzyme/ antibody protein ratio is 4:1
<b>Clonality</b>	Polyclonal
<b>Isotype</b>	IgG
<b>General notes</b>	Part of the <b>AbExcel</b> range.

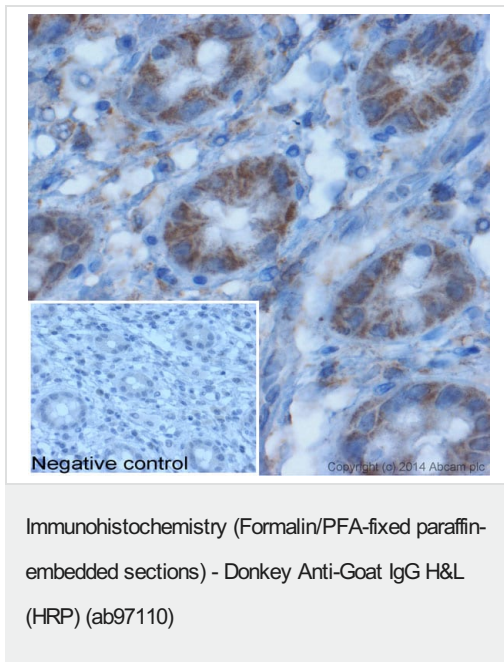
### Applications

---

**The Abpromise guarantee** Our **Abpromise guarantee** covers the use of ab97110 in the following tested applications. The application notes include recommended starting dilutions; optimal dilutions/concentrations should be determined by the end user.

Application	Abreviews	Notes
IHC-P		1/200 - 1/500.
ELISA	★★★★★ (1)	1/10000 - 1/100000. (Primary).
WB	★★★★★ (3)	1/1000 - 1/30000. Colorimetric: 1/1000 - 1/10000. Chemiluminescent: 1/1000 - 1/30000. In some cases the antibody may be diluted further than indicated.
ICC		1/200 - 1/500.

## Images

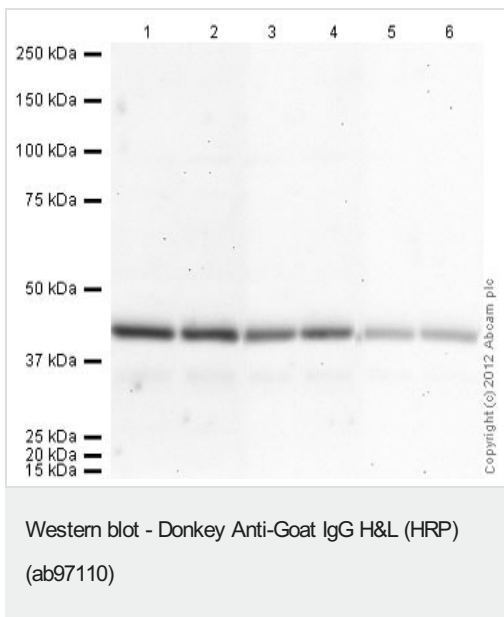


IHC image of beta actin staining in human normal colon formalin fixed paraffin embedded tissue section\*.

The section was pre-treated using pressure cooker heat mediated antigen retrieval with sodium citrate buffer (pH 6) for 30 mins. The section was incubated with [ab8229](#), 10 µg/ml overnight at +4°C. An HRP-conjugated secondary (ab97110, 1/100 dilution) was used for 1 hour at room temperature. The section was counterstained with hematoxylin and mounted with DPX.

The inset **negative control** image is secondary-only at 1/200 dilution.

\*Tissue obtained from the Human Research Tissue Bank, supported by the NIHR Cambridge Biomedical Research Centre



**All lanes** : Anti-beta Actin antibody - Loading Control ([ab8229](#)) at 1 µg/ml

**All lanes** : HeLa (Human epithelial carcinoma cell line) Whole Cell Lysate

Lysates/proteins at 20 µg per lane.

### Secondary

**Lanes 1-2 & 5-6** : Donkey Anti-Goat IgG H&L (HRP) (ab97110) at 1/20000 dilution

**Lanes 3-4** : Donkey Anti-Goat IgG H&L (HRP) (ab97110) at 1/10000 dilution

Developed using the ECL technique.

Performed under reducing conditions.

**Exposure time:** 20 minutes

**Please note:** All products are "FOR RESEARCH USE ONLY. NOT FOR USE IN DIAGNOSTIC PROCEDURES"

### **Our Abpromise to you: Quality guaranteed and expert technical support**

---

- Replacement or refund for products not performing as stated on the datasheet
- Valid for 12 months from date of delivery
- Response to your inquiry within 24 hours
  
- We provide support in Chinese, English, French, German, Japanese and Spanish
- Extensive multi-media technical resources to help you
- We investigate all quality concerns to ensure our products perform to the highest standards

If the product does not perform as described on this datasheet, we will offer a refund or replacement. For full details of the Abpromise, please visit <https://www.abcam.com/abpromise> or contact our technical team.

### **Terms and conditions**

---

- Guarantee only valid for products bought direct from Abcam or one of our authorized distributors