

Product datasheet

Donkey Anti-Goat IgG H&L (PE) preadsorbed ab7004

★★★★★ [1 Abreviews](#) [8 References](#) [2 Images](#)

Overview

Product name	Donkey Anti-Goat IgG H&L (PE) preadsorbed
Host species	Donkey
Target species	Goat
Specificity	No reaction was observed against anti-Pepsin, anti-Donkey IgG F(c), Chicken, Guinea Pig, Hamster, Horse, Human, Mouse, Rabbit, or Rat Serum Proteins.
Tested applications	Suitable for: ICC/IF, IHC-P, IHC-Fr, Immunomicroscopy, Flow Cyt
Minimal cross-reactivity	Chicken, Guinea pig, Hamster, Horse, Human, Mouse, Rabbit, Rat more details
Immunogen	Goat IgG whole molecule
Conjugation	PE. Ex: 488nm, Em: 575nm

Properties

Form	Liquid
Storage instructions	Shipped at 4°C. Store at +4°C.
Storage buffer	pH: 6.50 Preservative: 0.01% Sodium azide Constituents: 0.878% Sodium chloride, 1% BSA, 0.424% Tripotassium orthophosphate
Purity	Immunogen affinity purified
Purification notes	This product was prepared from monospecific antiserum by immunoaffinity chromatography using Goat IgG coupled to agarose beads followed by solid phase adsorption(s) to remove any unwanted reactivities, pepsin digestion and chromatographic separation.
Conjugation notes	R-Phycoerythrin (R-PE) Molecular Weight 240,000 daltons) Absorption Wavelength: 488 nm Emission Wavelength: 575 nm OD _{566nm} /OD _{280nm} : 2.8
Clonality	Polyclonal
Isotype	IgG
General notes	Can be used in immunomicroscopy and flow cytometry or FACS analysis as well as other antibody based fluorescent assays requiring extremely low background levels, absence of F(c) mediated binding, lot-to-lot consistency, high titer and specificity.

Applications

The Abpromise guarantee

Our **Abpromise guarantee** covers the use of ab7004 in the following tested applications.

The application notes include recommended starting dilutions; optimal dilutions/concentrations should be determined by the end user.

Application	Abreviews	Notes
ICC/IF		1/100 - 1/250.
IHC-P		Use at an assay dependent dilution.
IHC-Fr		Use at an assay dependent dilution.
Immunomicroscopy		Use at an assay dependent dilution. As a general guideline, dilutions of 1/50 to 1/200 should be suitable for most applications.
Flow Cyt	★★★★★ (1)	1/100 - 1/250. The maximum amount of reagent required to stain 1×10^6 cells in flow cytometry is approximately $1.0\mu\text{g}$ of antibody conjugate. Lesser amounts of reagent may be sufficient for staining.

Images



Dot Blot - Donkey Anti-Goat IgG H&L
(Phycoerythrin) preadsorbed (ab7004)

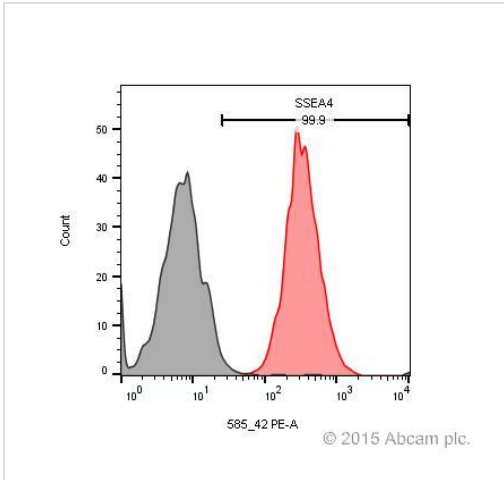
Dot Blot of ab7004.

Antigen: Goat IgG.

Load: 100 ng, 33.3 ng, 11.1 ng, 3.7 ng, or 1.23 ng as indicated.

Secondary antibody: ab7004 at 1:1,000 for 60 min at RT.

Block: Blocking Buffer for Fluorescent Western Blotting for 60 min at RT.



Very bright secondary antibody and PE is one of the best if you have a weak antigen. I used this in a perfect pairing with FITC in a FACS experiment to check pluripotency markers in human embryonic stem cells.

Flow Cytometry - Donkey Anti-Goat IgG H&L
 (Phycoerythrin) preadsorbed (ab7004)
 Verified Customer

Please note: All products are "FOR RESEARCH USE ONLY. NOT FOR USE IN DIAGNOSTIC PROCEDURES"

Our Abpromise to you: Quality guaranteed and expert technical support

- Replacement or refund for products not performing as stated on the datasheet
- Valid for 12 months from date of delivery
- Response to your inquiry within 24 hours
- We provide support in Chinese, English, French, German, Japanese and Spanish
- Extensive multi-media technical resources to help you
- We investigate all quality concerns to ensure our products perform to the highest standards

If the product does not perform as described on this datasheet, we will offer a refund or replacement. For full details of the Abpromise, please visit <https://www.abcam.com/abpromise> or contact our technical team.

Terms and conditions

- Guarantee only valid for products bought direct from Abcam or one of our authorized distributors