

Donkey Anti-Mouse IgG H&L (Biotin) ab208001

[2 References](#) [3 Images](#)

Overview

| | |
|---------------------|---|
| Product name | Donkey Anti-Mouse IgG H&L (Biotin) |
| Host species | Donkey |
| Target species | Mouse |
| Tested applications | Suitable for: Flow Cyt, IP, ICC/IF, WB, IHC-Fr, IHC-P, ELISA |
| Immunogen | The details of the immunogen for this antibody are not available. |
| Conjugation | Biotin |

Properties

| | |
|----------------------|--|
| Form | Liquid |
| Storage instructions | Shipped at 4°C. Store at +4°C short term (1-2 weeks). Upon delivery aliquot. Store at -20°C. Avoid freeze / thaw cycle. Store In the Dark. |
| Storage buffer | pH: 7.40 Preservative: 0.02% Sodium azide Constituents: PBS, 1% BSA, 30% Glycerol (glycerin, glycerine) |
| Purity | Affinity purified |
| Purification notes | Immunogen affinity purified - This antibody was isolated by affinity chromatography using antigen coupled to agarose beads and conjugated to Biotin. |
| Clonality | Polyclonal |
| Isotype | IgG |

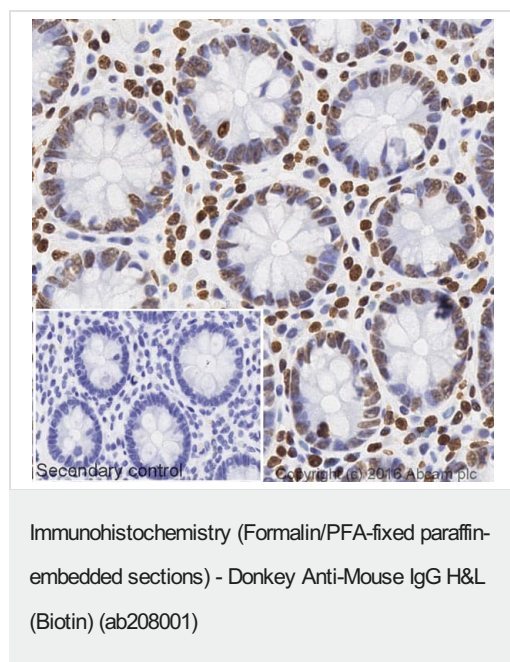
Applications

The Abpromise guarantee Our **Abpromise guarantee** covers the use of ab208001 in the following tested applications. The application notes include recommended starting dilutions; optimal dilutions/concentrations should be determined by the end user.

| Application | Abreviews | Notes |
|-------------|-----------|--|
| Flow Cyt | | Use at an assay dependent concentration. |
| | | |

| Application | Abreviews | Notes |
|-------------|-----------|--|
| IP | | Use at an assay dependent concentration. |
| ICC/IF | | Use at an assay dependent concentration. |
| WB | | Use at an assay dependent concentration. |
| IHC-Fr | | Use at an assay dependent concentration. |
| IHC-P | | 1/500 - 1/5000. Perform heat mediated antigen retrieval with citrate buffer pH 6 before commencing with IHC staining protocol. |
| ELISA | | 1/20000 - 1/200000. |

Images



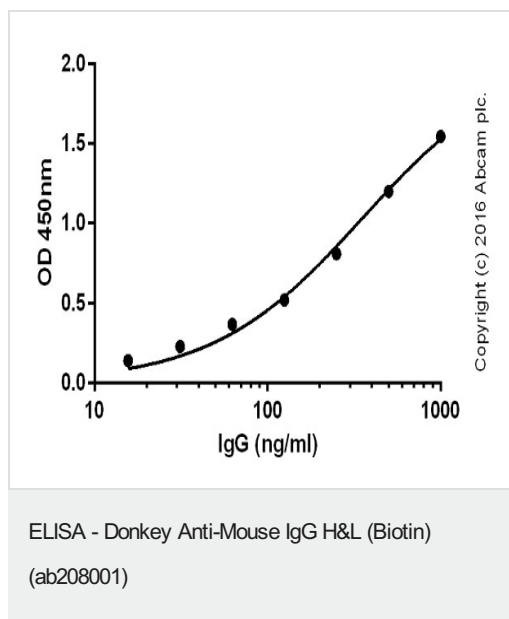
IHC image of Histone H4 staining in a section of formalin-fixed paraffin-embedded normal human colon tissue*. Ab208001 Donkey Anti-Mouse IgG H & L (Biotin) was used as the secondary antibody.

Staining was performed on a Leica Bond™. The section was pre-treated using heat mediated antigen retrieval with sodium citrate buffer (pH6, epitope retrieval solution 1) for 20 mins, before blocking of endogenous biotin using [ab64212](#). The section was then incubated with [ab31830](#), 1/100 dilution, for 15 mins at room temperature, followed by ab208001, 1/500 dilution, for 15 mins at room temperature. Detection was via an HRP conjugated ABC system and DAB was used as the chromogen. The section was then counterstained with haematoxylin and mounted with DPX.

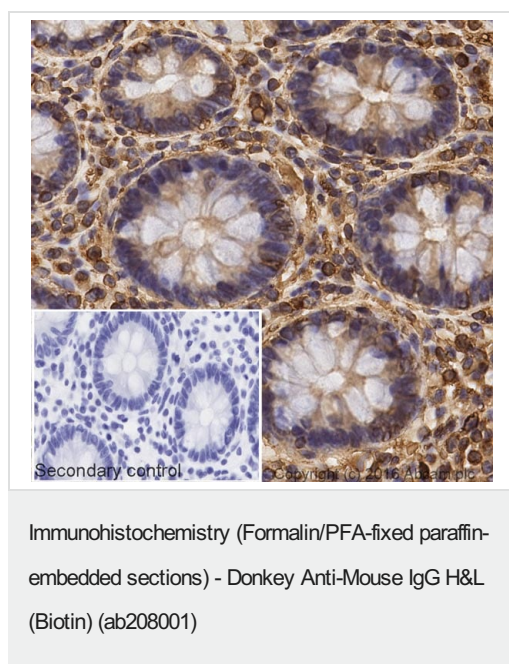
The inset negative control image is taken from an identical assay without primary antibody.

For other IHC staining systems (automated and non-automated) customers should optimize variable parameters such as antigen retrieval conditions, primary antibody concentration and antibody incubation times.

**Tissue obtained from the Human Research Tissue Bank, supported by the NIHR Cambridge Biomedical Research Centre*



ab208001 was tested by direct ELISA, where wells were coated with serially diluted mouse IgG (1000 – 16 ng/ml) for 2 hours, followed by a 2 hour blocking step (5% BSA). ab208001 (1:20,000 dilution; 2 hours) was added and detected by streptavidin-HRP ([ab7403](#); 1:10,000 dilution; 1 hour). Signal was developed by TMB substrate. Data from duplicates; +/- SD.



IHC image of alpha Tubulin staining in a section of formalin-fixed paraffin-embedded normal human colon tissue*. Ab208001 Donkey Anti-Mouse IgG H & L (Biotin) was used as the secondary antibody.

Staining was performed on a Leica Bond™. The section was pre-treated using heat mediated antigen retrieval with sodium citrate buffer (pH6, epitope retrieval solution 1) for 20 mins, before blocking of endogenous biotin using [ab64212](#). The section was then incubated with [ab7291](#), 1/100 dilution, for 15 mins at room temperature, followed by ab208001, 1/500 dilution, for 15 mins at room temperature. Detection was via an HRP conjugated ABC system and DAB was used as the chromogen. The section was then counterstained with haematoxylin and mounted with DPX.

The inset negative control image is taken from an identical assay without primary antibody.

For other IHC staining systems (automated and non-automated) customers should optimize variable parameters such as antigen retrieval conditions, primary antibody concentration and antibody incubation times.

**Tissue obtained from the Human Research Tissue Bank, supported by the NIHR Cambridge Biomedical Research Centre*

Our Abpromise to you: Quality guaranteed and expert technical support

- Replacement or refund for products not performing as stated on the datasheet
- Valid for 12 months from date of delivery
- Response to your inquiry within 24 hours

- We provide support in Chinese, English, French, German, Japanese and Spanish
- Extensive multi-media technical resources to help you
- We investigate all quality concerns to ensure our products perform to the highest standards

If the product does not perform as described on this datasheet, we will offer a refund or replacement. For full details of the Abpromise, please visit <https://www.abcam.com/abpromise> or contact our technical team.

Terms and conditions

- Guarantee only valid for products bought direct from Abcam or one of our authorized distributors