

## Product datasheet

# Goat Anti-Chicken IgY H&L (Texas Red ®) ab6875

[1 References](#) [1 Image](#)

### Overview

---

<b>Product name</b>	Goat Anti-Chicken IgY H&L (Texas Red ®)
<b>Host species</b>	Goat
<b>Target species</b>	Chicken
<b>Tested applications</b>	<b>Suitable for:</b> Immunomicroscopy, Flow Cyt, ICC/IF, IHC-P, IHC-Fr, ELISA
<b>Immunogen</b>	chicken IgY whole molecule
<b>Conjugation</b>	Texas Red ®. Ex: 596nm, Em: 620nm

### Properties

---

<b>Form</b>	Liquid
<b>Storage instructions</b>	Shipped at 4°C. Store at +4°C short term (1-2 weeks). Upon delivery aliquot. Store at -20°C or -80°C. Avoid freeze / thaw cycle.
<b>Storage buffer</b>	Preservative: 0.01% Sodium azide Constituents: 0.88% Sodium chloride, 1% BSA, 0.42% Potassium phosphate
<b>Purity</b>	Affinity purified
<b>Purification notes</b>	This product was prepared from monospecific antiserum by immunoaffinity chromatography using chicken IgG coupled to agarose beads followed by solid phase adsorption(s) to remove any unwanted reactivities.
<b>Conjugation notes</b>	Texas Red™ Sulfonyl Chloride (Molecular Weight 625 daltons) Absorption Wavelength: 596 nm Emission Wavelength: 620 nm Fluorochrome/Protein Ratio: 4.9 moles Texas Redä per mole of Rabbit IgG
<b>Clonality</b>	Polyclonal

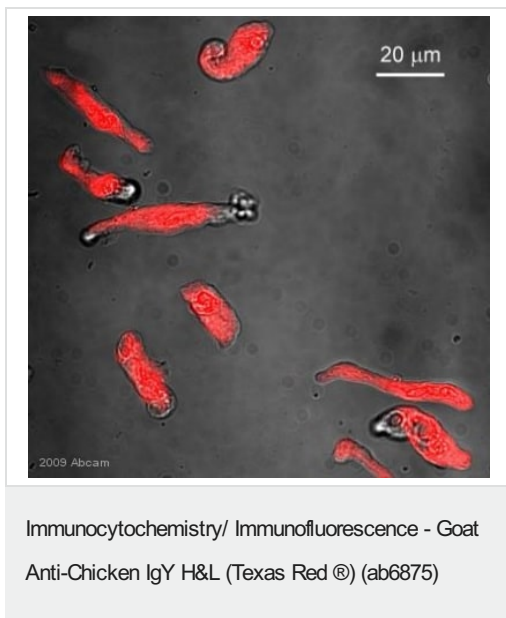
### Applications

---

**The Abpromise guarantee** Our **Abpromise guarantee** covers the use of ab6875 in the following tested applications. The application notes include recommended starting dilutions; optimal dilutions/concentrations should be determined by the end user.

Application	Abreviews	Notes
Immunomicroscopy		Use at an assay dependent concentration.
Flow Cyt		Use at an assay dependent dilution.
ICC/IF		1/1000 - 1/5000.
IHC-P		Use at an assay dependent concentration.
IHC-Fr		Use at an assay dependent concentration.
ELISA		1/10000 - 1/50000.

## Images



Ab6875 was used at dilution 1/400 with the primary antibody [ab24525](#) in ICC/IF. See the review on [ab24525](#).

**Please note:** All products are "FOR RESEARCH USE ONLY. NOT FOR USE IN DIAGNOSTIC PROCEDURES"

### Our Abpromise to you: Quality guaranteed and expert technical support

- Replacement or refund for products not performing as stated on the datasheet
- Valid for 12 months from date of delivery
- Response to your inquiry within 24 hours
- We provide support in Chinese, English, French, German, Japanese and Spanish
- Extensive multi-media technical resources to help you
- We investigate all quality concerns to ensure our products perform to the highest standards

If the product does not perform as described on this datasheet, we will offer a refund or replacement. For full details of the Abpromise, please visit <https://www.abcam.com/abpromise> or contact our technical team.

## Terms and conditions

---

- Guarantee only valid for products bought direct from Abcam or one of our authorized distributors