

## Product datasheet

# Goat monoclonal [RMG02] Anti-Rabbit IgG Fc (Biotin) ab238531

Recombinant

[3 Images](#)

### Overview

<b>Product name</b>	Goat monoclonal [RMG02] Anti-Rabbit IgG Fc (Biotin)
<b>Host species</b>	Goat
<b>Target species</b>	Rabbit
<b>Specificity</b>	ab238531 reacts to the Fc region of Rabbit IgG. No cross reactivity with human IgG, rat IgG, or mouse IgG.
<b>Tested applications</b>	<b>Suitable for:</b> ELISA, WB
<b>Minimal cross-reactivity</b>	Human, Mouse, Rat <a href="#">more details</a>
<b>Immunogen</b>	Full length protein corresponding to Rabbit IgG Fc.
<b>Conjugation</b>	Biotin

### Properties

<b>Form</b>	Liquid
<b>Storage instructions</b>	Shipped at 4°C. Store at +4°C short term (1-2 weeks). Upon delivery aliquot. Store at -20°C long term. Avoid freeze / thaw cycle. Store In the Dark.
<b>Storage buffer</b>	Preservative: 0.09% Sodium azide Constituents: 1% BSA, 50% Glycerol (glycerin, glycerine), PBS
<b>Purity</b>	Protein G purified
<b>Purification notes</b>	ab238531 was purified from an animal origin-free culture supernatant.
<b>Clonality</b>	Monoclonal
<b>Clone number</b>	RMG02
<b>Isotype</b>	IgG

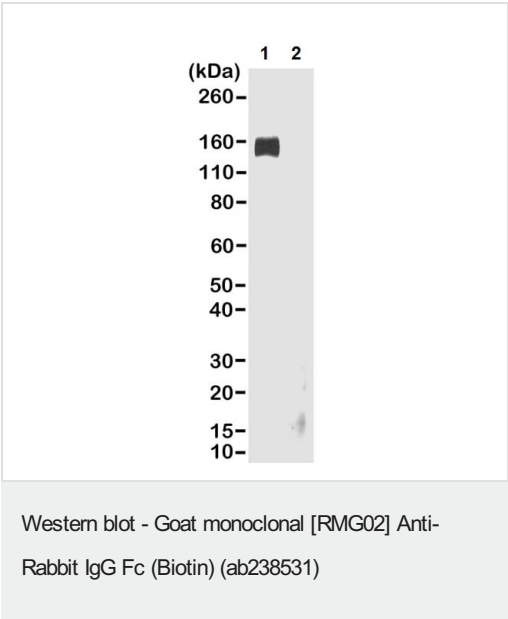
### Applications

The Abpromise guarantee

Our **Abpromise guarantee** covers the use of ab238531 in the following tested applications.  
The application notes include recommended starting dilutions; optimal dilutions/concentrations should be determined by the end user.

Application	Abreviews	Notes
ELISA		Use a concentration of 0.01 - 0.5 µg/ml.
WB		Use a concentration of 0.1 - 0.5 µg/ml. Use under non reducing condition. Predicted molecular weight: 150 kDa.

Images

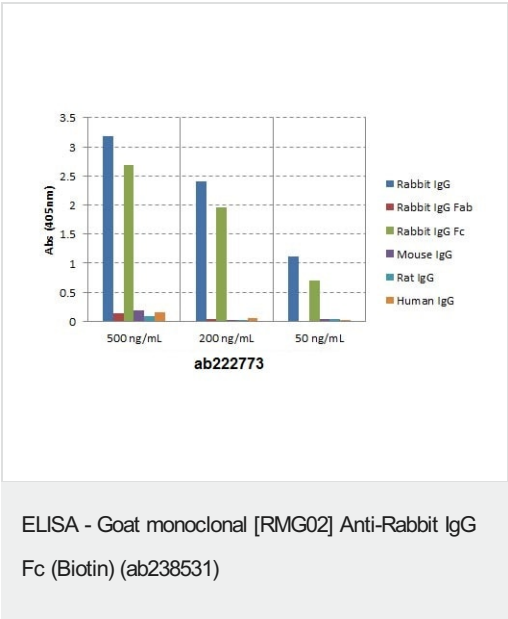


**All lanes** : Goat monoclonal [RMG02] Anti-Rabbit IgG Fc (Biotin) (ab238531) at 0.2 µg/ml

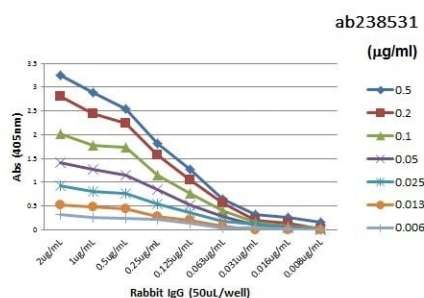
**Lane 1** : Non-reduced rabbit IgG  
**Lane 2** : Reduced rabbit IgG

Lysates/proteins at 0.02 µg per lane.

**Predicted band size:** 150 kDa



ELISA of IgGs from different species shows ab238531 reacts to the Fc region of rabbit IgG; no cross reactivity with human IgG, rat IgG, or mouse IgG. The plate was coated with 50 ng/well of different IgG. ab238531 was used as the primary antibody. An alkaline phosphatase conjugated anti-goat IgG as the secondary antibody.



A titer ELISA of rabbit IgG. The plate was coated with different amounts of rabbit IgG. A serial dilution of ab238531 was used as the primary antibody. An alkaline phosphatase conjugated anti-goat IgG as the secondary antibody.

ELISA - Goat monoclonal [RMG02] Anti-Rabbit IgG  
Fc (Biotin) (ab238531)

**Please note:** All products are "FOR RESEARCH USE ONLY. NOT FOR USE IN DIAGNOSTIC PROCEDURES"

### Our Abpromise to you: Quality guaranteed and expert technical support

- Replacement or refund for products not performing as stated on the datasheet
- Valid for 12 months from date of delivery
- Response to your inquiry within 24 hours
- We provide support in Chinese, English, French, German, Japanese and Spanish
- Extensive multi-media technical resources to help you
- We investigate all quality concerns to ensure our products perform to the highest standards

If the product does not perform as described on this datasheet, we will offer a refund or replacement. For full details of the Abpromise, please visit <https://www.abcam.com/abpromise> or contact our technical team.

### Terms and conditions

- Guarantee only valid for products bought direct from Abcam or one of our authorized distributors