

## Product datasheet

### Goat Anti-Mouse IgG Fc (HRP) ab97265

[45 References](#) [1 Image](#)

#### Overview

Product name	Goat Anti-Mouse IgG Fc (HRP)
Host species	Goat
Target species	Mouse
Specificity	By immunoelectrophoresis and ELISA this antibody reacts specifically with Mouse IgG-Fc fragment. Cross reactivity with IgA and IgM is negligible. This antibody may cross react with IgG from other species.
Tested applications	<b>Suitable for:</b> ICC, IHC-P, ELISA, WB
Conjugation	HRP

#### Properties

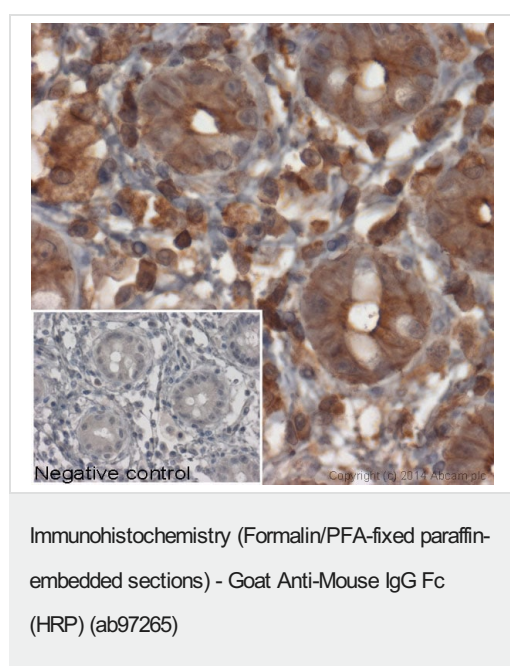
Form	Liquid
Storage instructions	Shipped at 4°C. Store at +4°C.
Storage buffer	pH: 6.80 Constituents: 0.2% BSA, 99.75% PBS, 0.05% CMIT/MIT based preservative
Purity	Immunogen affinity purified
Purification notes	Antiserum was solid phase adsorbed to ensure class specificity. This antibody was isolated by affinity chromatography using antigen coupled to agarose beads and conjugated to Horse Radish Peroxidase (HRP).
Conjugation notes	Molar enzyme/ antibody protein ratio is 4:1
Clonality	Polyclonal
Isotype	IgG

#### Applications

**The Abpromise guarantee** Our **Abpromise guarantee** covers the use of ab97265 in the following tested applications. The application notes include recommended starting dilutions; optimal dilutions/concentrations should be determined by the end user.

Application	Abreviews	Notes
ICC		Use at an assay dependent dilution.
IHC-P		1/200 - 1/2000.
ELISA		1/10000 - 1/100000. (Primary).
WB		1/2000 - 1/25000. Colorimetric: 1/2000 - 1/20000; Chemiluminescent: 1/5000 - 1/25000

## Images



IHC image of beta actin staining in normal human colon, formalin-fixed and paraffin-embedded tissue\*. The section was pre-treated using pressure cooker heat mediated antigen retrieval with sodium citrate buffer (pH6) for 30mins. The section was incubated with **ab8224**, 3µg/ml overnight at +4°C. An HRP-conjugated secondary (Ab97265, 1/1000 dilution) was used for 1hr at room temperature. The section was counterstained with haematoxylin and mounted with DPX.

The inset negative control image is secondary-only at 1/200 dilution.

\*Tissue obtained from the Human Research Tissue Bank, supported by the NIHR Cambridge Biomedical Research Centre

**Please note:** All products are "FOR RESEARCH USE ONLY. NOT FOR USE IN DIAGNOSTIC PROCEDURES"

## Our Abpromise to you: Quality guaranteed and expert technical support

- Replacement or refund for products not performing as stated on the datasheet
- Valid for 12 months from date of delivery
- Response to your inquiry within 24 hours
- We provide support in Chinese, English, French, German, Japanese and Spanish
- Extensive multi-media technical resources to help you
- We investigate all quality concerns to ensure our products perform to the highest standards

If the product does not perform as described on this datasheet, we will offer a refund or replacement. For full details of the Abpromise, please visit <https://www.abcam.com/abpromise> or contact our technical team.

## Terms and conditions

---

- Guarantee only valid for products bought direct from Abcam or one of our authorized distributors