

Product datasheet

Goat Anti-Mouse IgG H&L (Alexa Fluor® 790) ab175783

[3 References](#) [3 Images](#)

Overview

Product name	Goat Anti-Mouse IgG H&L (Alexa Fluor® 790)
Host species	Goat
Target species	Mouse
Tested applications	Suitable for: WB
Immunogen	The details of the immunogen for this antibody are not available.
Conjugation	Alexa Fluor® 790. Ex: 782nm, Em: 805nm

Properties

Form	Liquid
Storage instructions	Shipped at 4°C. Store at +4°C short term (1-2 weeks). Upon delivery aliquot. Store at -20°C. Avoid freeze / thaw cycle. Stable for 12 months at -20°C. Store In the Dark.
Storage buffer	Preservative: 0.02% Sodium azide Constituents: 23% Glycerol (glycerin, glycerine), PBS, 1% BSA
Purity	Immunogen affinity purified
Clonality	Polyclonal
General notes	<p>We batch test Goat Anti-Mouse IgG H&L (Alexa Fluor® 790), ab175783 in fluorescent WB. Although we don't batch test for ICC, ELISA, IHC-Fr or Flow cytometry customers have had success using Goat Anti-Mouse IgG H&L (Alexa Fluor® 790), ab175783 in these applications.</p> <p>Alexa Fluor® is a registered trademark of Molecular Probes, Inc, a Thermo Fisher Scientific Company. The Alexa Fluor® dye included in this product is provided under an intellectual property license from Life Technologies Corporation. As this product contains the Alexa Fluor® dye, the purchase of this product conveys to the buyer the non-transferable right to use the purchased product and components of the product only in research conducted by the buyer (whether the buyer is an academic or for-profit entity). As this product contains the Alexa Fluor® dye the sale of this product is expressly conditioned on the buyer not using the product or its components, or any materials made using the product or its components, in any activity to generate revenue, which may include, but is not limited to use of the product or its components: (i) in manufacturing; (ii) to provide a service, information, or data in return for payment (iii) for therapeutic, diagnostic or prophylactic purposes; or (iv) for resale, regardless of whether they are sold for use in research. For information on purchasing a license to this product for purposes other than research, contact</p>

Applications

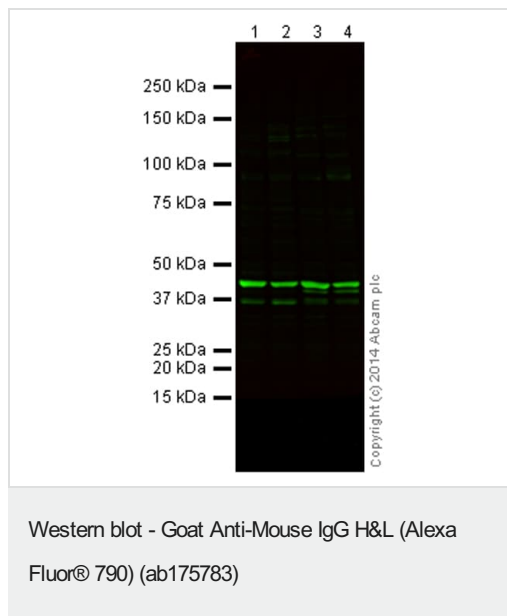
The Abpromise guarantee

Our **Abpromise guarantee** covers the use of ab175783 in the following tested applications.

The application notes include recommended starting dilutions; optimal dilutions/concentrations should be determined by the end user.

Application	Abreviews	Notes
WB		1/10000.

Images



All lanes : Anti-beta Actin antibody [mAbcam 8226] - Loading Control (**ab8226**) at 1/1000 dilution

Lane 1 : A431 (Human epidermoid carcinoma cell line) Whole Cell Lysate

Lane 2 : HEK293 (Human embryonic kidney cell line) Whole Cell Lysate

Lane 3 : NIH 3T3 (Mouse embryo fibroblast cell line) Whole Cell Lysate

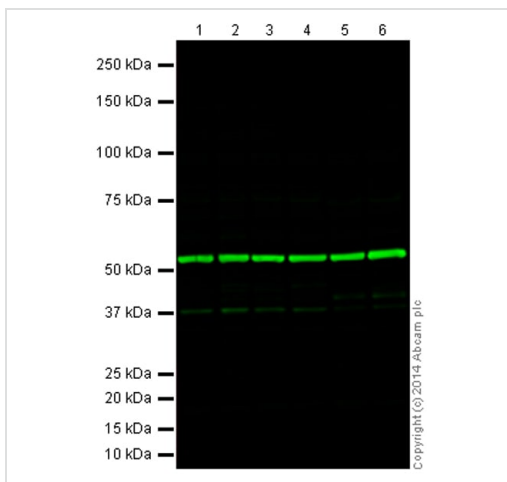
Lane 4 : PC12 (Rat adrenal gland pheochromocytoma cell line) Whole Cell Lysate

Lysates/proteins at 20 µg per lane.

Secondary

All lanes : Goat Anti-Mouse IgG H&L (Alexa Fluor® 790) (ab175783) at 1/10000 dilution

This blot was produced using a 4-12% Bis-tris gel under the MOPS buffer system. The gel was run at 200V for 50 minutes before being transferred onto a Nitrocellulose membrane at 30V for 70 minutes. The membrane was then blocked for an hour using 5% Milk before being incubated with **ab8226** overnight at 4°C. Antibody binding was detected using Goat Anti-Mouse IgG H&L (Alexa Fluor® 790) (ab175783) at a 1:10,000 dilution for 1hr at room temperature and then imaged using the Licor Odyssey CLx.



Western blot - Goat Anti-Mouse IgG H&L (Alexa Fluor® 790) (ab175783)

All lanes : Anti-alpha Tubulin antibody [DM1A] - Loading Control (**ab7291**) at 1/5000 dilution

Lane 1 : HeLa (Human epithelial cell line from cervix adenocarcinoma) Whole Cell Lysate

Lane 2 : HEK293 (Human epithelial cell line from embryonic kidney) Whole Cell Lysate

Lane 3 : HepG2 (Human liver hepatocellular carcinoma cell line) Whole Cell Lysate

Lane 4 : Caco 2 (Human colorectal adenocarcinoma cell line) Whole Cell Lysate

Lane 5 : NIH 3T3 (Mouse embryonic fibroblast cell line) Whole Cell Lysate

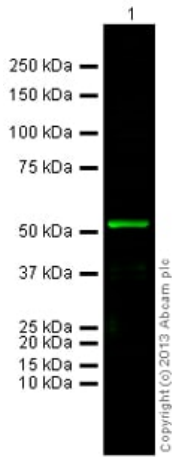
Lane 6 : PC12 (Rat adrenal gland pheochromocytoma cell line) Whole Cell Lysate

Lysates/proteins at 20 µg per lane.

Secondary

All lanes : Goat Anti-Mouse IgG H&L (Alexa Fluor® 790) (ab175783) at 1/10000 dilution

This blot was produced using a 4-12% Bis-tris gel under the MOPS buffer system. The gel was run at 200V for 50 minutes before being transferred onto a Nitrocellulose membrane at 30V for 70 minutes. The membrane was then blocked for an hour using Licor blocking buffer before being incubated with **ab7291** overnight at 4°C. Antibody binding was detected using Anti-Mouse Alexa Fluor® 790 (ab175783) at a 1:10,000 dilution for 1hr at room temperature and then imaged using the Licor Odyssey CLx.



Western blot - Goat Anti-Mouse IgG H&L (Alexa Fluor® 790) (ab175783)

Anti-alpha Tubulin antibody [DM1A] - Loading Control (**ab7291**) at 1 µg/ml + HeLa (Human epithelial carcinoma cell line) Whole Cell Lysate at 10 µg

Secondary

Goat Anti-Mouse IgG H&L (Alexa Fluor® 790) (ab175783) at 1/10000 dilution

Observed band size: 50 kDa

This blot was produced using a 4-12% Bis-tris gel under the MOPS buffer system. The gel was run at 200V for 50 minutes before being transferred onto a Nitrocellulose membrane at 30V for 70 minutes. The membrane was then blocked for an hour using 5% Milk before being incubated with **ab7291** overnight at 4°C. Antibody binding was detected using ab175783 at a 1:10,000 dilution for 1hr at room temperature and then imaged using the Licor Odyssey CLx.

Please note: All products are "FOR RESEARCH USE ONLY. NOT FOR USE IN DIAGNOSTIC PROCEDURES"

Our Abpromise to you: Quality guaranteed and expert technical support

- Replacement or refund for products not performing as stated on the datasheet
- Valid for 12 months from date of delivery
- Response to your inquiry within 24 hours
- We provide support in Chinese, English, French, German, Japanese and Spanish
- Extensive multi-media technical resources to help you
- We investigate all quality concerns to ensure our products perform to the highest standards

If the product does not perform as described on this datasheet, we will offer a refund or replacement. For full details of the Abpromise, please visit <https://www.abcam.com/abpromise> or contact our technical team.

Terms and conditions

- Guarantee only valid for products bought direct from Abcam or one of our authorized distributors