

Product datasheet

Goat Anti-Mouse IgG H&L (HRP) ab97023

★★★★☆ [4 Abreviews](#) [314 References](#) [3 Images](#)

Overview

Product name	Goat Anti-Mouse IgG H&L (HRP)
Host species	Goat
Target species	Mouse
Specificity	By immunoelectrophoresis and ELISA this antibody reacts specifically with Mouse IgG and with light chains common to other Mouse immunoglobulins. No antibody was detected against non immunoglobulin serum proteins.
Tested applications	Suitable for: ICC, IHC-P, ELISA, WB
Conjugation	HRP

Properties

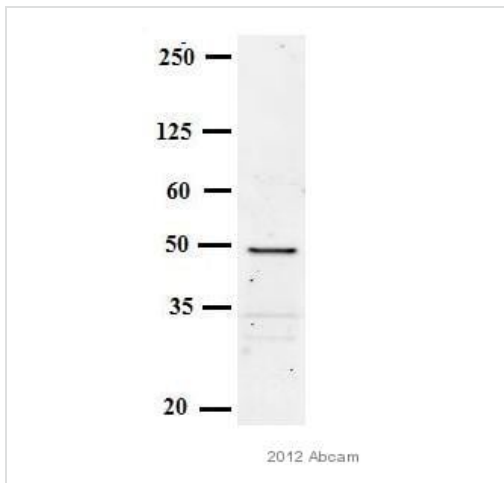
Form	Liquid
Storage instructions	Shipped at 4°C. Store at +4°C.
Storage buffer	pH: 6.8 Constituents: 0.2% BSA, 0.05% CMIT/MIT based preservative
Purity	Immunogen affinity purified
Purification notes	This antibody was isolated by affinity chromatography using antigen coupled to agarose beads and conjugated to Horse Radish Peroxidase (HRP).
Conjugation notes	Molar enzyme/ antibody protein ratio is 4:1
Clonality	Polyclonal
Isotype	IgG
General notes	Part of the AbExcel range.

Applications

The Abpromise guarantee Our **Abpromise guarantee** covers the use of ab97023 in the following tested applications. The application notes include recommended starting dilutions; optimal dilutions/concentrations should be determined by the end user.

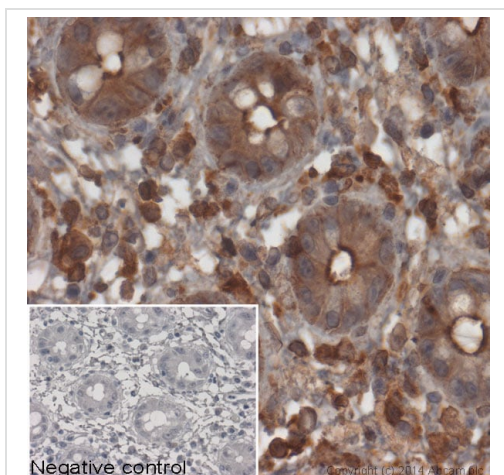
Application	Abreviews	Notes
ICC		Use at an assay dependent dilution.
IHC-P		1/200 - 1/5000.
ELISA	★★★★★ (1)	1/10000 - 1/100000.
WB	★★★★★ (3)	1/2000 - 1/20000.

Images



Western blot - Goat Anti-Mouse IgG H&L (HRP)
(ab97023)

This image is courtesy of an anonymous Abreview.

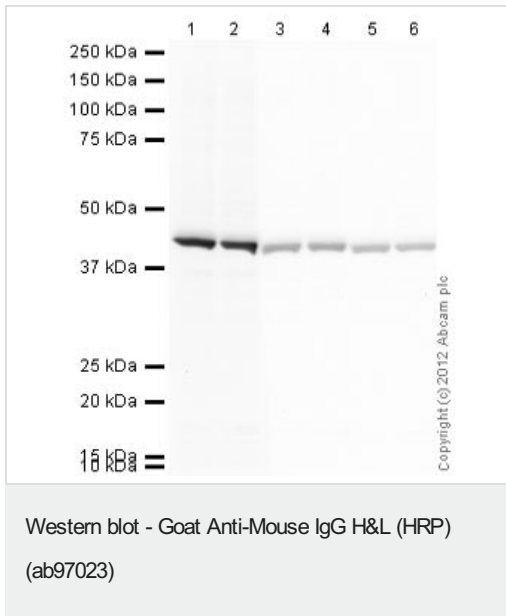


Immunohistochemistry (Formalin/PFA-fixed paraffin-embedded sections) - Goat Anti-Mouse IgG H&L (HRP) (ab97023)

IHC image of beta actin staining in human colon formalin fixed paraffin embedded tissue section*. The section was pre-treated using pressure cooker heat mediated antigen retrieval with sodium citrate buffer (pH6) for 30mins. The section was incubated with **ab8224**, 3µg/ml overnight at +4°C. An HRP-conjugated secondary (ab97023, 1/2000 dilution) was used for 1hr at room temperature. The section was counterstained with haematoxylin and mounted with DPX.

The inset negative control image is secondary-only at 1/500 dilution.

*Tissue obtained from the Human Research Tissue Bank, supported by the NIHR Cambridge Biomedical Research Centre



All lanes : Anti-beta Actin antibody [mAbcam 8226] - Loading Control (**ab8226**) at 1 µg/ml

Lanes 1-6 : HeLa (Human epithelial carcinoma cell line) Whole Cell Lysate
Lysates/proteins at 10 µg per lane.

Secondary

Lanes 1 - 2 : Goat polyclonal Secondary Antibody to Mouse IgG - H&L (HRP) (ab97023) at 1/2000 dilution

Lanes 3 - 4 : Goat polyclonal Secondary Antibody to Mouse IgG - H&L (HRP) (ab97023) at 1/10000 dilution

Lanes 5 - 6 : Goat polyclonal Secondary Antibody to Mouse IgG - H&L (HRP) (ab97023) at 1/20000 dilution

Developed using the ECL technique

Performed under reducing conditions.

Exposure time : 20 seconds

Please note: All products are "FOR RESEARCH USE ONLY. NOT FOR USE IN DIAGNOSTIC PROCEDURES"

Our Abpromise to you: Quality guaranteed and expert technical support

- Replacement or refund for products not performing as stated on the datasheet
- Valid for 12 months from date of delivery
- Response to your inquiry within 24 hours
- We provide support in Chinese, English, French, German, Japanese and Spanish
- Extensive multi-media technical resources to help you
- We investigate all quality concerns to ensure our products perform to the highest standards

If the product does not perform as described on this datasheet, we will offer a refund or replacement. For full details of the Abpromise, please visit <https://www.abcam.com/abpromise> or contact our technical team.

Terms and conditions

- Guarantee only valid for products bought direct from Abcam or one of our authorized distributors