

Product datasheet

Goat Anti-Rabbit IgG H&L (Alkaline Phosphatase) ab6722

[49 References](#) [5 Images](#)

Overview

| | |
|----------------------------|--|
| Product name | Goat Anti-Rabbit IgG H&L (Alkaline Phosphatase) |
| Host species | Goat |
| Target species | Rabbit |
| Tested applications | Suitable for: IHC-P, WB, ELISA, Dot blot, ICC/IF, IHC-Fr, ICC |
| Immunogen | Rabbit IgG whole molecule |
| Conjugation | Alkaline Phosphatase |

Properties

| | |
|-----------------------------|---|
| Form | Liquid |
| Storage instructions | Shipped at 4°C. Store at +4°C. |
| Storage buffer | Preservative: 0.1% Sodium azide Constituents: 0.00136% Zinc chloride, 0.0095% Magnesium chloride, 0.79% Tris HCl, 50% Glycerol, 0.87% Sodium chloride, 1% BSA |
| Purity | Affinity purified |
| Purification notes | This product was prepared from monospecific antiserum by immunoaffinity chromatography using Rabbit IgG coupled to agarose beads followed by solid phase adsorption(s) to remove any unwanted reactivities. |
| Conjugation notes | Alkaline Phosphatase (Calf Intestine) (Molecular Weight 140,000 daltons) |
| Clonality | Polyclonal |
| Isotype | IgG |

Applications

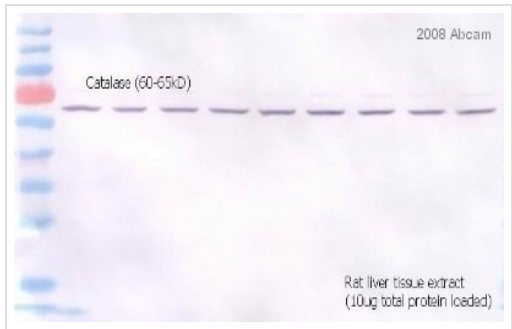
The Abpromise guarantee

Our **Abpromise guarantee** covers the use of ab6722 in the following tested applications.

The application notes include recommended starting dilutions; optimal dilutions/concentrations should be determined by the end user.

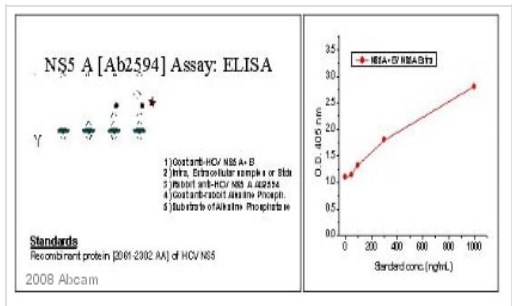
| Application | Abreviews | Notes |
|-------------|-----------|-------------------------------------|
| IHC-P | | Use at an assay dependent dilution. |
| WB | | 1/1000 - 1/4000. |
| ELISA | | 1/3000 - 1/5000. |
| Dot blot | | Use at an assay dependent dilution. |
| ICC/IF | | 1/200 - 1/1000. |
| IHC-Fr | | Use at an assay dependent dilution. |
| ICC | | Use at an assay dependent dilution. |

Images



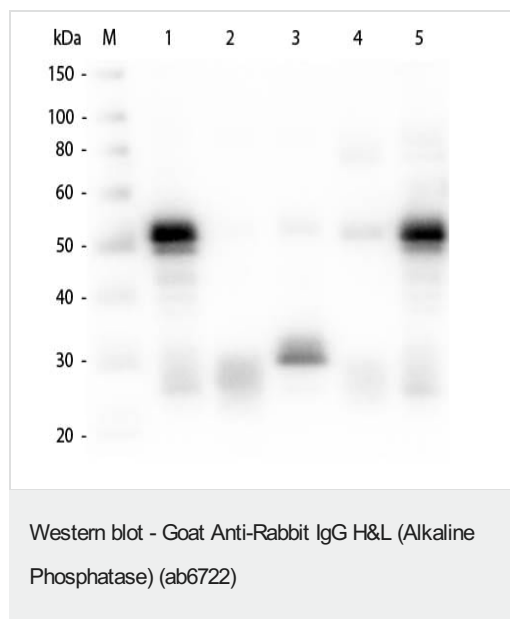
Western blot - Goat Anti-Rabbit IgG H&L (Alkaline Phosphatase) (ab6722)

ab6722 was used at dilution 1/10000 with the primary antibody **ab16731** in WB. See the review on **ab16731**.



ELISA - Goat Anti-Rabbit IgG H&L (Alkaline Phosphatase) (ab6722)

ab6722 was used with the primary antibody **ab2594** in ELISA. See Abreview on **ab2594**.



Western Blot of Anti-Rabbit IgG (H&L) (GOAT) Antibody.

Lane M: 3 μ l Molecular ladder.

Lane 1: Rabbit IgG whole molecule.

Lane 2: Rabbit IgG F(ab) Fragment.

Lane 3: Rabbit IgG F(c) Fragment.

Lane 4: Rabbit IgM Whole Molecule.

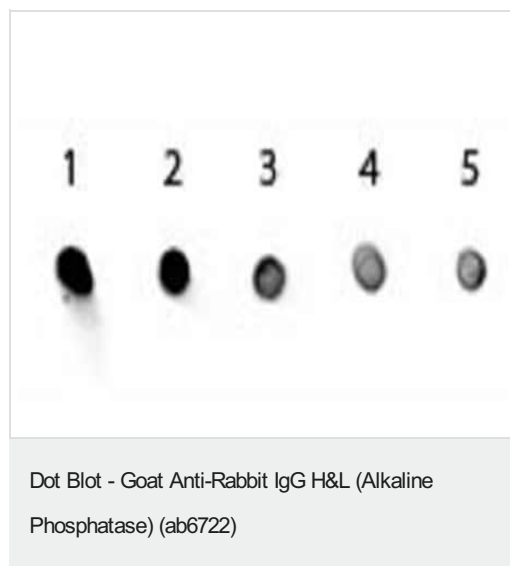
Lane 5: Normal Rabbit Serum.

All samples were reduced. Load: 50 ng per lane. Blocked for 30 min at RT.

Primary Antibody: Anti-Rabbit IgG (H&L) (GOAT) Antibody 1:1,000 for 60 min at RT. Secondary antibody: Anti-Goat IgG (DONKEY) Peroxidase Conjugated Antibody 1:40,000 for 30 min at RT.

Predicted/Obsevered Size: 25 and 50 kDa for Rabbit IgG and Serum, 25 kDa for F(c) and F(ab), 70 and 23 kDa for IgM.

Rabbit F(c) migrates slightly higher.



Dot Blot of ab6722.

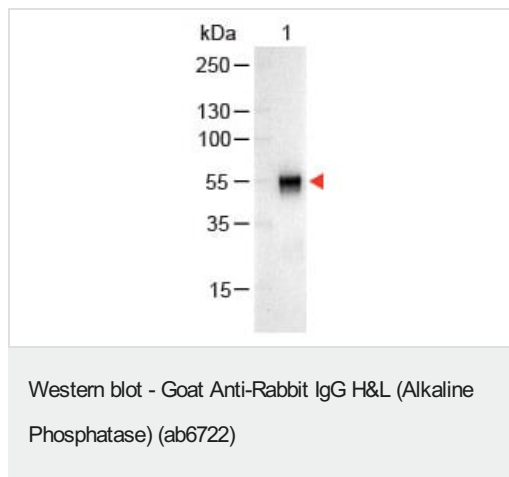
Antigen: Rabbit IgG.

Load: Lane 1 - 200ng; Lane 2 - 66.7ng; Lane 3 - 22.2ng; Lane 4 - 7.4ng; Lane 5 - 2.5ng.

Secondary antibody: ab6722 used at 1:1,000 for 60 min at RT.

Blocked for 60 min at RT.

Reaction visualized using alkaline phosphatase substrate for 30 seconds at RT.



Lane 1: Rabbit IgG.

Load: 100 ng per lane.

Secondary antibody: ab6722 used at 1:1,000 for 60 min at RT.

Blocked for 30 min at RT.

Predicted/Observed size: 55 and 28 kDa, 55 kDa for Rabbit IgG.

Please note: All products are "FOR RESEARCH USE ONLY. NOT FOR USE IN DIAGNOSTIC PROCEDURES"

Our Abpromise to you: Quality guaranteed and expert technical support

- Replacement or refund for products not performing as stated on the datasheet
- Valid for 12 months from date of delivery
- Response to your inquiry within 24 hours
- We provide support in Chinese, English, French, German, Japanese and Spanish
- Extensive multi-media technical resources to help you
- We investigate all quality concerns to ensure our products perform to the highest standards

If the product does not perform as described on this datasheet, we will offer a refund or replacement. For full details of the Abpromise, please visit <https://www.abcam.com/abpromise> or contact our technical team.

Terms and conditions

- Guarantee only valid for products bought direct from Abcam or one of our authorized distributors