

## Product datasheet

# Goat Anti-Rabbit IgG H&L (Biotin) ab6720

[164 References](#) [5 Images](#)

### Overview

<b>Product name</b>	Goat Anti-Rabbit IgG H&L (Biotin)
<b>Host species</b>	Goat
<b>Target species</b>	Rabbit
<b>Tested applications</b>	<b>Suitable for:</b> WB, ELISA, Immunomicroscopy, Dot blot, ICC/IF, IHC-Fr, IHC-P
<b>Immunogen</b>	Rabbit IgG whole molecule
<b>Conjugation</b>	Biotin

### Properties

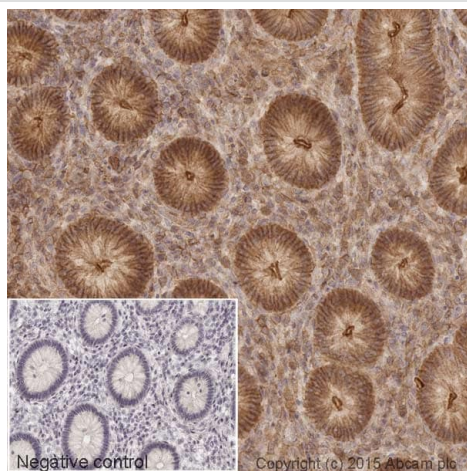
<b>Form</b>	Liquid
<b>Storage instructions</b>	Shipped at 4°C. Store at +4°C short term (1-2 weeks). Upon delivery aliquot. Store at -20°C or -80°C. Avoid freeze / thaw cycle.
<b>Storage buffer</b>	pH: 6.50 Preservative: 0.01% Sodium azide Constituents: 0.42% Tripotassium orthophosphate, 0.87% Sodium chloride, 1% BSA
<b>Purity</b>	Affinity purified
<b>Purification notes</b>	This product was prepared from monospecific antiserum by immunoaffinity chromatography using Rabbit IgG coupled to agarose beads followed by solid phase adsorption(s) to remove any unwanted reactivities.
<b>Conjugation notes</b>	Biotinamidocaproate N-Hydroxysuccinimide Ester (BAC) Biotin/Protein Ratio: 10-20 BAC molecules per Goat IgG molecule
<b>Clonality</b>	Polyclonal
<b>Isotype</b>	IgG

### Applications

**The Abpromise guarantee** Our **Abpromise guarantee** covers the use of ab6720 in the following tested applications. The application notes include recommended starting dilutions; optimal dilutions/concentrations should be determined by the end user.

Application	Abreviews	Notes
WB		1/5000 - 1/20000.
ELISA		1/50000 - 1/200000.
Immunomicroscopy		Use at an assay dependent concentration.
Dot blot		Use at an assay dependent concentration.
ICC/IF		1/1000 - 1/5000.
IHC-Fr		Use at an assay dependent concentration.
IHC-P		Use at an assay dependent dilution.

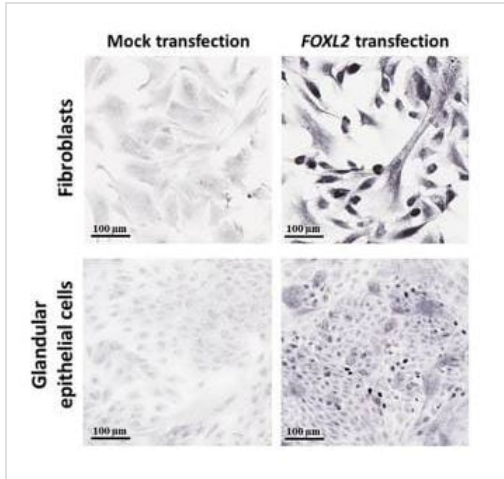
## Images



Immunohistochemistry (Formalin/PFA-fixed paraffin-embedded sections) - Goat Anti-Rabbit IgG H&L (Biotin) (ab6720)

IHC image of beta actin staining in a section of formalin-fixed paraffin-embedded [human normal colon]\*. The section was pre-treated using pressure cooker heat mediated antigen retrieval with sodium citrate buffer (pH6) for 30mins. The section was then incubated with [ab8227](#), 1/1000 dilution, for 15 mins at room temperature. A goat anti-rabbit biotinylated secondary antibody (ab6720, 1/1000 dilution) was used to detect the primary, and visualized using an HRP conjugated ABC system. Streptavidin HRP was used, [ab7403](#) at a 1/10000 dilution. DAB was used as the chromogen ([ab103723](#)), diluted 1/100 and incubated for 10min at room temperature. The section was then counterstained with haematoxylin and mounted with DPX. The inset negative control image is taken from an identical assay without primary antibody. For other IHC staining systems (automated and non-automated) customers should optimize variable parameters such as antigen retrieval conditions, primary antibody concentration and antibody incubation times.

\*Tissue obtained from the Human Research Tissue Bank, supported by the NIHR Cambridge Biomedical Research Centre

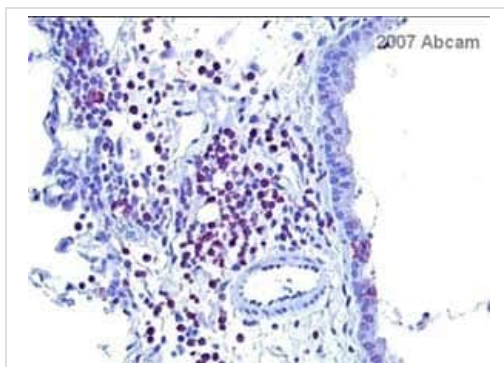


Immunocytochemistry/ Immunofluorescence - Goat  
Anti-Rabbit IgG H&L (Biotin) (ab6720)

Lesage-Padilla, A. et al PLoS One. 2017 Dec  
27;12(12):e0189942. doi:  
10.1371/journal.pone.0189942. eCollection 2017  
Reproduced under the Creative Commons license  
<http://creativecommons.org/licenses/by/4.0/>

ab6720 was used as secondary antibody at 1/1000 dilution for 1 hour at room temperature to detect FOXL2 in mock -transfected and FOXL2-transfected fibroblasts and glandular epithelial cells in ICC/IF. The primary antibody was a Rabbit Anti-FOXL2.

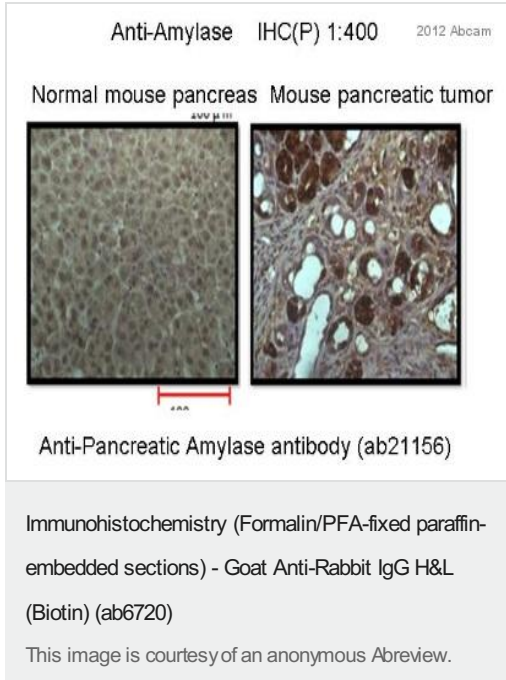
(From Figure 4B of Lesage-Padilla et al)



Immunohistochemistry (Formalin/PFA-fixed paraffin-  
embedded sections) - Goat Anti-Rabbit IgG H&L  
(Biotin) (ab6720)

This image is courtesy of an anonymous Abreview

**ab28829** (Rabbit polyclonal to STAT6 (phospho Y641)) at 1/100 staining mouse lung tissue sections by IHC-P. The tissue was formaldehyde fixed and blocked with serum. A heat mediated antigen retrieval step was performed prior to incubation with the antibody. Ab6720 (Goat polyclonal to Rabbit IgG H&L (biotin)) was used as the secondary antibody.



**ab21156** staining pancreatic amylase in mouse pancreas tissue sections by Immunohistochemistry (IHC-P - paraformaldehyde-fixed, paraffin-embedded sections). Tissue was fixed with paraformaldehyde and blocked with 4% serum for 30 minutes at 25°C; antigen retrieval was by heat mediation in a citrate buffer. Samples were incubated with primary antibody (1/500) for 16 hours at 4°C. A Biotin-conjugated Goat anti-rabbit IgG H&L (ab6720) (1/2000) was used as the secondary antibody.



ab6720 was used at dilution 1/100 with the primary antibody **ab15000** in IHC-Fr. See the review on **ab15000**.

**Please note:** All products are "FOR RESEARCH USE ONLY. NOT FOR USE IN DIAGNOSTIC PROCEDURES"

#### Our Abpromise to you: Quality guaranteed and expert technical support

- Replacement or refund for products not performing as stated on the datasheet
- Valid for 12 months from date of delivery

- Response to your inquiry within 24 hours
- We provide support in Chinese, English, French, German, Japanese and Spanish
- Extensive multi-media technical resources to help you
- We investigate all quality concerns to ensure our products perform to the highest standards

If the product does not perform as described on this datasheet, we will offer a refund or replacement. For full details of the Abpromise, please visit <https://www.abcam.com/abpromise> or contact our technical team.

#### **Terms and conditions**

---

- Guarantee only valid for products bought direct from Abcam or one of our authorized distributors