

Product datasheet

Goat Anti-Rabbit IgG H&L (Cy2 ®) preadsorbed ab6940

★★★★★ [1 Abreviews](#) [35 References](#) [3 Images](#)

Overview

Product name	Goat Anti-Rabbit IgG H&L (Cy2 ®) preadsorbed
Host species	Goat
Target species	Rabbit
Tested applications	Suitable for: WB, ICC/IF, IHC-P, IHC-Fr, ICC, Flow Cyt, ELISA
Minimal cross-reactivity	Chicken, Cow, Goat, Guinea pig, Hamster, Horse, Human, Mouse, Rat, Sheep more details
Immunogen	Full length native Rabbit IgG (purified).
Conjugation	Cy2 ®. Ex: 489nm, Em: 505nm

Properties

Form	Liquid
Storage instructions	Shipped at 4°C. Store at +4°C.
Storage buffer	Preservative: 0.01% Sodium azide Constituents: 0.42% Potassium phosphate, 0.87% Sodium chloride, 1% BSA
Purity	Immunogen affinity purified
Purification notes	This product was prepared from monospecific antiserum by immunoaffinity chromatography using Rabbit IgG coupled to agarose beads followed by solid phase adsorption(s) to remove any unwanted reactivities and extensive dialysis against the buffer stated above. Assay by immunoelectrophoresis resulted in a single precipitin arc against anti-Goat Serum, Rabbit IgG and Rabbit Serum.
Conjugation notes	Cy2 (Cyanine 2-OSu) (Molecular Weight 897 daltons) Absorption Wavelength: 489 nm Emission Wavelength: 505 nm Fluorochrome/Protein Ratio: 2.0 moles Cy2 per mole of Goat IgG
Clonality	Polyclonal
Isotype	IgG
General notes	This product or portions thereof is manufactured under license from Carnegie Mellon University under U.S. Patent Number 5,268,486 and related patents. Cy and CyDye are trademarks of GE Healthcare Limited. This material is also subject to proprietary rights of GE Healthcare Bio-Sciences Corp. and Carnegie Mellon University and made and sold under License from GE Healthcare Bio-Sciences Corp. This product is licensed for sale only for research. It is NOT licensed for any other use. There is no implied license hereunder for any commercial use.

COMMERCIAL USE shall include: 1 Sale, lease, license or other transfer of the material or any material derived or produced from it. 2 Sale, lease, license or other grant of rights to use this material or any material derived or produced from it. 3 Use of this material to perform services for a fee for third parties. If you require a commercial license to use this material and do not have one, please return this material, unopened to Abcam Plc of 330 Cambridge Science Park, Cambridge, CB4 0FL, and any money paid for the material will be refunded.

This secondary antibody is specifically designed for the detection of multiple primary antibodies (polyclonal or monoclonal) of different host species in experiments where cells are simultaneously labeled without unwanted cross reaction.

Applications

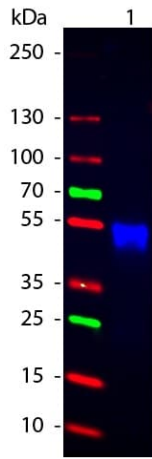
The Abpromise guarantee

Our **Abpromise guarantee** covers the use of ab6940 in the following tested applications.

The application notes include recommended starting dilutions; optimal dilutions/concentrations should be determined by the end user.

Application	Abreviews	Notes
WB		Use at an assay dependent dilution.
ICC/IF		1/1000 - 1/5000.
IHC-P		Use at an assay dependent concentration.
IHC-Fr		Use at an assay dependent concentration.
ICC	★★★★★ (1)	Use at an assay dependent concentration.
Flow Cyt		Use at an assay dependent dilution.
ELISA		1/10000 - 1/50000.

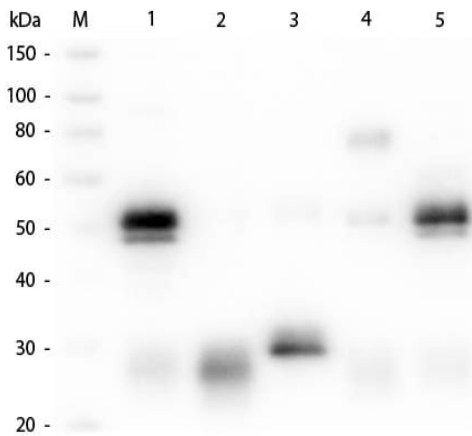
Images



Western blot - Goat Anti-Rabbit IgG H&L (Cy2®) preadsorbed (ab6940)

Goat Anti-Rabbit IgG H&L (Cy2®) preadsorbed (ab6940) at 1/1000 dilution + Rabbit IgG at 0.05 µg

Incubated with ab6940 for 1 hour at room temperature.



Western blot - Goat Anti-Rabbit IgG H&L (Cy2®) preadsorbed (ab6940)

All lanes : Goat Anti-Rabbit IgG H&L (Cy2®) preadsorbed (ab6940) at 1/1000 dilution

Lane 1 : Rabbit IgG whole molecule

Lane 2 : Rabbit IgG F(ab) fragment

Lane 3 : Rabbit IgG F(c) fragment

Lane 4 : Rabbit IgM whole molecule

Lane 5 : Normal rabbit serum

Lysates/proteins at 0.05 µg per lane.

Secondary

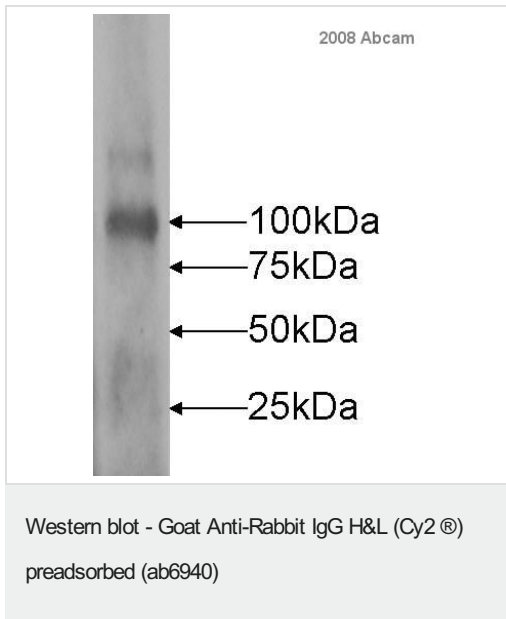
All lanes : Peroxidase-conjugated donkey anti-goat IgG at 1/40000 dilution

Performed under reducing conditions.

Observed band size: 23,25,50,70 kDa

Incubated with the primary antibody for 1 hour at room temperature.

Incubated with the secondary antibody for 30 minutes at room temperature.



ab6940 was used at dilution 1/10000 with the primary antibody **ab47840** in WB. See the review on **ab47840**.

Please note: All products are "FOR RESEARCH USE ONLY. NOT FOR USE IN DIAGNOSTIC PROCEDURES"

Our Abpromise to you: Quality guaranteed and expert technical support

- Replacement or refund for products not performing as stated on the datasheet
- Valid for 12 months from date of delivery
- Response to your inquiry within 24 hours
- We provide support in Chinese, English, French, German, Japanese and Spanish
- Extensive multi-media technical resources to help you
- We investigate all quality concerns to ensure our products perform to the highest standards

If the product does not perform as described on this datasheet, we will offer a refund or replacement. For full details of the Abpromise, please visit <https://www.abcam.com/abpromise> or contact our technical team.

Terms and conditions

- Guarantee only valid for products bought direct from Abcam or one of our authorized distributors