

Product datasheet

Goat Anti-Rabbit IgG H&L (HRP) ab97051

★★★★★ [10 Abreviews](#) [943 References](#) [7 Images](#)

Overview

Product name	Goat Anti-Rabbit IgG H&L (HRP)
Host species	Goat
Target species	Rabbit
Specificity	By immunoelectrophoresis and ELISA this antibody reacts specifically with Rabbit IgG and with light chains common to other Rabbit immunoglobulins. No antibody was detected against non-immunoglobulin serum proteins.
Tested applications	Suitable for: ICC, IHC-P, ELISA, WB
Conjugation	HRP

Properties

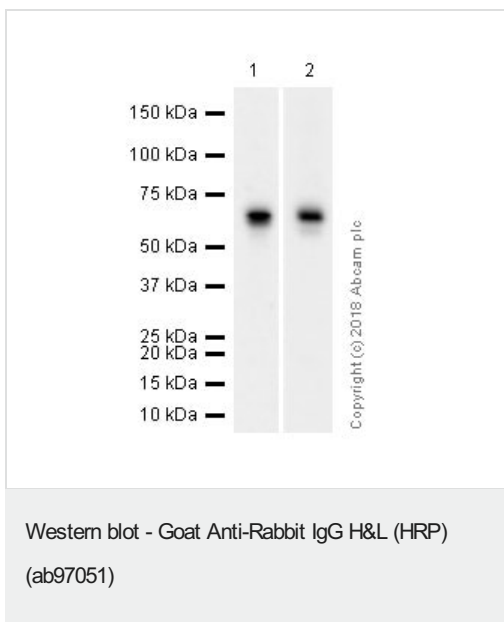
Form	Liquid
Storage instructions	Shipped at 4°C. Store at +4°C.
Storage buffer	pH: 6.80 Constituents: 0.2% BSA, PBS, 0.05% CMIT/MIT based preservative
Purity	Immunogen affinity purified
Purification notes	This antibody was isolated by affinity chromatography using antigen coupled to agarose beads and conjugated to Horse Radish Peroxidase (HRP).
Conjugation notes	Molar enzyme/ antibody protein ratio is 4:1
Clonality	Polyclonal
Isotype	IgG
General notes	Part of the AbExcel range.

Applications

The Abpromise guarantee Our **Abpromise guarantee** covers the use of ab97051 in the following tested applications. The application notes include recommended starting dilutions; optimal dilutions/concentrations should be determined by the end user.

Application	Abreviews	Notes
ICC		Use at an assay dependent concentration.
IHC-P		1/200 - 1/5000.
ELISA		1/10000 - 1/100000.
WB	★★★★★ (10)	1/2000 - 1/20000. Colorimetric: 1/5000 - 1/30000; Chemiluminescent: 1/10000 - 1/50000

Images



All lanes : Anti-Estrogen Receptor alpha antibody [E115] - ChIP Grade ([ab32063](#)) at 1/1000 dilution

Lane 1 : Rat pituitary whole tissue lysate

Lane 2 : Mouse pituitary whole tissue lysate

Lysates/proteins at 20 µg per lane.

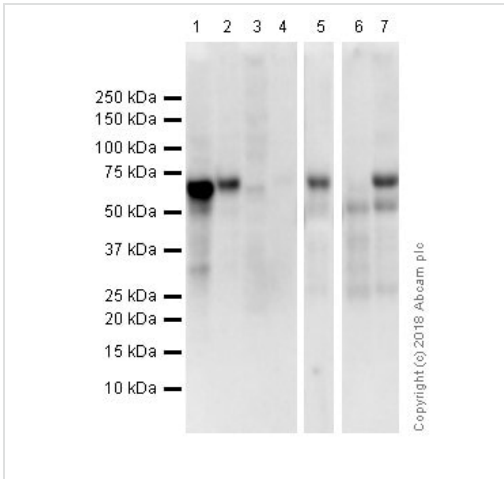
Secondary

All lanes : Goat Anti-Rabbit IgG H&L (HRP) (ab97051) at 1/20000 dilution

Exposure time: 1st lane: 85 seconds

2nd lane: 32 seconds

Blocking and diluting buffer: 5% NFDm/TBST



Western blot - Goat Anti-Rabbit IgG H&L (HRP) (ab97051)

All lanes : Anti-Estrogen Receptor alpha antibody [E115] - ChIP Grade (**ab32063**) at 1/1000 dilution

Lane 1 : MCF7 (Human breast adenocarcinoma epithelial cell). Whole cell lysates

Lane 2 : T-47D (human mammary gland ductal carcinoma epithelial cell). Whole cell lysates

Lane 3 : MDA-MB231 (Human breast adenocarcinoma epithelial cell) Whole cell lysates (Negative control)

Lane 4 : HepG2 (Human hepatocellular carcinoma epithelial cell) Whole cell lysates (Negative control)

Lane 5 : Human uterus whole tissue lysate

Lane 6 : Human ovary whole tissue lysate

Lane 7 : Human ovary cancer whole tissue lysate

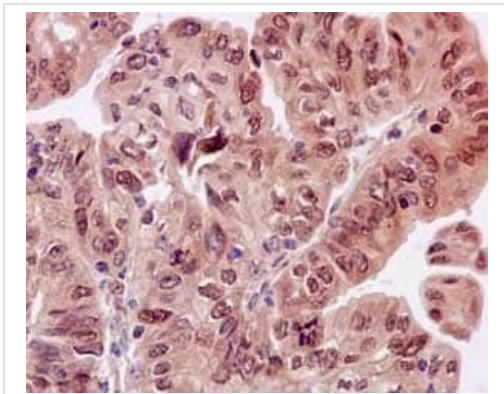
Lysates/proteins at 20 µg per lane.

Secondary

All lanes : Goat Anti-Rabbit IgG H&L (HRP) (ab97051) at 1/20000 dilution

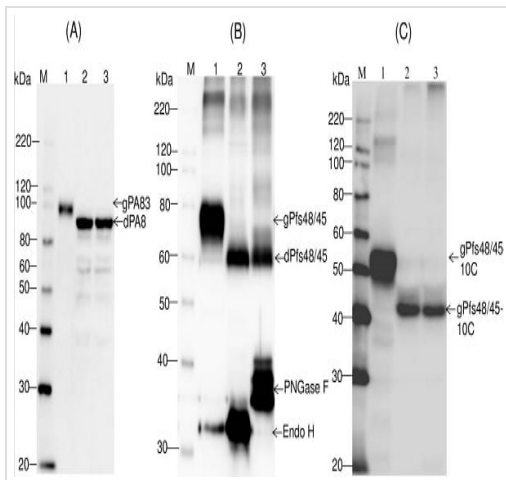
Exposure time: 50 seconds

Blocking and diluting buffer: 5% NFDm/TBST.



Immunohistochemistry (Formalin/PFA-fixed paraffin-embedded sections) - Goat Anti-Rabbit IgG H&L (HRP) (ab97051)

Immunohistochemical staining of paraffin embedded human endometrial carcinoma with purified **ab32063** at a working dilution of 1 in 200. The secondary antibody used is ab97051, a HRP goat anti-rabbit IgG (H+L), at 1/500. The sample is counter-stained with hematoxylin. Antigen retrieval was performed using Tris-EDTA buffer, pH 9.0.



Western blot - Goat Anti-Rabbit IgG H&L (HRP) (ab97051)

Mamedov et al PLoS One. 2017 Aug 21;12(8):e0183589. doi: 10.1371/journal.pone.0183589. eCollection 2017. Fig 4. Reproduced under the Creative Commons license <http://creativecommons.org/licenses/by/4.0/>

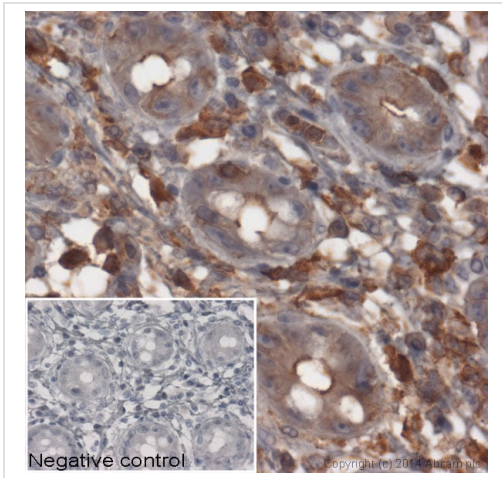
Western blot analysis of co-expression *Bacillus anthracis* PA83 (A), Pfs48/45 (B) and Pfs48/45-10C with bacterial Endo H or PNGase F in *N. benthamiana* plants.

(A) Western blot analysis of co-expression of PA83. Lanes: 1- *N. benthamiana* plant was infiltrated with pBI-PA83 construct, for the production of glycosylated PA83, 2,3- *N. benthamiana* plants were infiltrated with combinations of the pBI-Endo H/pBI-PA83 or pBI-PNGase F/pBI-PA83 constructs, for the production of Endo H (2) or PNGase F (3) deglycosylated PA83 proteins.

(B) Western blot analysis of co-expression of Pfs48/45. Lanes: 1- *N. benthamiana* plant was infiltrated with pEAQ-Pfs48/45 construct for the production of glycosylated Pfs48/45; 2,3- *N. benthamiana* plants were infiltrated with combinations of the pBI-Endo H/pEAQ-Pfs48/45 or pBI-PNGase F/pEAQ-Pfs48/45 constructs for the production of Endo H (2) and PNGase F (3) deglycosylated Pfs48/45 proteins.

(C) Western blot analysis of co-expression of Pfs48/45-10C. Lanes: 1- *N. benthamiana* plant was infiltrated with pEAQ-Pfs48/45-10C construct for the production of glycosylated Pfs48/45-10C; 2,3- *N. benthamiana* plants were infiltrated with combinations of the pBI-Endo H/pEAQ-Pfs48/45 or pBI-PNGase F/pEAQ-Pfs48/45 constructs for the production of Endo H (2) and PNGase F (3) deglycosylated Pfs48/45-10C proteins. gPA83- glycosylated PA83; dPA83- deglycosylated PA83; gPfs48/45: glycosylated Pfs48/45; dPfs48/45: deglycosylated Pfs48/45; gPfs48/45-10C: glycosylated Pfs48/45-10C; dPfs48/45-10C: deglycosylated Pfs48/45-10C.

M: MagicMark XP Western Protein Standard. PA83 proteins were detected using the anti-*Bacillus anthracis* protective antigen antibody BAP0101 (Cat. No. **ab1988**, Abcam); Pfs48/45, Endo H or PNGase F proteins were detected using the anti-FLAG antibody. Pfs48/45-10C protein was detected using the purified anti-His Tag antibody.



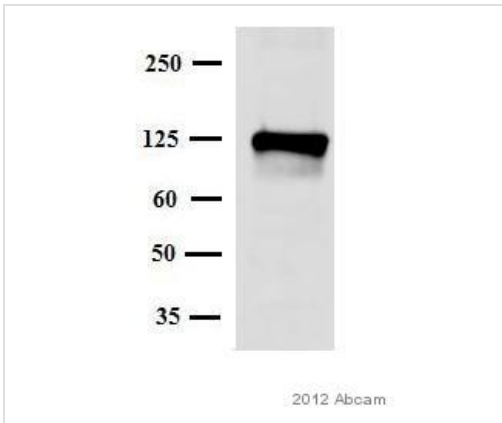
Immunohistochemistry (Formalin/PFA-fixed paraffin-embedded sections) - Goat Anti-Rabbit IgG H&L (HRP) (ab97051)

IHC image of beta Actin staining in normal human colon, formalin-fixed and paraffin-embedded tissue*.

The section was pre-treated using pressure cooker heat mediated antigen retrieval with sodium citrate buffer (pH 6) for 30mins. The section was incubated with **ab8227**, 3 µg/ml overnight at +4°C. An HRP-conjugated secondary (ab97051, 1/2000 dilution) was used for 1hr at room temperature. The section was counterstained with hematoxylin and mounted with DPX.

The inset **negative control** image is secondary-only at 1/500 dilution.

*Tissue obtained from the Human Research Tissue Bank, supported by the NIHR Cambridge Biomedical Research Centre



Western blot - Goat Anti-Rabbit IgG H&L (HRP) (ab97051)

This image is courtesy of an anonymous Abreview.

Anti-LAMP2 antibody (**ab37024**) at 1/1000 dilution + Mouse brain whole tissue lysate at 30 µg

Secondary

Goat Anti-Rabbit IgG H&L (HRP) (ab97051) at 1/5000 dilution

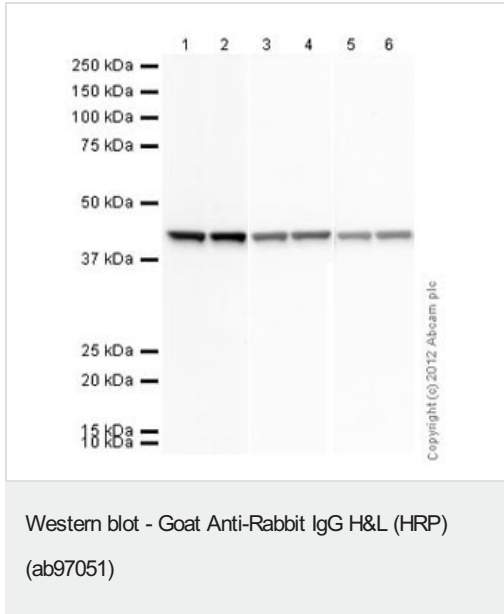
Developed using the ECL technique.

Performed under reducing conditions.

Exposure time: 1 minute

10 % gel. Blocked with 5% BSA for 2 hours at 25°C.

Incubated with the primary antibody for 1 hour in TBS-tween at 25°C.



All lanes : Anti-beta Actin antibody ([ab8227](#)) at 1 µg/ml

All lanes : HeLa (Human epithelial carcinoma cell line) Whole Cell Lysate

Lysates/proteins at 10 µg per lane.

Secondary

Lanes 1-2 : Rabbit polyclonal to GNAT2 ([ab97501](#)) at 1/2000 dilution

Lanes 3-4 : Goat Anti-Rabbit IgG H&L (HRP) (ab97051) at 1/10000 dilution

Lanes 5-6 : Goat Anti-Rabbit IgG H&L (HRP) (ab97051) at 1/20000 dilution

Developed using the ECL technique.

Performed under reducing conditions.

Exposure time: 10 seconds

Please note: All products are "FOR RESEARCH USE ONLY. NOT FOR USE IN DIAGNOSTIC PROCEDURES"

Our Abpromise to you: Quality guaranteed and expert technical support

- Replacement or refund for products not performing as stated on the datasheet
- Valid for 12 months from date of delivery
- Response to your inquiry within 24 hours
- We provide support in Chinese, English, French, German, Japanese and Spanish
- Extensive multi-media technical resources to help you
- We investigate all quality concerns to ensure our products perform to the highest standards

If the product does not perform as described on this datasheet, we will offer a refund or replacement. For full details of the Abpromise, please visit <https://www.abcam.com/abpromise> or contact our technical team.

Terms and conditions

- Guarantee only valid for products bought direct from Abcam or one of our authorized distributors