

Product datasheet

Goat Anti-Rabbit IgG H&L (PE) preadsorbed ab72465

★★★★★ [1 Abreviews](#) [17 References](#) [2 Images](#)

Overview

Product name	Goat Anti-Rabbit IgG H&L (PE) preadsorbed
Host species	Goat
Target species	Rabbit
Tested applications	Suitable for: Flow Cyt, ELISA
Minimal cross-reactivity	Cow, Mouse more details
Immunogen	Rabbit IgG
Conjugation	PE. Ex: 488nm, Em: 575nm

Properties

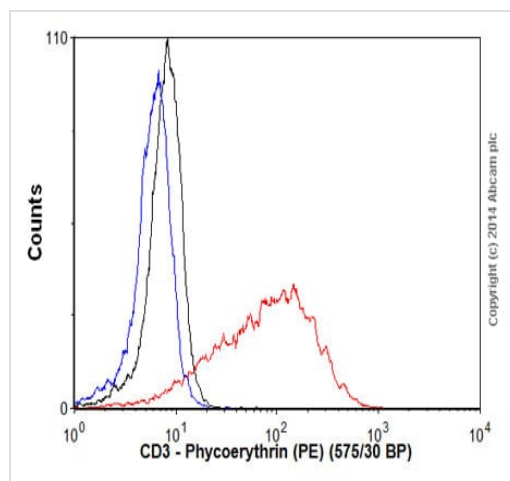
Form	Liquid
Storage instructions	Shipped at 4°C. Store at +4°C.
Storage buffer	pH: 7.40 Preservative: 0.01% Sodium azide Constituents: 0.1% BSA, 0.87% Sodium chloride, 1.71% Sucrose, 0.27% sodium dihydrogen phosphate, 1.09% disodium hydrogen phosphate
Purity	Size exclusion
Purification notes	Size exclusion chromatography as well as some proprietary methods for purifying the final materials were used.
Conjugation notes	Excitation max. 565>498 nm. Emission max. 578 nm. F/P 0.8:1.
Clonality	Polyclonal
Isotype	IgG

Applications

The Abpromise guarantee Our [Abpromise guarantee](#) covers the use of ab72465 in the following tested applications. The application notes include recommended starting dilutions; optimal dilutions/concentrations should be determined by the end user.

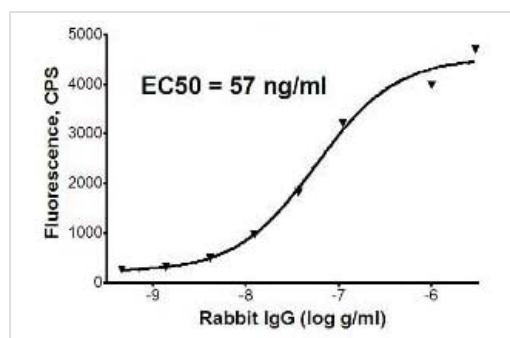
Application	Abreviews	Notes
Flow Cyt	★★★★★ (1)	1/500 - 1/1000.
ELISA		Use at an assay dependent concentration.

Images



Flow Cytometry - Goat Anti-Rabbit IgG H&L
(Phycoerythrin) preadsorbed (ab72465)

Overlay histogram showing Jurkat cells stained with **ab16669** (red line). The cells were fixed with 4% paraformaldehyde (10 min) and then permeabilized with 0.1% PBS-Tween for 20 min. The cells were then incubated in 1x PBS / 10% normal goat serum / 0.3M glycine to block non-specific protein-protein interactions followed by the antibody (**ab16669**, 1/1000 dilution) for 30 min at 22°C. The secondary antibody Goat anti-rabbit IgG H&L (Phycoerythrin, pre-adsorbed) (ab72465) was used at 1/1000 dilution for 30 min at 22°C. Isotype control antibody (black line) was rabbit IgG (monoclonal) (0.1 µg/1x10⁶ cells) used under the same conditions. Unlabelled sample (blue line) was also used as a control. Acquisition of >5,000 events were collected using a 20mW Argon ion laser (488nm) and 575/30 bandpass filter.



Sandwich ELISA - Goat Anti-Rabbit IgG H&L
(Phycoerythrin) preadsorbed (ab72465)

Sandwich ELISA to detect Rabbit IgG. Curve generated from a streptavidin-coated 96-well plate probed with dilutions of biotinylated Rabbit IgG and read after a 2 hour incubation at room temperature with ab72465

Please note: All products are "FOR RESEARCH USE ONLY. NOT FOR USE IN DIAGNOSTIC PROCEDURES"

Our Abpromise to you: Quality guaranteed and expert technical support

- Replacement or refund for products not performing as stated on the datasheet
- Valid for 12 months from date of delivery
- Response to your inquiry within 24 hours
- We provide support in Chinese, English, French, German, Japanese and Spanish

- Extensive multi-media technical resources to help you
- We investigate all quality concerns to ensure our products perform to the highest standards

If the product does not perform as described on this datasheet, we will offer a refund or replacement. For full details of the Abpromise, please visit <https://www.abcam.com/abpromise> or contact our technical team.

Terms and conditions

- Guarantee only valid for products bought direct from Abcam or one of our authorized distributors