

## Product datasheet

# Goat Anti-Rat IgG H&L (Alexa Fluor® 568) preadsorbed ab175710

[8 References](#) [3 Images](#)

### Overview

<b>Product name</b>	Goat Anti-Rat IgG H&L (Alexa Fluor® 568) preadsorbed
<b>Host species</b>	Goat
<b>Target species</b>	Rat
<b>Specificity</b>	By immunoelectrophoresis and ELISA this antibody reacts specifically with rat IgG and with light chain common to other rat immunoglobulins. No antibody was detected against non-immunoglobulin serum proteins. Less than 1% cross reactivity to bovine, chicken, human, mouse, rabbit and sheep IgG was detected. This antibody may cross react with IgG from other species.
<b>Tested applications</b>	<b>Suitable for:</b> IHC-Fr, Flow Cyt, ICC/IF, IHC-P, ELISA
<b>Minimal cross-reactivity</b>	Chicken, Cow, Human, Mouse, Rabbit, Sheep <a href="#">more details</a>
<b>Immunogen</b>	The details of the immunogen for this antibody are not available.
<b>Conjugation</b>	Alexa Fluor® 568. Ex: 578nm, Em: 603nm

### Properties

<b>Form</b>	Liquid
<b>Storage instructions</b>	Shipped at 4°C. Store at +4°C short term (1-2 weeks). Upon delivery aliquot. Store at -20°C. Avoid freeze / thaw cycle. Stable for 12 months at -20°C. Store In the Dark.
<b>Storage buffer</b>	Preservative: 0.02% Sodium azide Constituents: 23% Glycerol (glycerin, glycerine), PBS, 1% BSA
<b>Purity</b>	Immunogen affinity purified
<b>Purification notes</b>	Antiserum was cross adsorbed using bovine, chicken, human, mouse, rabbit and sheep immunosorbents to remove cross reactive antibodies. The antibody to rat IgG was isolated by affinity chromatography using antigen coupled to agarose beads.
<b>Clonality</b>	Polyclonal
<b>Isotype</b>	IgG
<b>General notes</b>	Alexa Fluor® is a registered trademark of Molecular Probes, Inc, a Thermo Fisher Scientific Company. The Alexa Fluor® dye included in this product is provided under an intellectual property license from Life Technologies Corporation. As this product contains the Alexa Fluor® dye, the

purchase of this product conveys to the buyer the non-transferable right to use the purchased product and components of the product only in research conducted by the buyer (whether the buyer is an academic or for-profit entity). As this product contains the Alexa Fluor® dye the sale of this product is expressly conditioned on the buyer not using the product or its components, or any materials made using the product or its components, in any activity to generate revenue, which may include, but is not limited to use of the product or its components: in manufacturing; (ii) to provide a service, information, or data in return for payment (iii) for therapeutic, diagnostic or prophylactic purposes; or (iv) for resale, regardless of whether they are sold for use in research. For information on purchasing a license to this product for purposes other than research, contact Life Technologies Corporation, 5781 Van Allen Way, Carlsbad, CA 92008 USA or [outlicensing@thermofisher.com](mailto:outlicensing@thermofisher.com).

## Applications

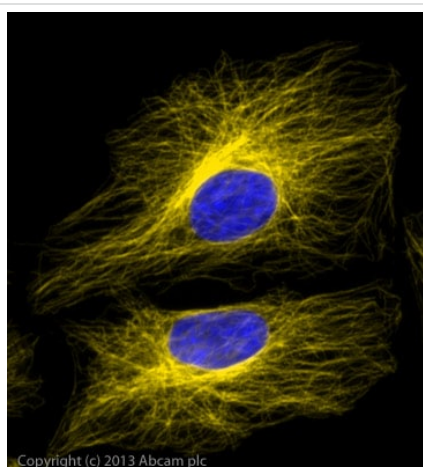
### The Abpromise guarantee

Our **Abpromise guarantee** covers the use of ab175710 in the following tested applications.

The application notes include recommended starting dilutions; optimal dilutions/concentrations should be determined by the end user.

Application	Abreviews	Notes
IHC-Fr		Use at an assay dependent concentration.
Flow Cyt		1/2000.
ICC/IF		1/200 - 1/1000.
IHC-P		Use at an assay dependent concentration.
ELISA		Use at an assay dependent concentration.

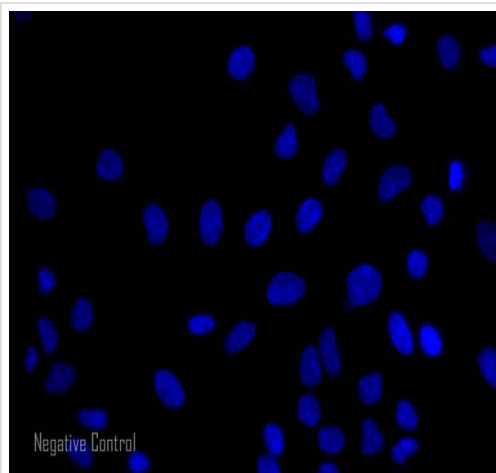
## Images



ICC/IF image of **ab6160** stained HeLa cells. The cells were 100% methanol fixed (5 min) and then incubated in 1%BSA / 10% normal goat serum / 0.3M glycine in 0.1% PBS-Tween for 1h to permeabilise the cells and block non-specific protein-protein interactions. The cells were then incubated with the antibody (**ab6160**, 1µg/ml) overnight at +4°C. The secondary antibody (yellow) was ab175710 Alexa Fluor® 568 Goat anti-Rat IgG (H&L) used at 1µg/ml for 1h. DAPI was used to stain the cell nuclei (blue) at a concentration of 1.43µM.

Alexa Fluor® 568 is pseudocolored in yellow.

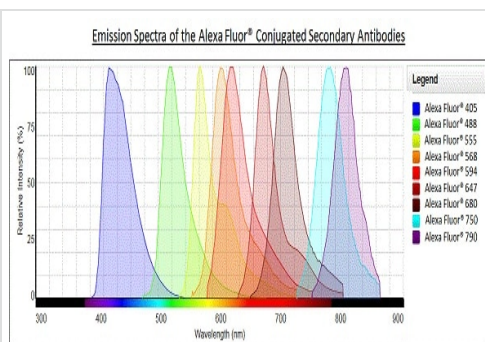
Immunocytochemistry/ Immunofluorescence - Goat Anti-Rat IgG H&L (Alexa Fluor® 568) preadsorbed (ab175710)



Immunocytochemistry/ Immunofluorescence - Goat  
Anti-Rat IgG H&L (Alexa Fluor® 568) preadsorbed  
(ab175710)

HeLa cells showing negative staining by ICC/IF using only secondary antibody. The cells were 100% methanol fixed (5 min) and then incubated in 1%BSA / 10% normal goat serum / 0.3M glycine in 0.1% PBS-Tween for 1h to permeabilise the cells and block non-specific protein-protein interactions. The secondary antibody (yellow) was ab175710 Alexa Fluor® 568 Goat anti-Rat IgG (H&L) used at 1µg/ml for 1h. DAPI was used to stain the cell nuclei (blue) at a concentration of 1.43µM.

Alexa Fluor® 568 is pseudocolored in yellow.



Alexa Fluor® - Goat Anti-Rat IgG H&L (Alexa Fluor®  
568) preadsorbed (ab175710)

**Please note:** All products are "FOR RESEARCH USE ONLY. NOT FOR USE IN DIAGNOSTIC PROCEDURES"

### Our Abpromise to you: Quality guaranteed and expert technical support

- Replacement or refund for products not performing as stated on the datasheet
- Valid for 12 months from date of delivery
- Response to your inquiry within 24 hours
- We provide support in Chinese, English, French, German, Japanese and Spanish
- Extensive multi-media technical resources to help you
- We investigate all quality concerns to ensure our products perform to the highest standards

If the product does not perform as described on this datasheet, we will offer a refund or replacement. For full details of the Abpromise, please visit <https://www.abcam.com/abpromise> or contact our technical team.

## Terms and conditions

---

- Guarantee only valid for products bought direct from Abcam or one of our authorized distributors