

Product datasheet

Mouse monoclonal [SB62a] Anti-Rabbit IgG light chain (Alkaline Phosphatase) ab99696

[2 References](#) [2 Images](#)

Overview

Product name	Mouse monoclonal [SB62a] Anti-Rabbit IgG light chain (Alkaline Phosphatase)
Host species	Mouse
Target species	Rabbit
Specificity	ab99696 reacts with the light chain of native Rabbit IgG primary antibodies and does not bind to the reduced and denatured Rabbit IgG heavy chain band (50 kD).
Tested applications	Suitable for: ELISA, WB
Immunogen	Full length protein corresponding to Rabbit IgG Light chain. Rabbit Light Chain
Conjugation	Alkaline Phosphatase

Properties

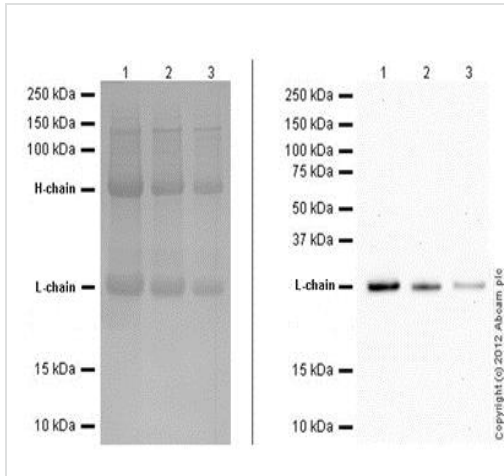
Form	Liquid
Storage instructions	Shipped at 4°C. Store at +4°C short term (1-2 weeks). Upon delivery aliquot. Store at -20°C long term. Avoid freeze / thaw cycle.
Storage buffer	pH: 8.00 Preservative: 0.1% Sodium azide Constituents: 50% Glycerol (glycerin, glycerine), 0.0095% Magnesium chloride, 0.605% Tris
Purity	Protein A purified
Clonality	Monoclonal
Clone number	SB62a
Isotype	IgG2b
Light chain type	lambda

Applications

The Abpromise guarantee Our **Abpromise guarantee** covers the use of ab99696 in the following tested applications. The application notes include recommended starting dilutions; optimal dilutions/concentrations should be determined by the end user.

Application	Abreviews	Notes
ELISA		1/2000 - 1/4000.
WB		Use at an assay dependent concentration.

Images



Western blot - Mouse monoclonal [SB62a] Anti-Rabbit IgG light chain (Alkaline Phosphatase) (ab99696)

Western blot showing that Mouse monoclonal [SB62a] Secondary Antibody to Rabbit IgG light chain (AP) (ab99696) specifically binds to light-chains

Left blot: Coomassie stain showing the rabbit heavy (~50kDa) and light-chains (~25 kDa)

Lane 1: 10 µg rabbit monoclonal was loaded

Lane 2: 5 µg rabbit monoclonal was loaded

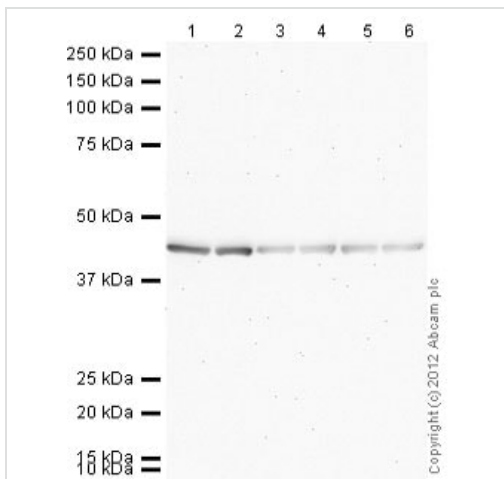
Lane 3: 2 µg rabbit monoclonal was loaded

Right blot: WB using Mouse monoclonal [SB62a] Secondary Antibody to Rabbit IgG light chain (AP) (ab99696) as secondary antibody at 1/10,000

Lane 1: 1 µg rabbit monoclonal was loaded

Lane 2: 0.5 µg rabbit monoclonal was loaded

Lane 3: 0.25 µg rabbit monoclonal was loaded



Western blot - Mouse monoclonal [SB62a] Anti-Rabbit IgG light chain (Alkaline Phosphatase) (ab99696)

All lanes : Anti-beta Actin antibody [mAbcam 8226] - Loading Control ([ab8226](#)) at 1 µg/ml

Lanes 1-6 : HeLa (Human epithelial carcinoma cell line) Whole Cell Lysate

Lysates/proteins at 10 µg per lane.

Secondary

Lanes 1 - 2 : Mouse monoclonal [SB62a] Secondary Antibody to Rabbit IgG - light chain (AP) (ab99696) at 1/5000 dilution

Lanes 3 - 4 : Mouse monoclonal [SB62a] Secondary Antibody to Rabbit IgG - light chain (AP) (ab99696) at 1/20000 dilution

Lanes 5 - 6 : Mouse monoclonal [SB62a] Secondary Antibody to Rabbit IgG - light chain (AP) (ab99696) at 1/50000 dilution

Developed using the ECL technique.

Performed under reducing conditions.

Please note: All products are "FOR RESEARCH USE ONLY. NOT FOR USE IN DIAGNOSTIC PROCEDURES"

Our Abpromise to you: Quality guaranteed and expert technical support

- Replacement or refund for products not performing as stated on the datasheet
- Valid for 12 months from date of delivery
- Response to your inquiry within 24 hours

- We provide support in Chinese, English, French, German, Japanese and Spanish
- Extensive multi-media technical resources to help you
- We investigate all quality concerns to ensure our products perform to the highest standards

If the product does not perform as described on this datasheet, we will offer a refund or replacement. For full details of the Abpromise, please visit <https://www.abcam.com/abpromise> or contact our technical team.

Terms and conditions

- Guarantee only valid for products bought direct from Abcam or one of our authorized distributors