

## Product datasheet

# Rabbit Anti-Chicken IgY H&L (HRP) ab6753

[26 References](#) [3 Images](#)

### Overview

Product name	Rabbit Anti-Chicken IgY H&L (HRP)
Host species	Rabbit
Target species	Chicken
Tested applications	<b>Suitable for:</b> ICC/IF, Dot blot, ELISA, IHC-P, IHC-Fr, Immunomicroscopy, WB
Immunogen	chicken IgY whole molecule
Conjugation	HRP

### Properties

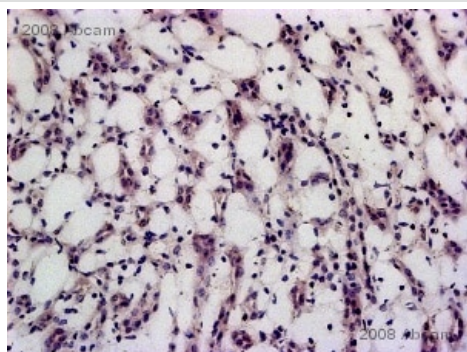
Form	Liquid
Storage instructions	Shipped at 4°C. Store at +4°C.
Storage buffer	pH: 6.50 Preservative: 0.01% Gentamicin sulphate Constituents: 0.42% Tripotassium orthophosphate, 0.87% Sodium chloride, 1% BSA
	Do not add Sodium Azide
Purity	Immunogen affinity purified
Purification notes	Horseradish Peroxidase (HRP).
Conjugation notes	This product was prepared from monospecific antiserum by immunoaffinity chromatography using chicken IgG coupled to agarose beads followed by solid phase adsorption(s) to remove any unwanted reactivities
Clonality	Polyclonal
Isotype	IgG
General notes	May cross-react with chicken IgM

### Applications

**The Abpromise guarantee** Our **Abpromise guarantee** covers the use of ab6753 in the following tested applications.  
The application notes include recommended starting dilutions; optimal dilutions/concentrations should be determined by the end user.

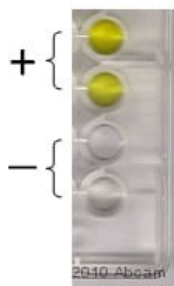
Application	Abreviews	Notes
ICC/IF		1/1000 - 1/5000.
Dot blot		Use at an assay dependent concentration.
ELISA		1/50000 - 1/100000.
IHC-P		Use at an assay dependent concentration.
IHC-Fr		Use at an assay dependent concentration.
Immunomicroscopy		Use at an assay dependent concentration.
WB		1/2500 - 1/10000.

## Images



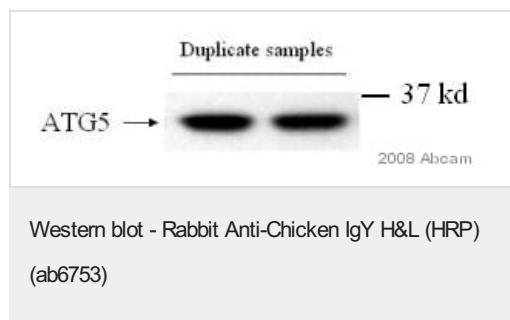
Immunohistochemistry (Frozen sections) - Rabbit  
Anti-Chicken IgY H&L (HRP) (ab6753)

Ab6753 was used at dilution 1/2000 with the primary antibody [\*\*ab16293\*\*](#) in IHC-Fr. See the review on [\*\*ab16293\*\*](#).



ELISA - Rabbit Anti-Chicken IgY H&L (HRP)  
(ab6753)

Ab6753 was used at dilution 1/10000 with the primary antibody [\*\*ab15879\*\*](#) in ELISA. See the review on [\*\*ab15879\*\*](#).



ab6753 was used at dilution 1/5000 with the primary antibody **ab19130** in WB. See the review on **ab19130**.

**Please note:** All products are "FOR RESEARCH USE ONLY. NOT FOR USE IN DIAGNOSTIC PROCEDURES"

### Our Abpromise to you: Quality guaranteed and expert technical support

---

- Replacement or refund for products not performing as stated on the datasheet
- Valid for 12 months from date of delivery
- Response to your inquiry within 24 hours
- We provide support in Chinese, English, French, German, Japanese and Spanish
- Extensive multi-media technical resources to help you
- We investigate all quality concerns to ensure our products perform to the highest standards

If the product does not perform as described on this datasheet, we will offer a refund or replacement. For full details of the Abpromise, please visit <https://www.abcam.com/abpromise> or contact our technical team.

### Terms and conditions

---

- Guarantee only valid for products bought direct from Abcam or one of our authorized distributors