

Product datasheet

Rabbit monoclonal [H19-5] Anti-Human kappa light chain ab125919

Recombinant RabMAb

[2 References](#) [6 Images](#)

Overview

Product name	Rabbit monoclonal [H19-5] Anti-Human kappa light chain
Host species	Rabbit
Target species	Human
Tested applications	Suitable for: WB, ELISA
Immunogen	Other Immunogen Type corresponding to Human Kappa light chain.

Properties

Form	Liquid
Storage instructions	Shipped at 4°C. Store at +4°C short term (1-2 weeks). Upon delivery aliquot. Store at -20°C or -80°C. Avoid freeze / thaw cycle.
Storage buffer	pH: 7.2 Preservative: 0.01% Sodium azide Constituents: 0.05% BSA, 99% PBS
Purity	Protein A purified
Clonality	Monoclonal
Clone number	H19-5
Isotype	IgG
General notes	<p>Mouse, Rat: We have preliminary internal testing data to indicate this antibody may not react with these species. Please contact us for more information.</p> <p>This product is a recombinant monoclonal antibody, which offers several advantages including:</p> <ul style="list-style-type: none">- High batch-to-batch consistency and reproducibility- Improved sensitivity and specificity- Long-term security of supply- Animal-free production <p>For more information see here.</p> <p>Our RabMAb[®] technology is a patented hybridoma-based technology for making rabbit monoclonal antibodies. For details on our patents, please refer to RabMAb[®] patents.</p>

We are constantly working hard to ensure we provide our customers with best in class antibodies. As a result of this work we are pleased to now offer this antibody in purified format. We are in the process of updating our datasheets. The purified format is designated 'PUR' on our product labels. If you have any questions regarding this update, please contact our Scientific Support team.

Applications

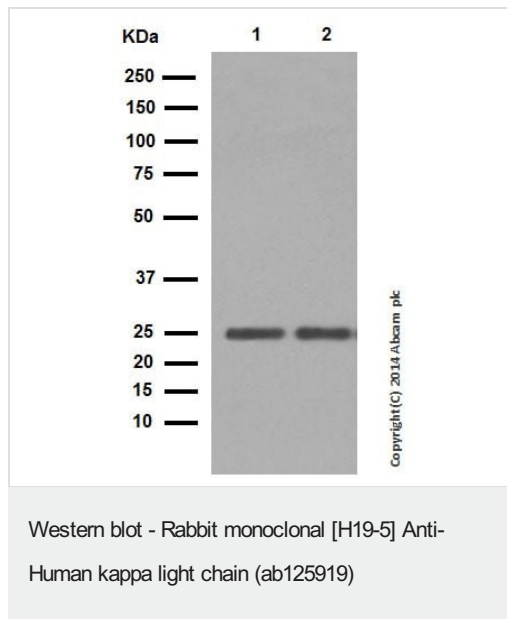
The Abpromise guarantee

Our **Abpromise guarantee** covers the use of ab125919 in the following tested applications.

The application notes include recommended starting dilutions; optimal dilutions/concentrations should be determined by the end user.

Application	Abreviews	Notes
WB		1/5000. For unpurified use at 1/1000 - 1/10000.
ELISA		Use a concentration of 1 µg/ml. For unpurified use at 1/1000 - 1/10000.

Images



All lanes : Rabbit monoclonal [H19-5] Anti-Human kappa light chain (ab125919) at 1/5000 dilution

Lane 1 : Human spleen tissue lysate

Lane 2 : Human thymus tissue lysate

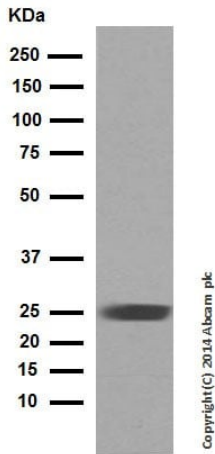
Lysates/proteins at 20 µg per lane.

Secondary

All lanes : Anti-Rabbit IgG (HRP), specific to the non-reduced form of IgG at 1/1000 dilution

Observed band size: 25 kDa

Blocking and diluting buffer: 5% NFDm/TBST.



Western blot - Rabbit monoclonal [H19-5] Anti-Human kappa light chain (ab125919)

Rabbit monoclonal [H19-5] Anti-Human kappa light chain (ab125919) at 1/5000 dilution (purified) + Human tonsil tissue lysate at 20 µg

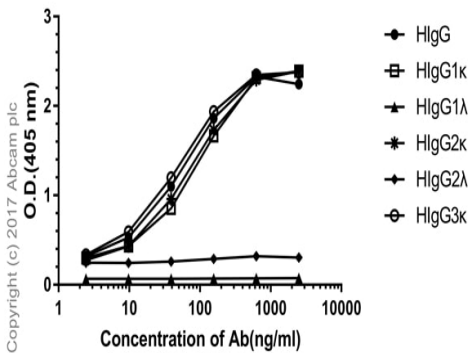
Secondary

Anti-Rabbit IgG (HRP), specific to the non-reduced form of IgG at 1/1000 dilution

Observed band size: 25 kDa

Blocking and diluting buffer: 5% NFDM/TBST.

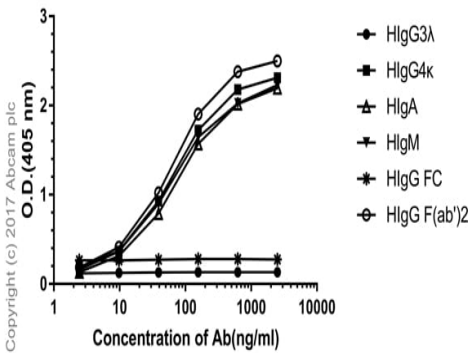
Direct ELISA antibody dose-response curve



ELISA - Rabbit monoclonal [H19-5] Anti-Human kappa light chain (ab125919)

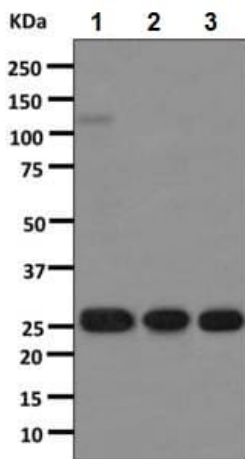
Direct ELISA antibody dose-response curve using ab125919 between 0-2500 ng/ml. Antigen concentration of 1000 ng/mL. An alkaline phosphatase-conjugated goat anti-rabbit IgG (H+L) (1/2500) was used as the secondary antibody.

Direct ELISA antibody dose-response curve



ELISA - Rabbit monoclonal [H19-5] Anti-Human kappa light chain (ab125919)

Direct ELISA antibody dose-response curve using ab125919 between 0-2500 ng/ml. Antigen concentration of 1000 ng/mL. An alkaline phosphatase-conjugated goat anti-rabbit IgG (H+L) (1/2500) was used as the secondary antibody.



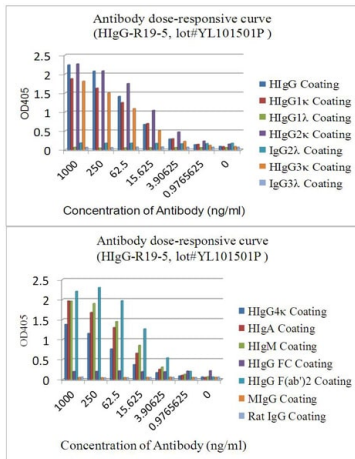
Western blot - Rabbit monoclonal [H19-5] Anti-Human kappa light chain (ab125919)

All lanes : Rabbit monoclonal [H19-5] Anti-Human kappa light chain (ab125919) (unpurified)

Lane 1 : Human spleen tissue lysate

Lane 2 : Human thymus tissue lysate

Lane 3 : Human tonsil tissue lysate



ELISA - Rabbit monoclonal [H19-5] Anti-Human kappa light chain (ab125919)

ELISA dose-responsive curve using purified ab125919 at a range of concentrations.

Antigen concentration: 1000ng/ml.

Secondary antibody: Alkaline Phosphatase-conjugated AffiniPure Goat Anti-Rabbit IgG (H+L), 1/2500.

Please note: All products are "FOR RESEARCH USE ONLY. NOT FOR USE IN DIAGNOSTIC PROCEDURES"

Our Abpromise to you: Quality guaranteed and expert technical support

- Replacement or refund for products not performing as stated on the datasheet
- Valid for 12 months from date of delivery
- Response to your inquiry within 24 hours
- We provide support in Chinese, English, French, German, Japanese and Spanish
- Extensive multi-media technical resources to help you
- We investigate all quality concerns to ensure our products perform to the highest standards

If the product does not perform as described on this datasheet, we will offer a refund or replacement. For full details of the Abpromise, please visit <https://www.abcam.com/abpromise> or contact our technical team.

Terms and conditions

- Guarantee only valid for products bought direct from Abcam or one of our authorized distributors